

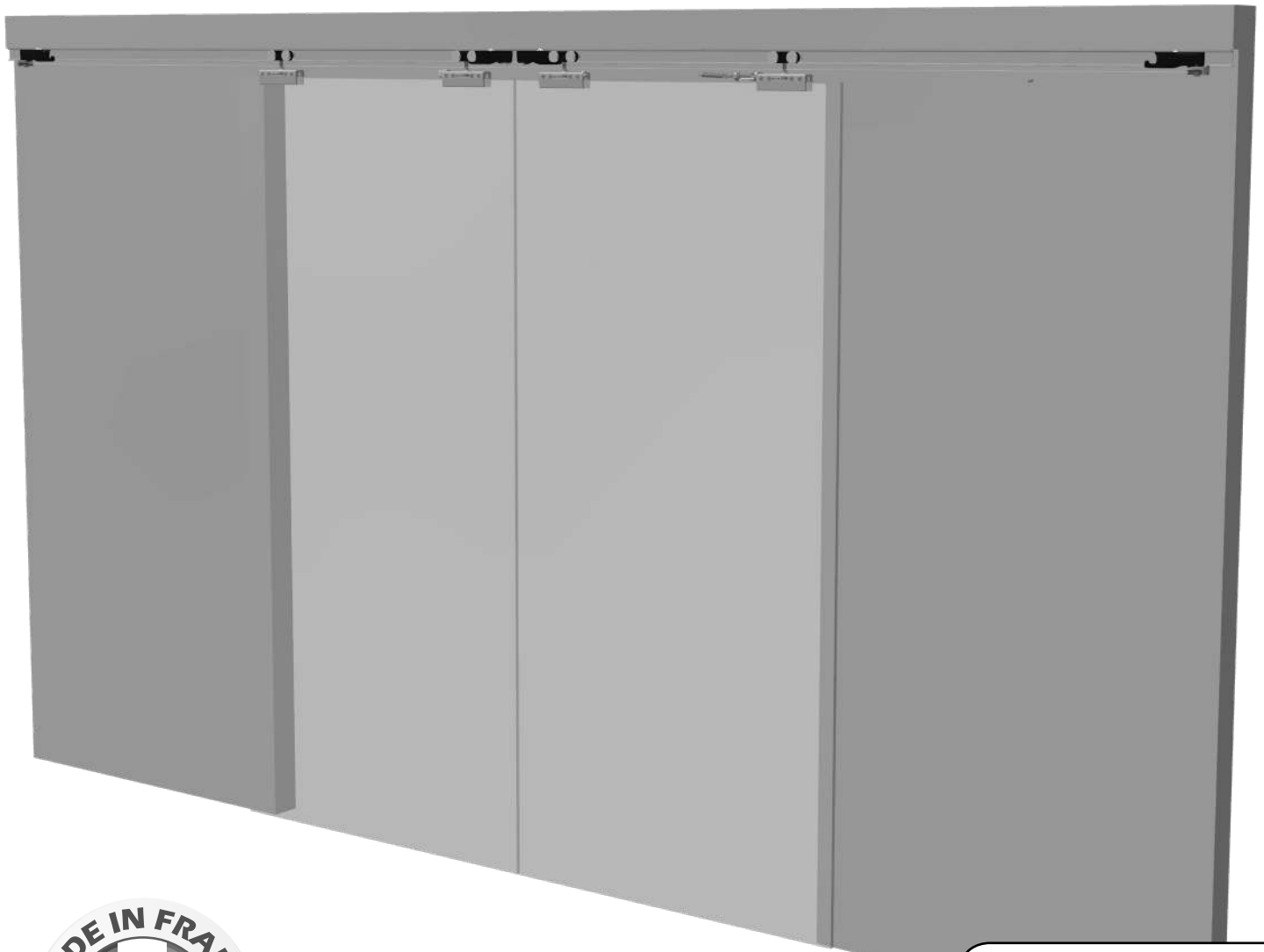
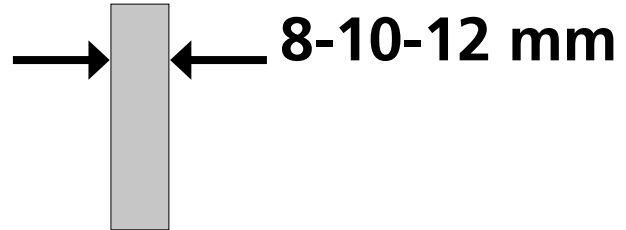


INSTRUCTION DE MONTAGE
MONTAGEANLEITUNG
INSTRUCTIONS FOR ASSEMBLY
INSTRUCCIONES DE MONTAJE

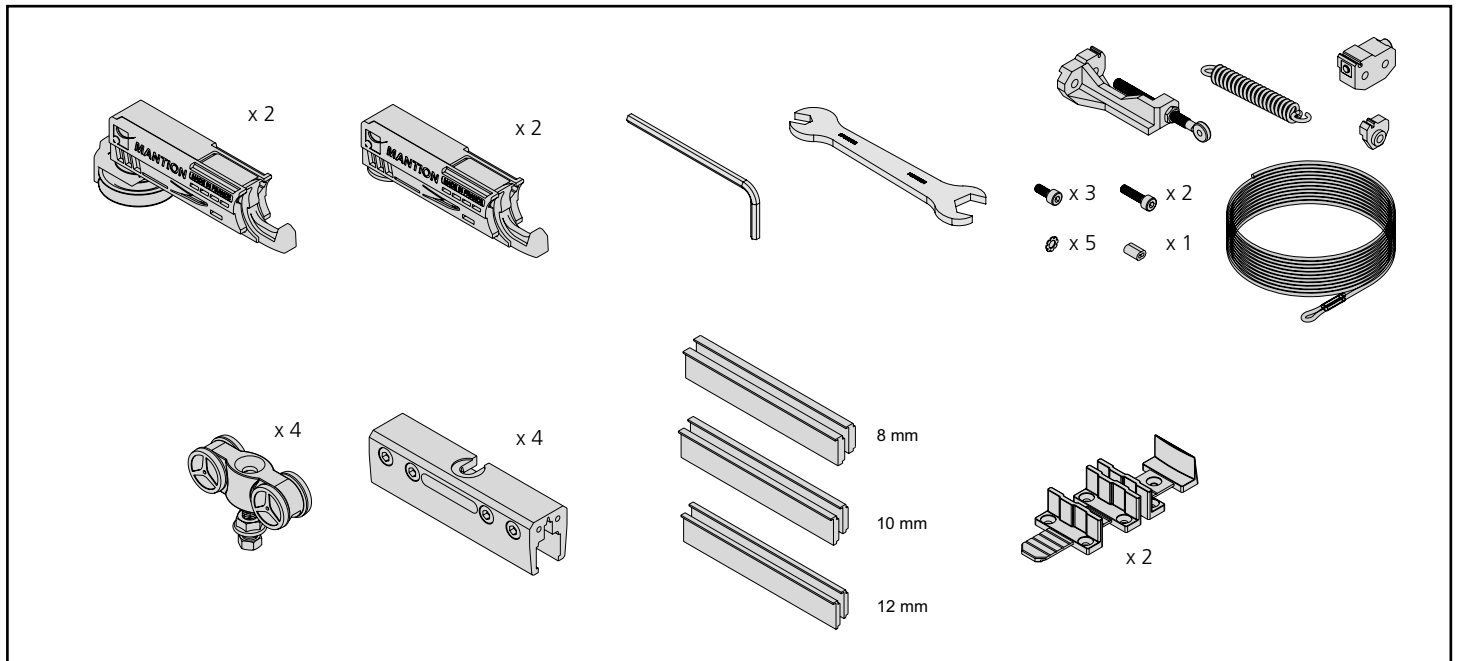
MAGLASS

NM_MAGLA_010

PORTE D'INTÉRIEUR / INNENTÜR / INTERIOR DOOR / PUERTA DE INTERIOR
2 x 70 KG Max



COMPOSITION - ZUSAMMENSETZUNG - COMPOSICIÓN

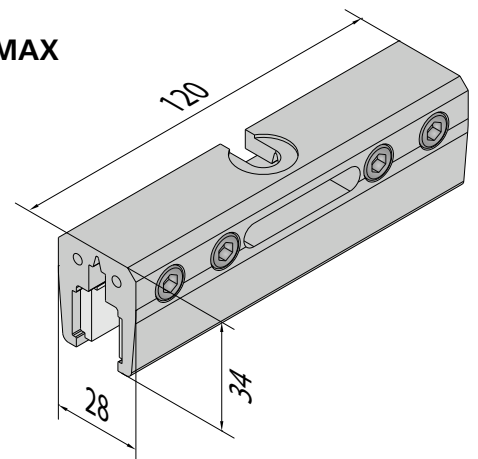
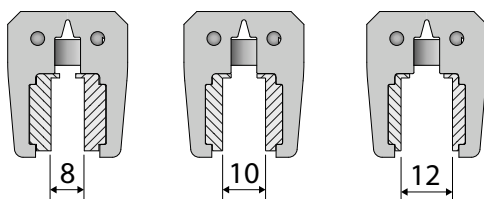


CONDITIONS DE POSE / MONTAGEBEDINGUNGEN / INSTALLATION REQUIREMENTS / CONDICIONES DE COLOCACION:

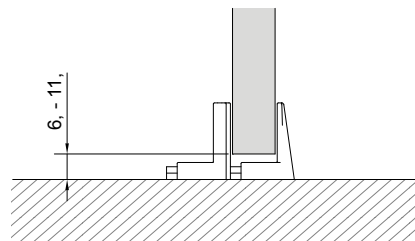
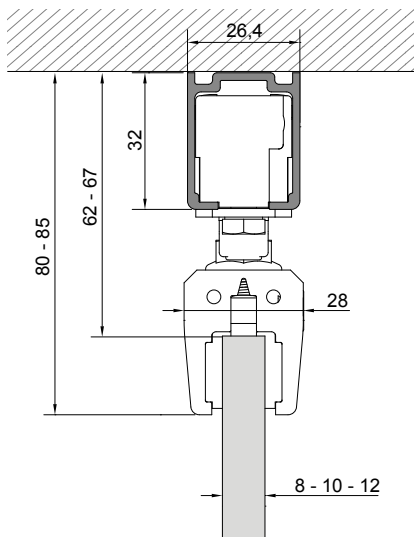
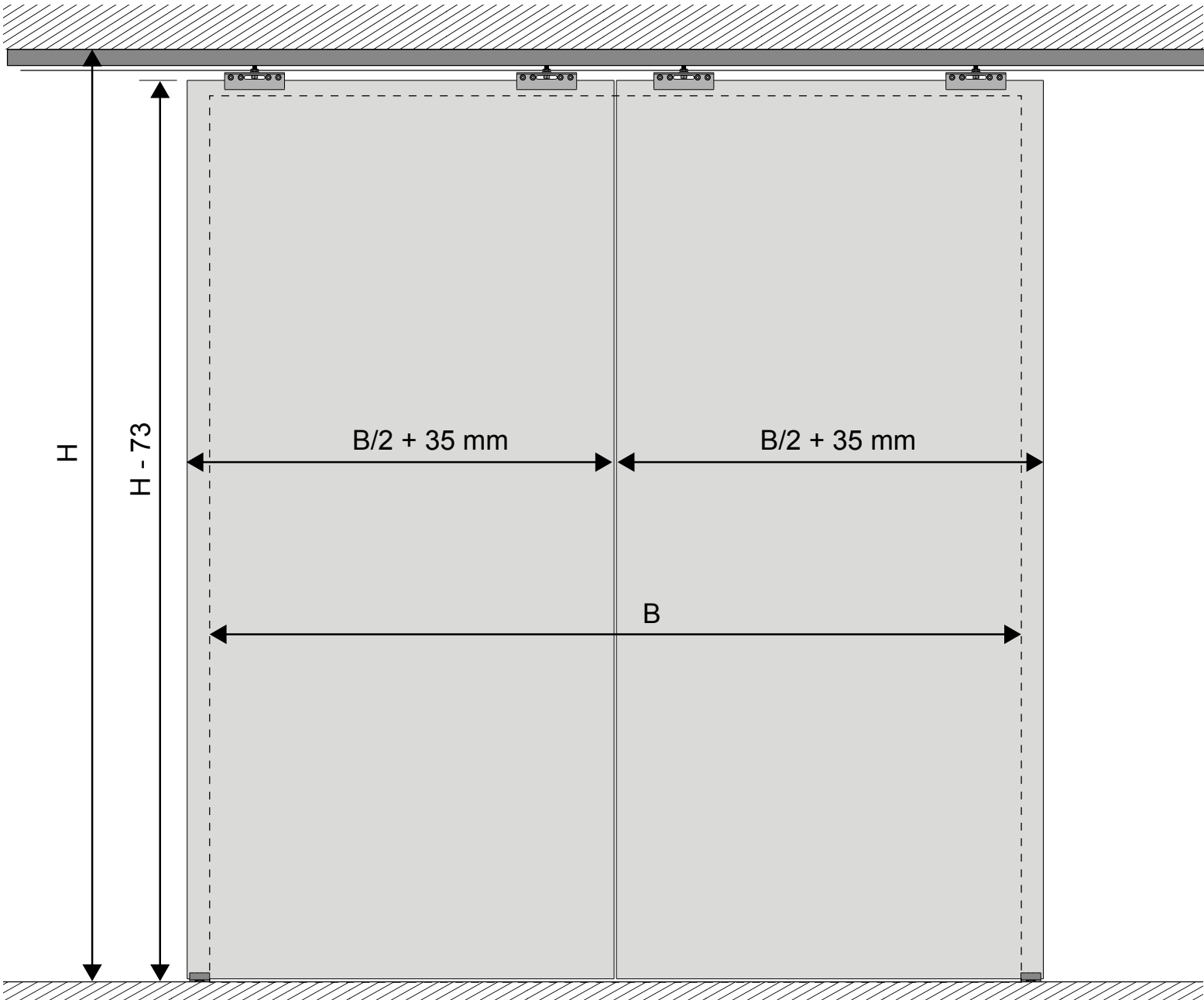
- Produit destiné à une utilisation en intérieur / Dieses Produkt ist nur für Innenanwendung geeignet / For indoor use only / Producto para utilización en interior
- Ne pas installer dans des endroits humides / Nicht in feuchten Atmosphären verwenden / Do not install in humid places / No instalar en lugares húmedos
- Le montage doit être effectué par des monteurs qualifiés / Die Montage muss von qualifizierten Handwerkern geführt werden / Installation must be performed by skilled personnel / el montaje tiene que hacerse por instaladores cualificados

DIMENSIONS / MASSE / SIZING / DIMENSIONES (mm):

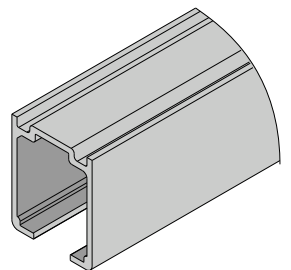
- Epaisseur panneau / Paneelstärke / Panel thickness / Grueso del panel: **8-10-12 mm**
- Poids panneau / Paneelgewicht / Panel weight / Peso panel: **70 Kg MAX**



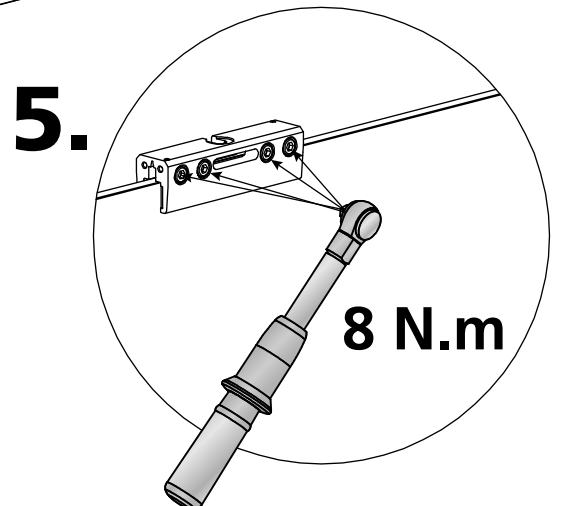
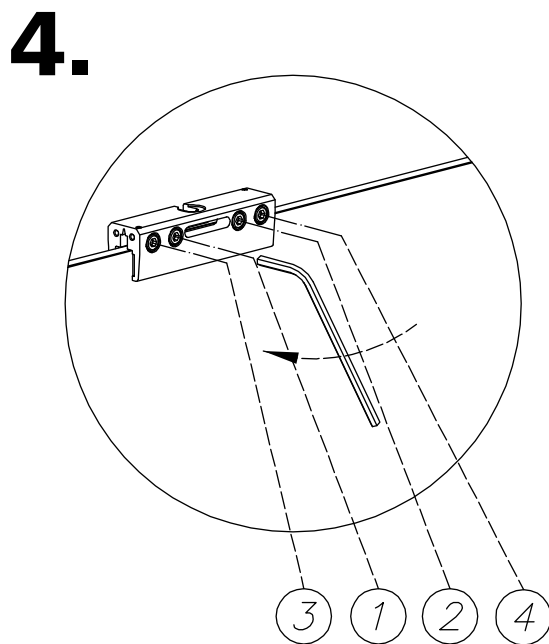
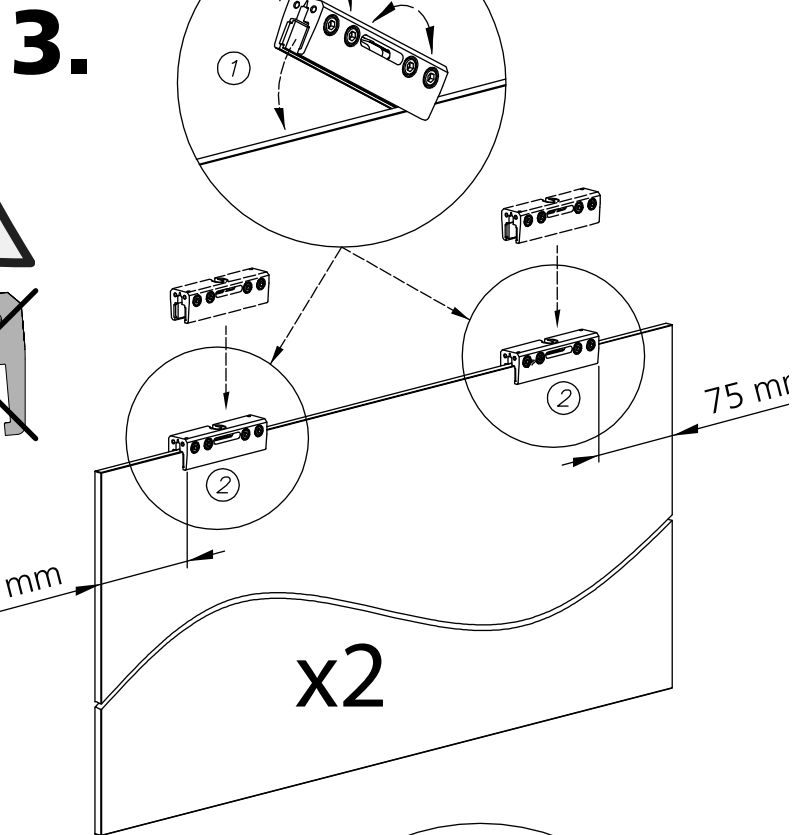
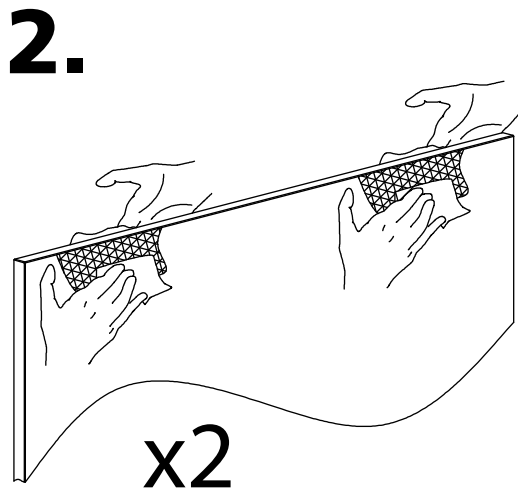
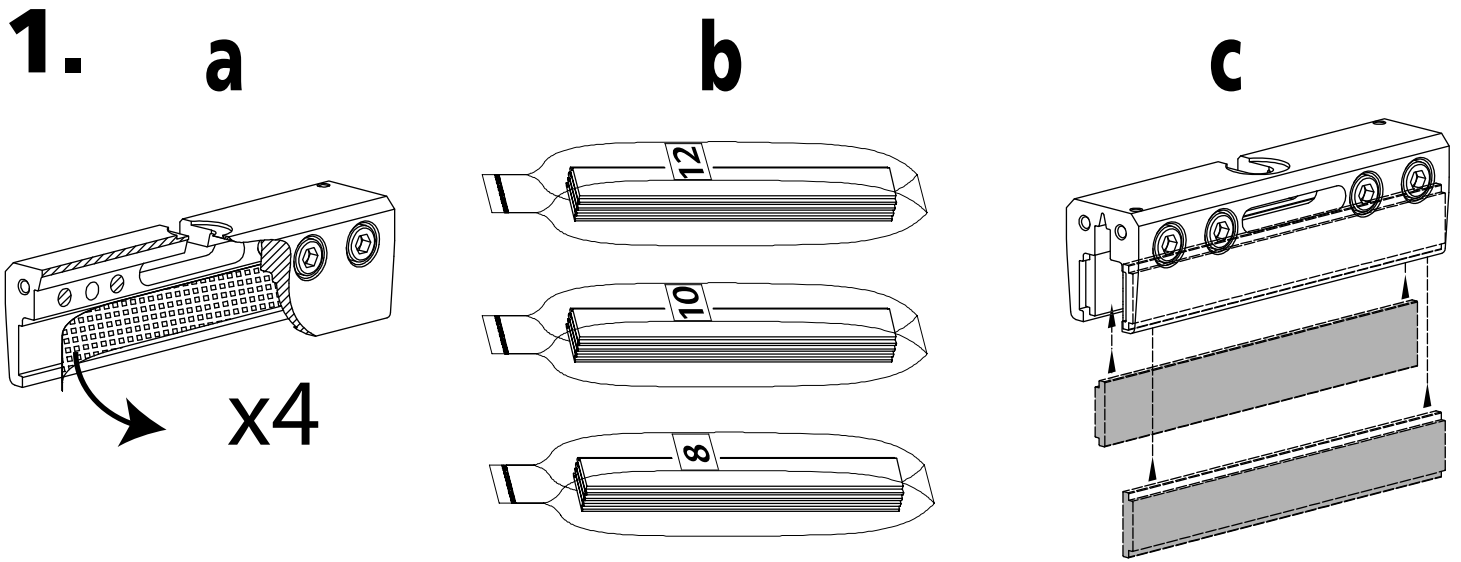
ENCOMBREMENT - ABMESSUNGEN - DIMENSIONS - VOLUMEN



Longueur du rail
Length of the track
Länge der Schiene
Longitud del perfil

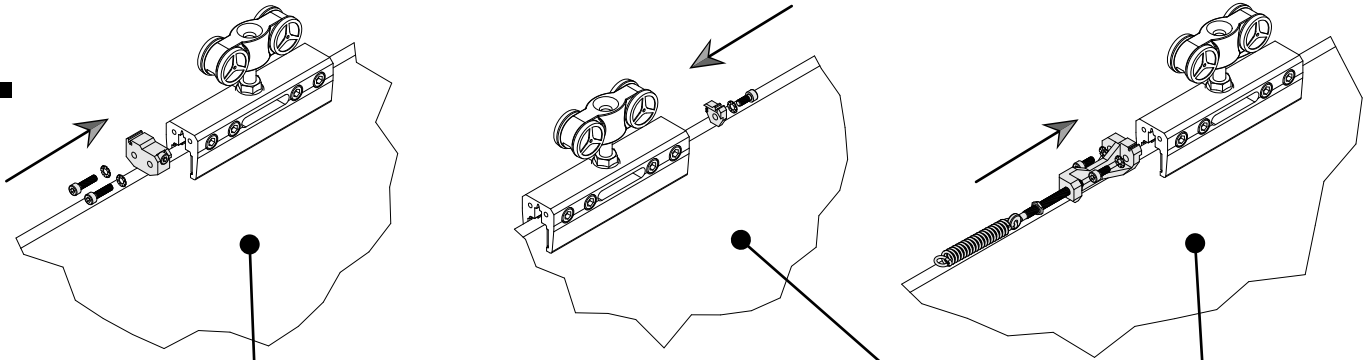


$$L = (2 \times B) + 100 \text{ mm}$$

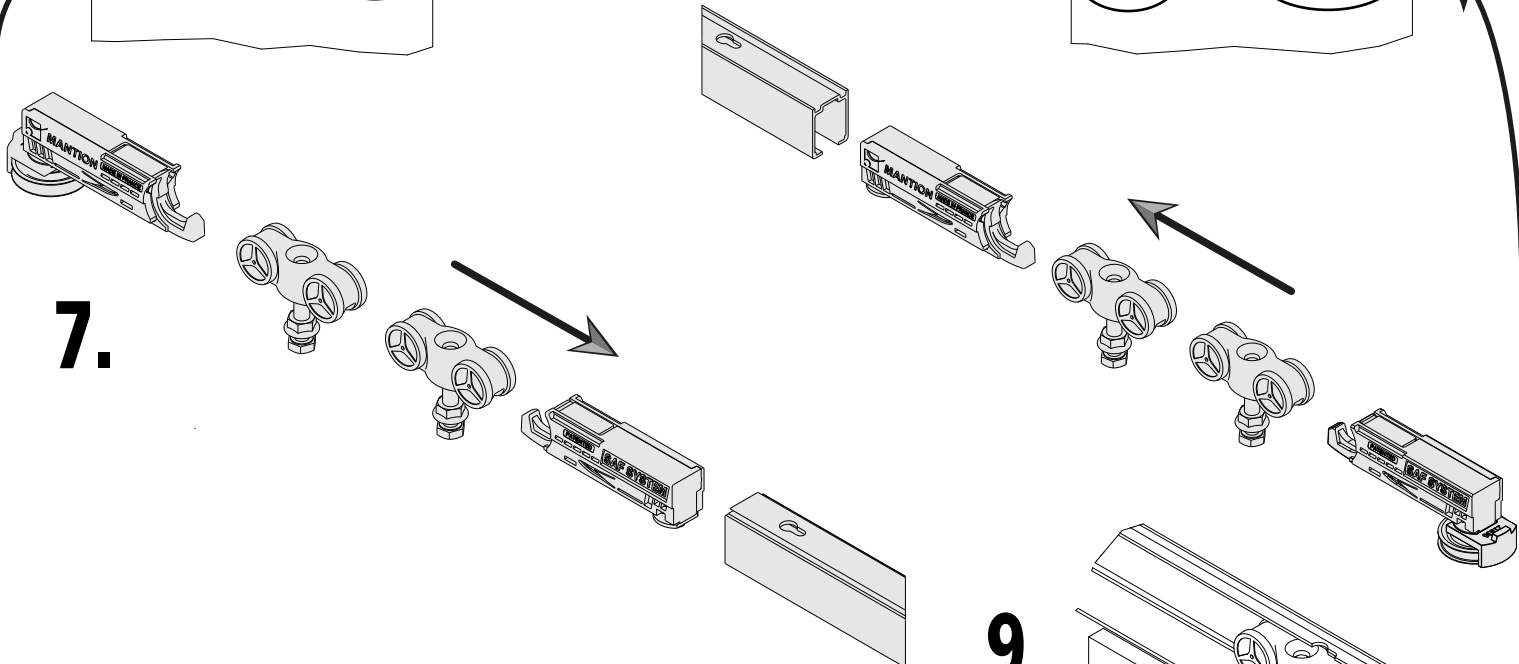


INSTALLATION / MONTAGE / ASSEMBLY / MONTAJE

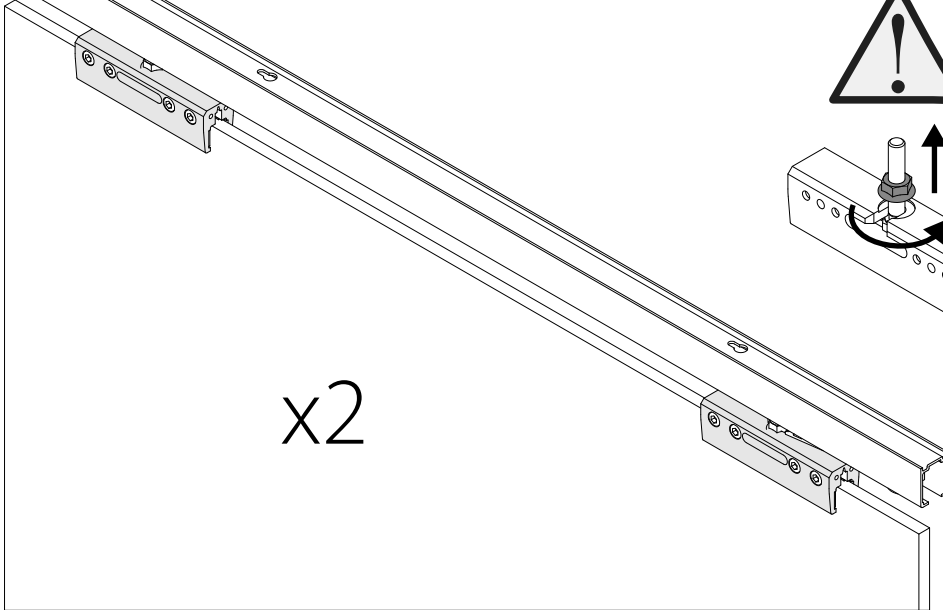
6.



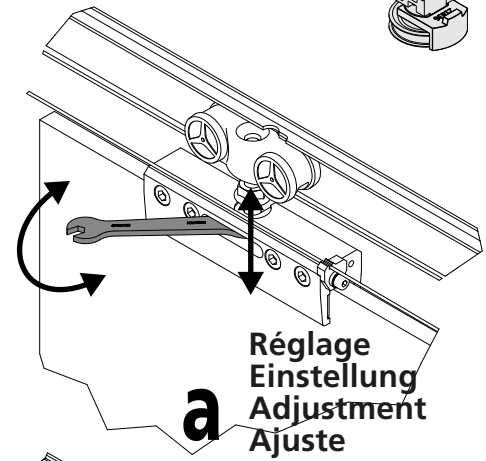
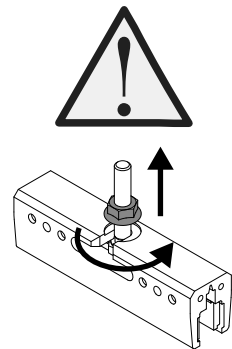
7.



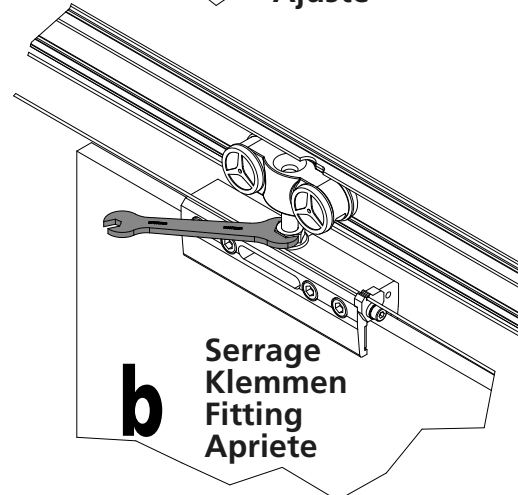
8.



9.



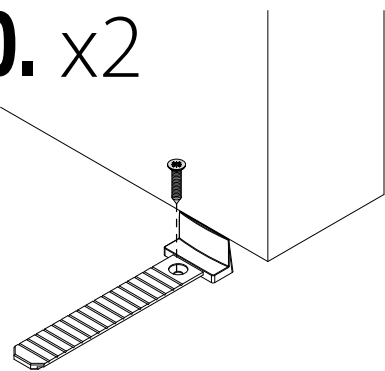
Réglage
Einstellung
Adjustment
Ajuste



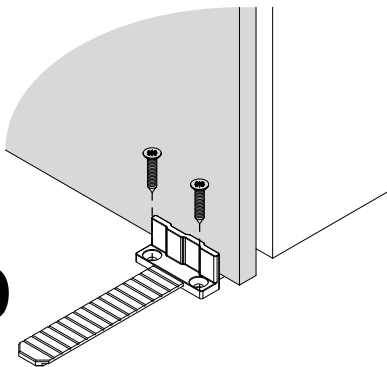
Serrage
Klemmen
Fitting
Apriete

10. x2

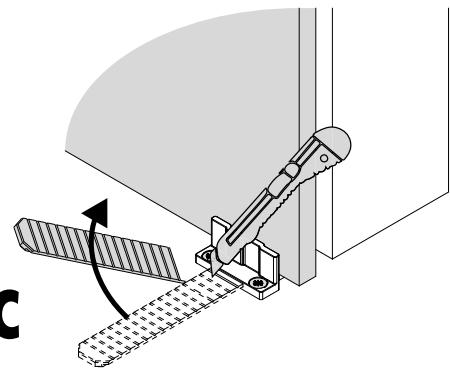
a



b

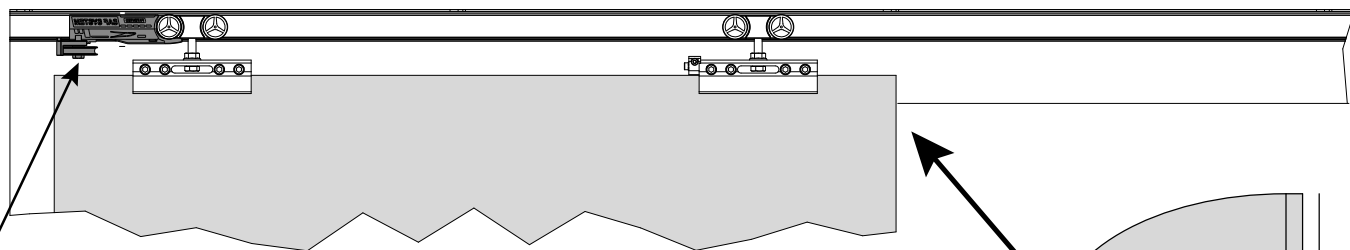


c

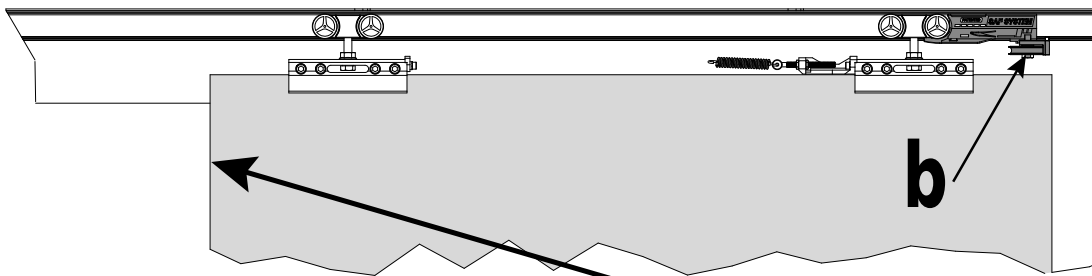


11.

a

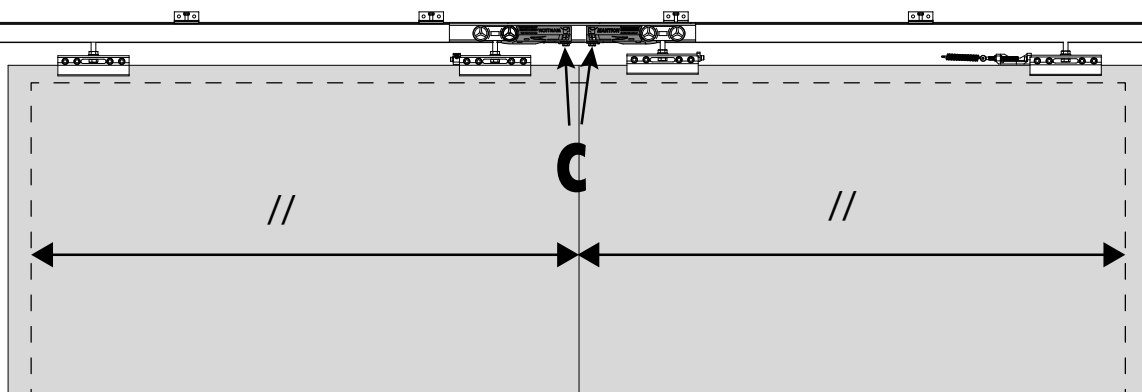


b



- | | |
|----------|---------|
| a | Serrage |
| b | Klemmen |
| | Fitting |
| c | Apriete |

c



INSTALLATION / MONTAGE / ASSEMBLY / MONTAJE

