

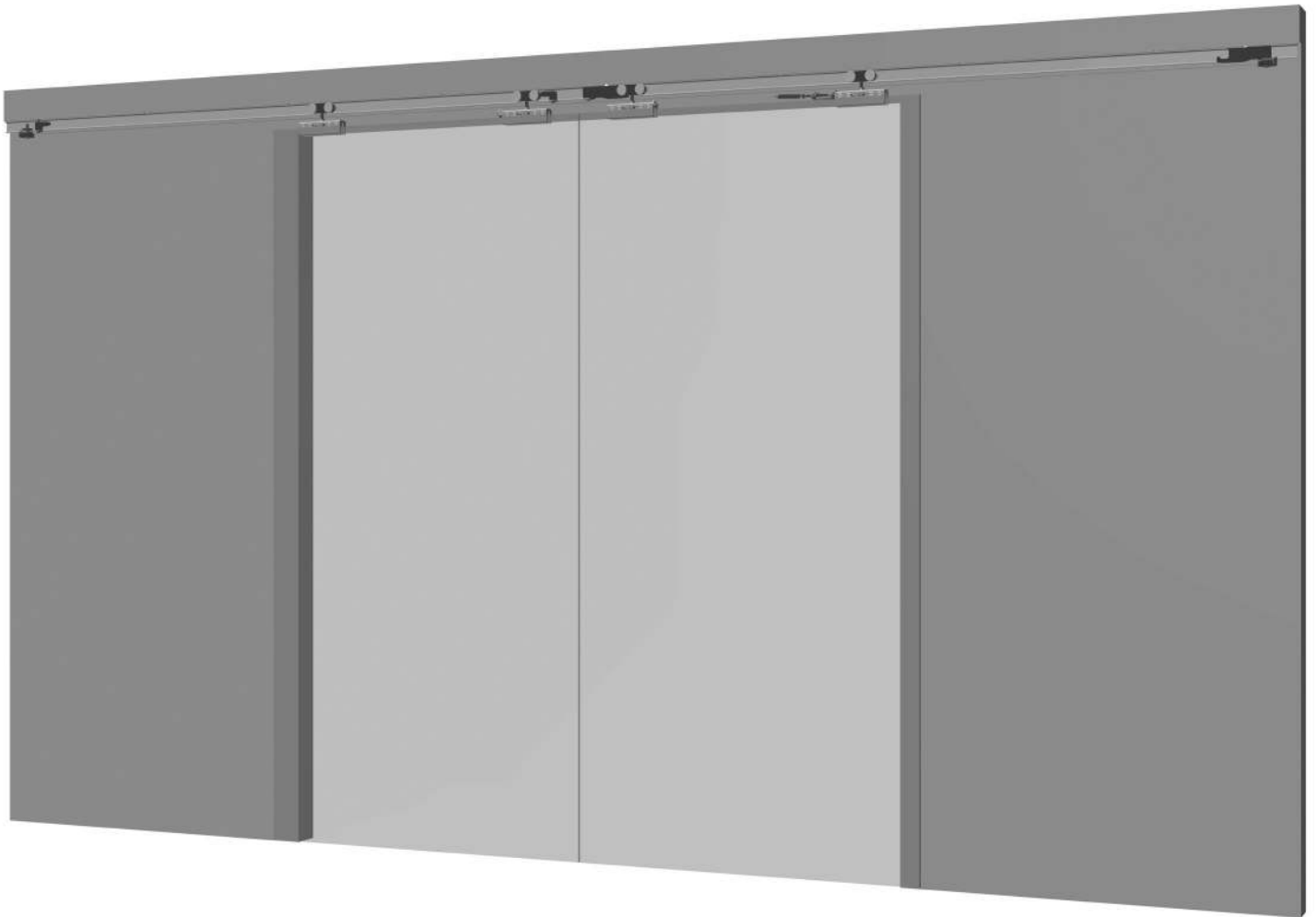
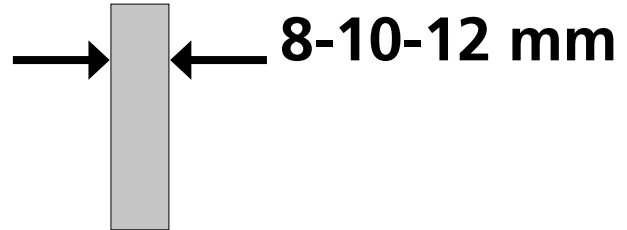


INSTRUCTION DE MONTAGE  
MONTAGEANLEITUNG  
INSTRUCTIONS FOR ASSEMBLY  
INSTRUCCIONES DE MONTAJE

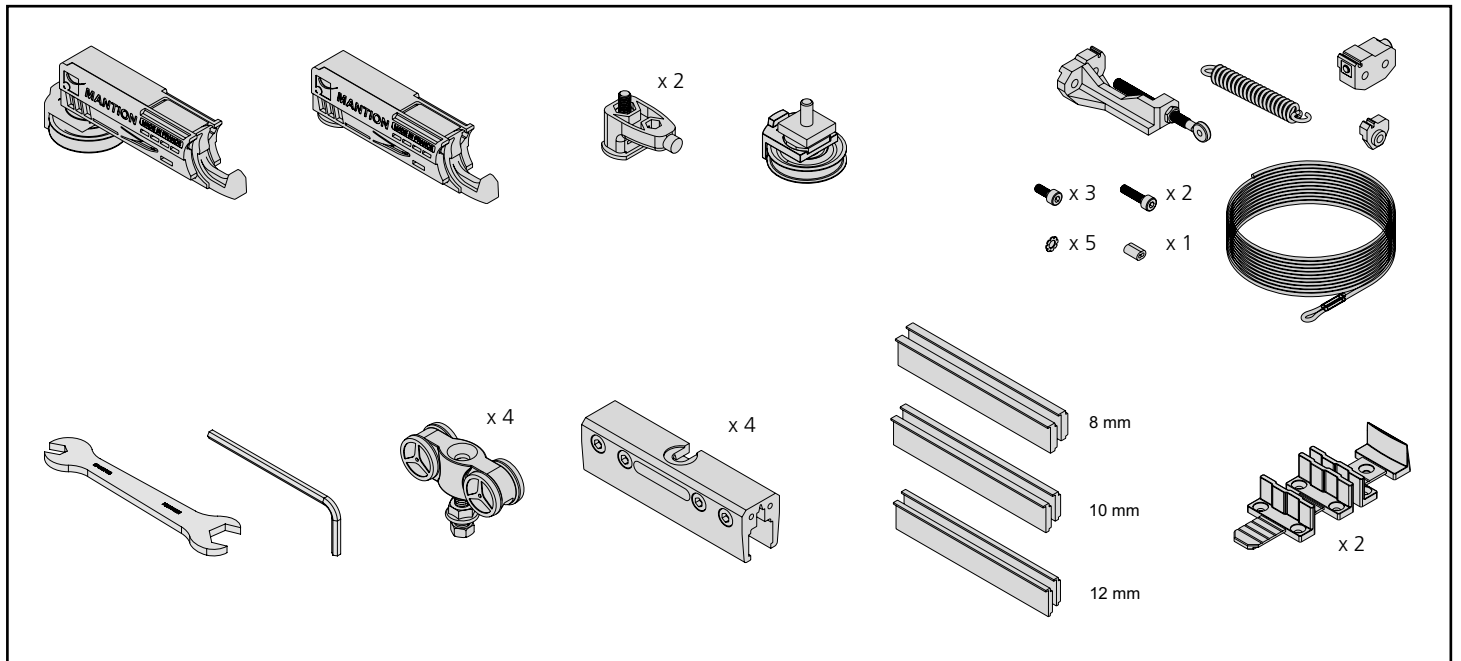
# MAGLASS

## NM\_MAGLA\_008

PORTE D'INTÉRIEUR / INNENTÜR / INTERIOR DOOR / PUERTA DE INTERIOR  
**2 x 30 KG Max**



# COMPOSITION - ZUSAMMENSETZUNG - COMPOSICIÓN

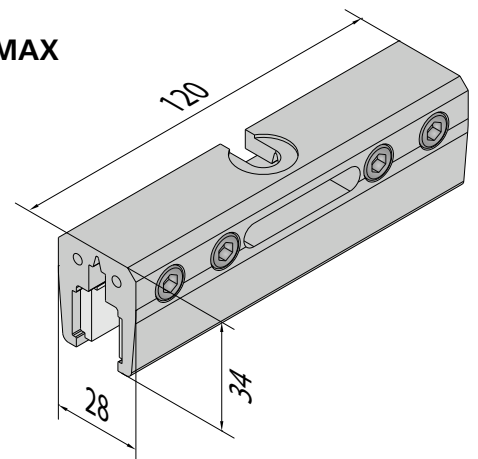
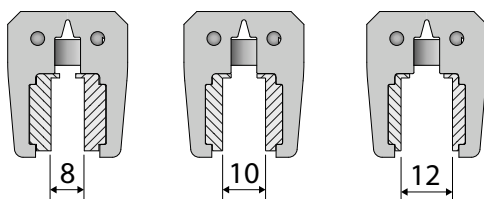


## CONDITIONS DE POSE / MONTAGEBEDINGUNGEN / INSTALLATION REQUIREMENTS / CONDICIONES DE COLOCACION:

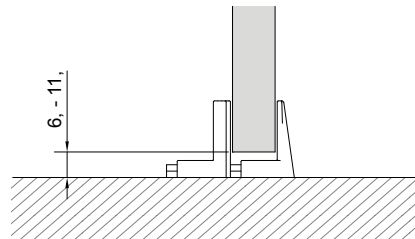
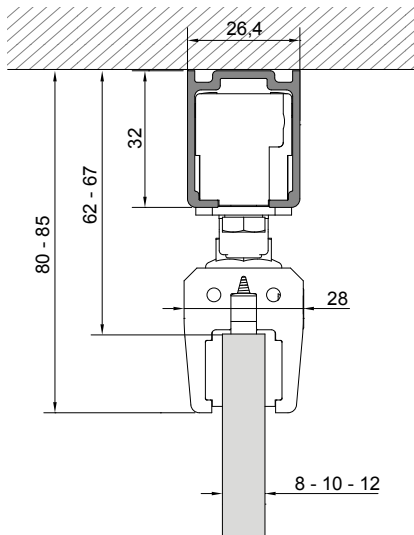
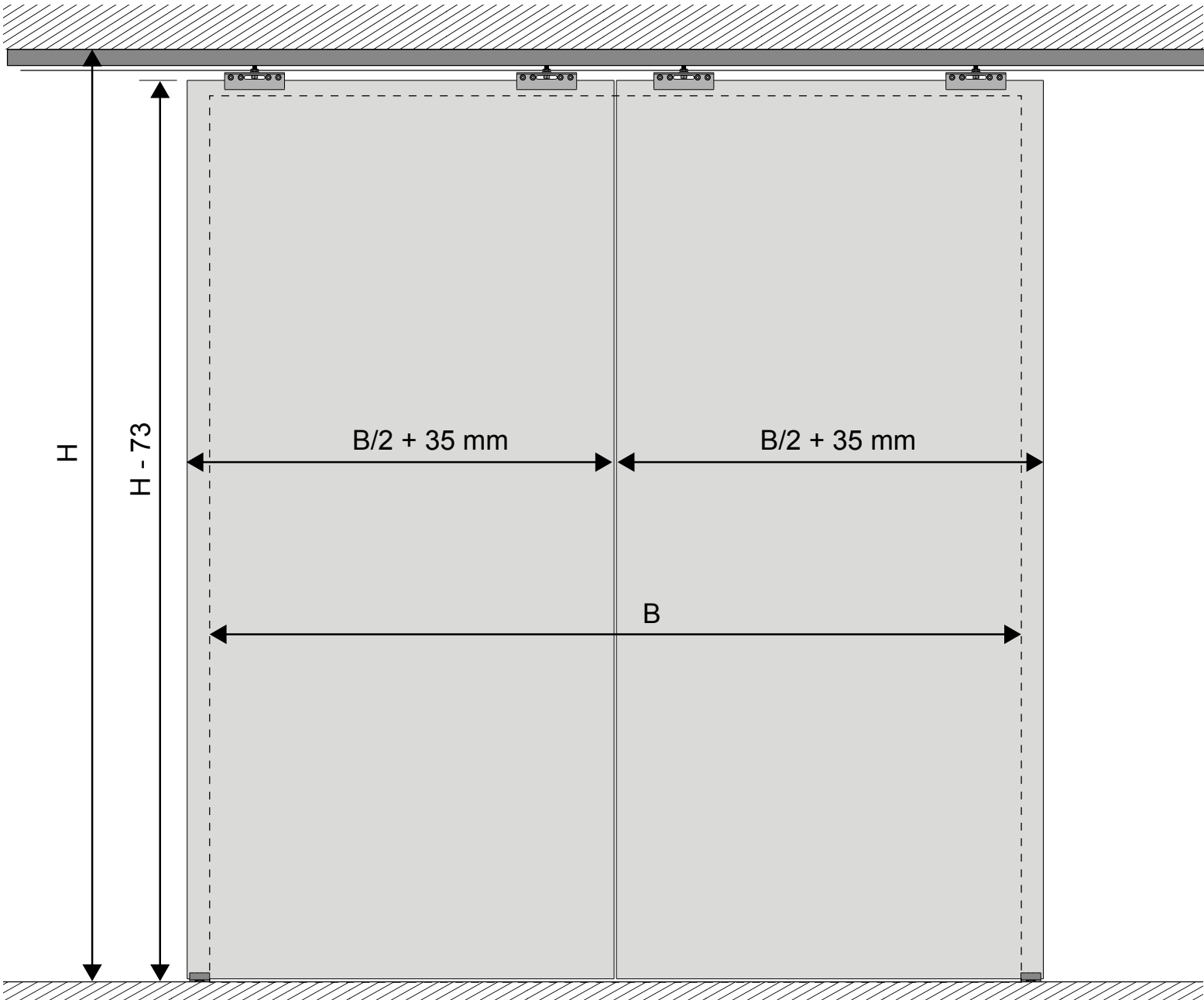
- Produit destiné à une utilisation en intérieur / Dieses Produkt ist nur für Innenanwendung geeignet / For indoor use only / Producto para utilización en interior
- Ne pas installer dans des endroits humides / Nicht in feuchten Atmosphären verwenden / Do not install in humid places / No instalar en lugares húmedos
- Le montage doit être effectué par des monteurs qualifiés / Die Montage muss von qualifizierten Handwerkern geführt werden / Installation must be performed by skilled personnel / el montaje tiene que hacerse por instaladores cualificados

## DIMENSIONS / MASSE / SIZING / DIMENSIONES (mm):

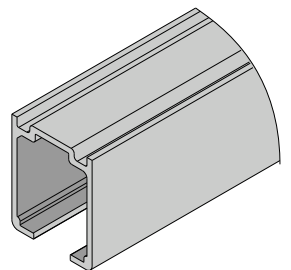
- Epaisseur panneau / Paneelstärke / Panel thickness / Grueso del panel: **8-10-12 mm**
- Poids panneau / Paneelgewicht / Panel weight / Peso panel: **30 Kg MAX**



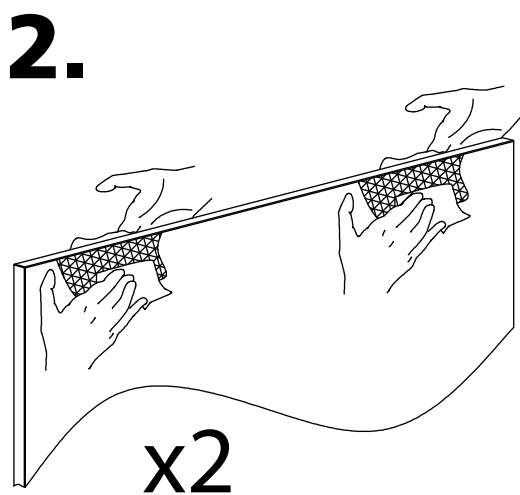
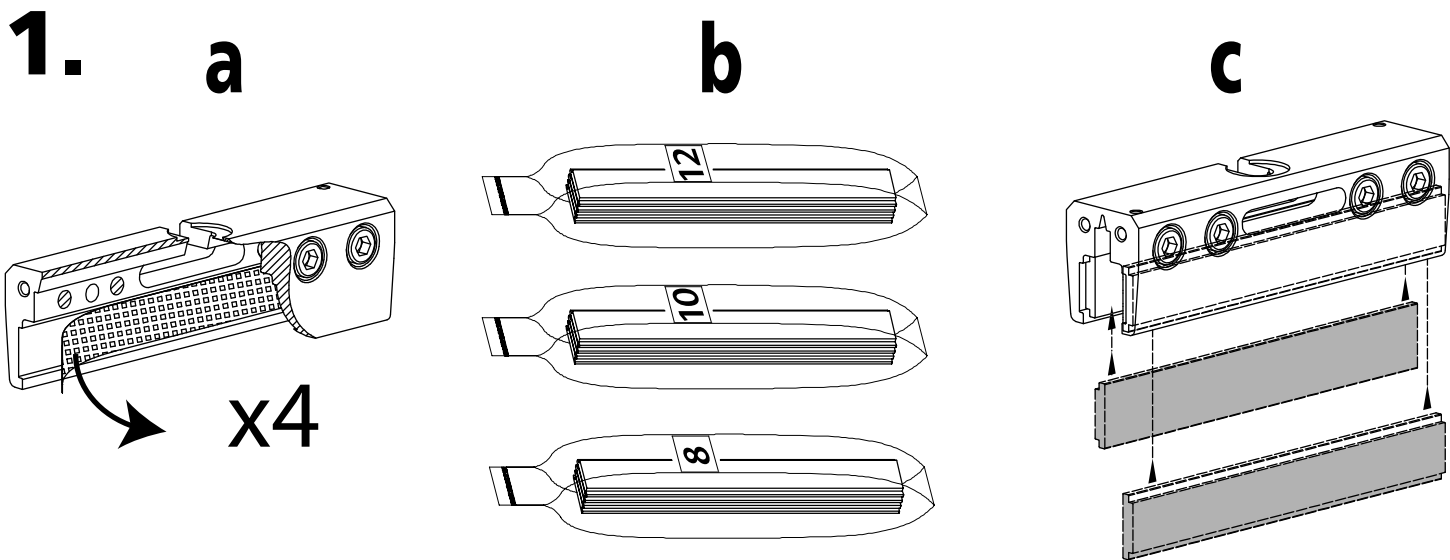
# ENCOMBREMENT - ABMESSUNGEN - DIMENSIONS - VOLUMEN



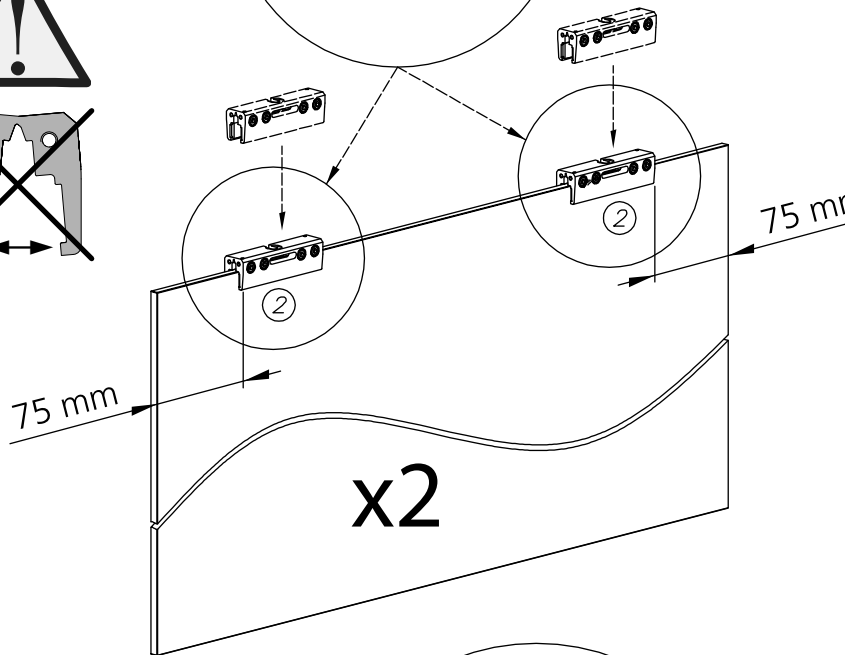
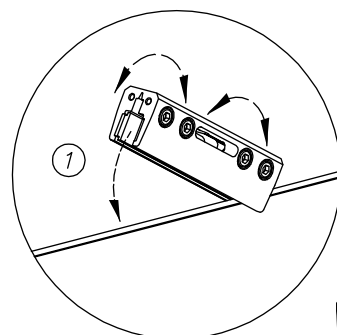
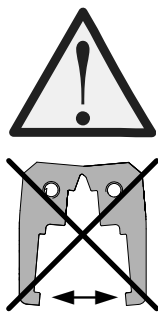
Longueur du rail  
Length of the track  
Länge der Schiene  
Longitud del perfil



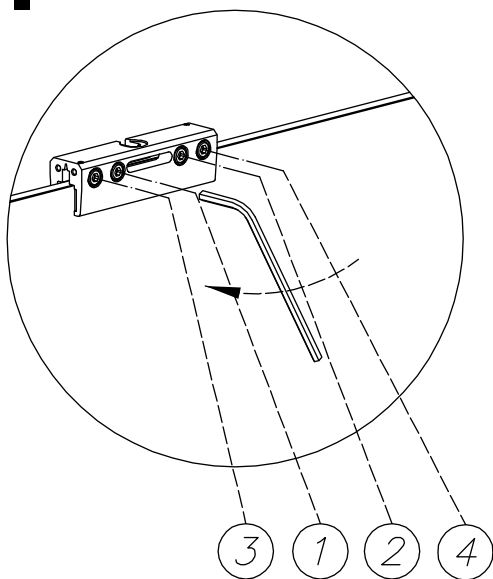
$$L = (2 \times B) + 100 \text{ mm}$$



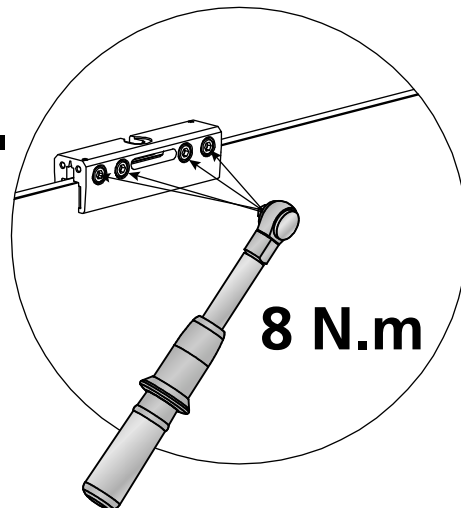
**3.**



**4.**

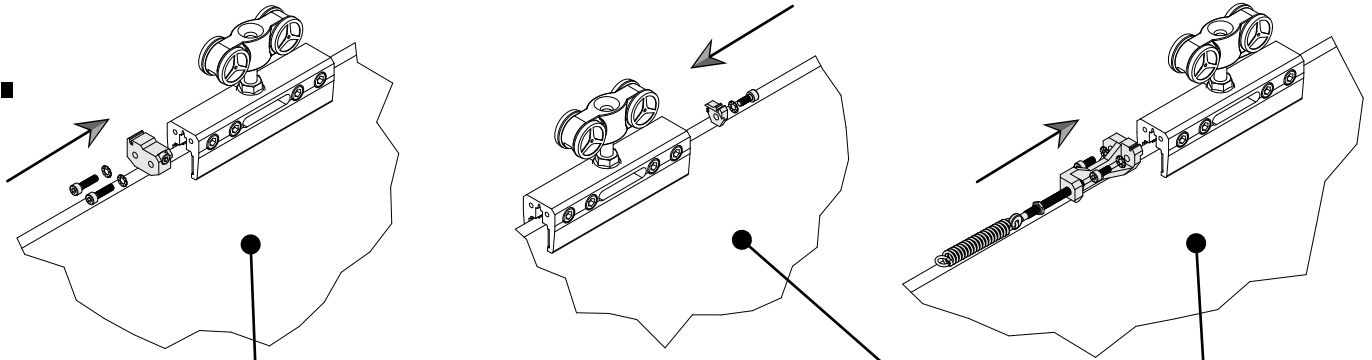


**5.**

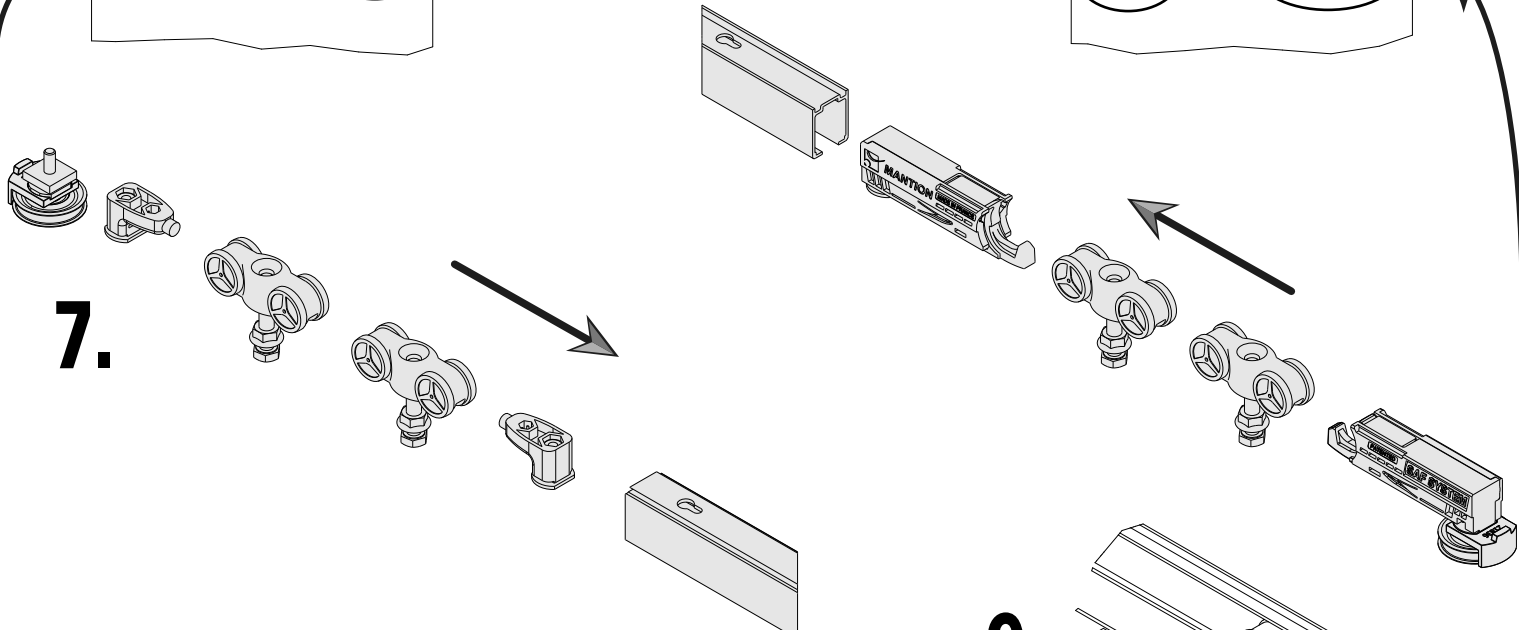


# INSTALLATION / MONTAGE / ASSEMBLY / MONTAJE

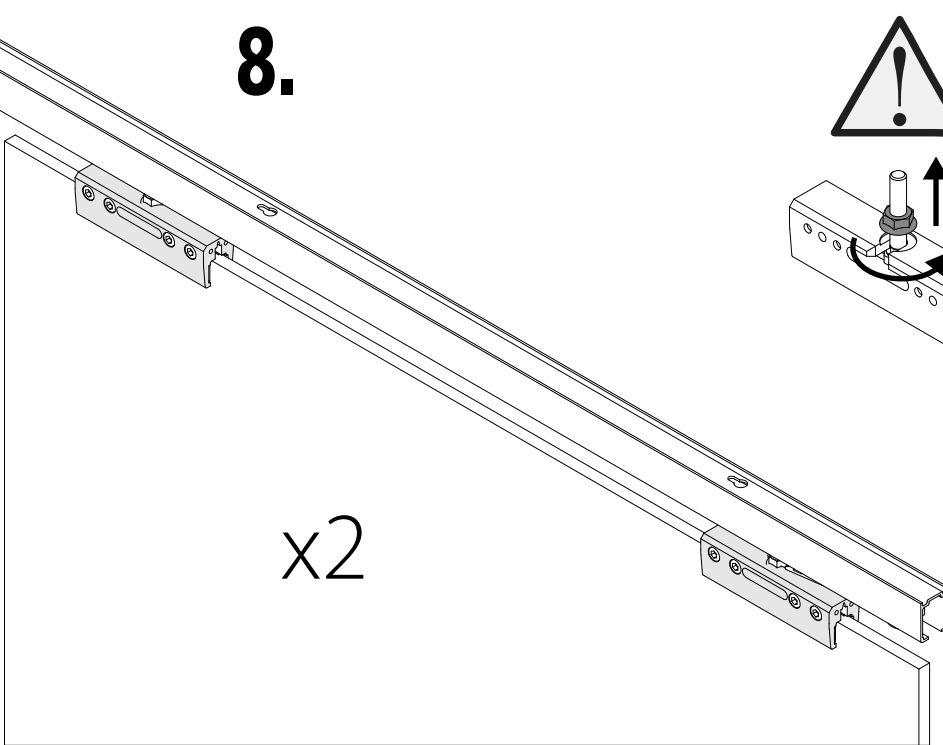
6.



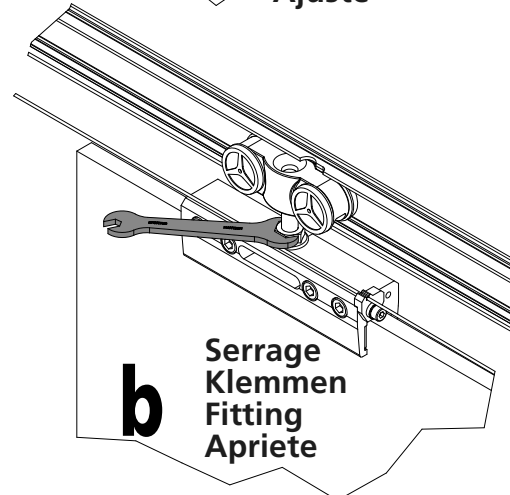
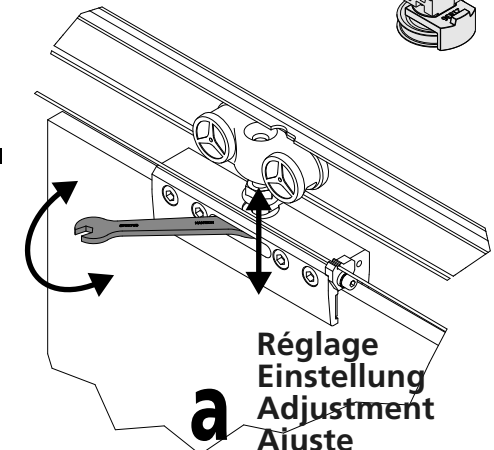
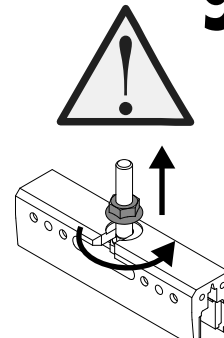
7.



8.

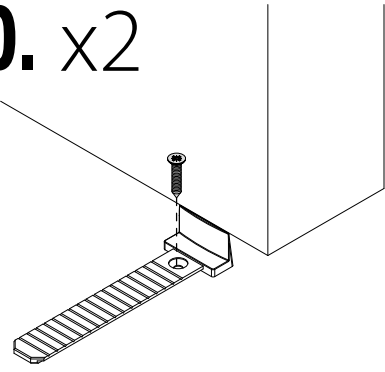


9.

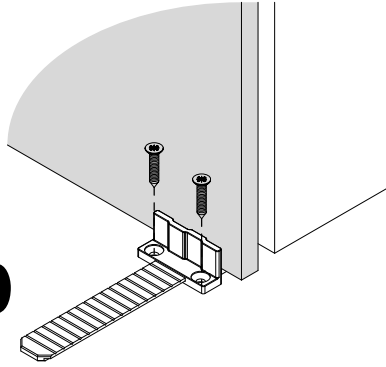


10. x2

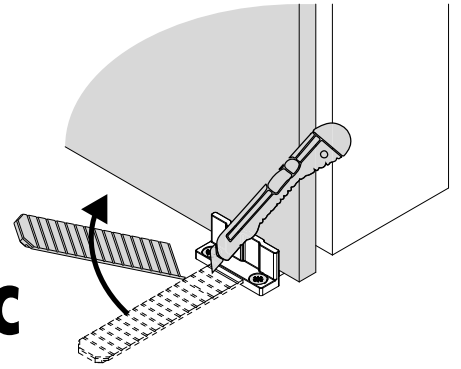
**a**



**b**

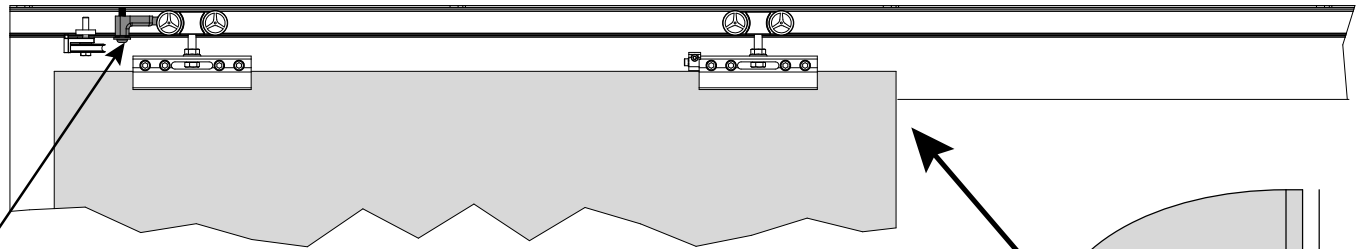


**c**

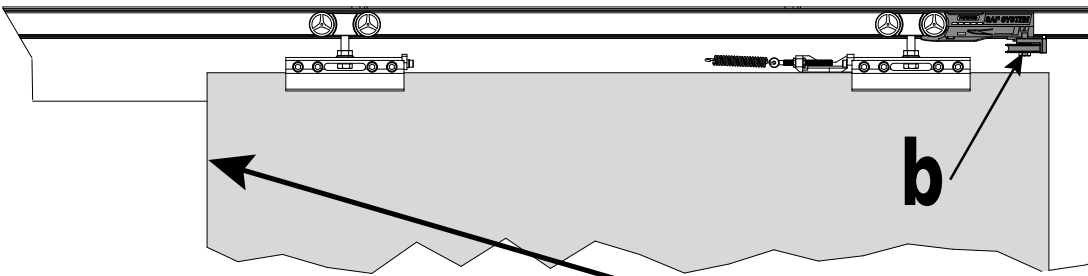


11.

**a**

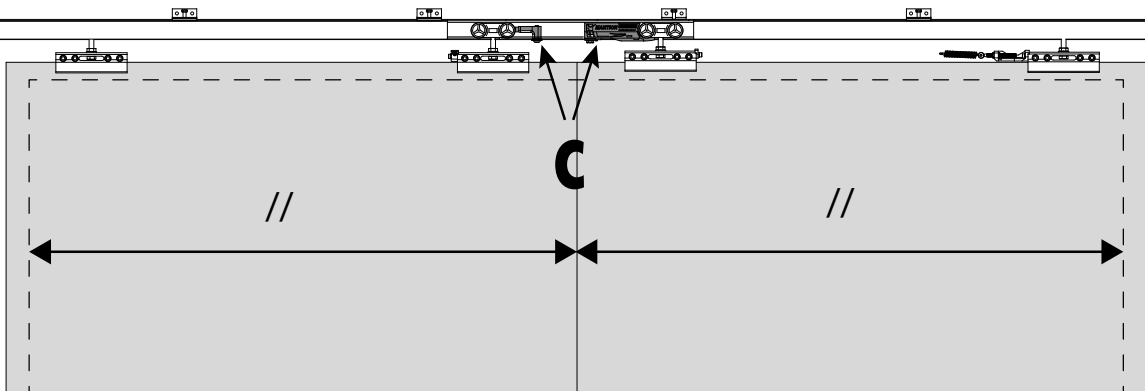


**b**



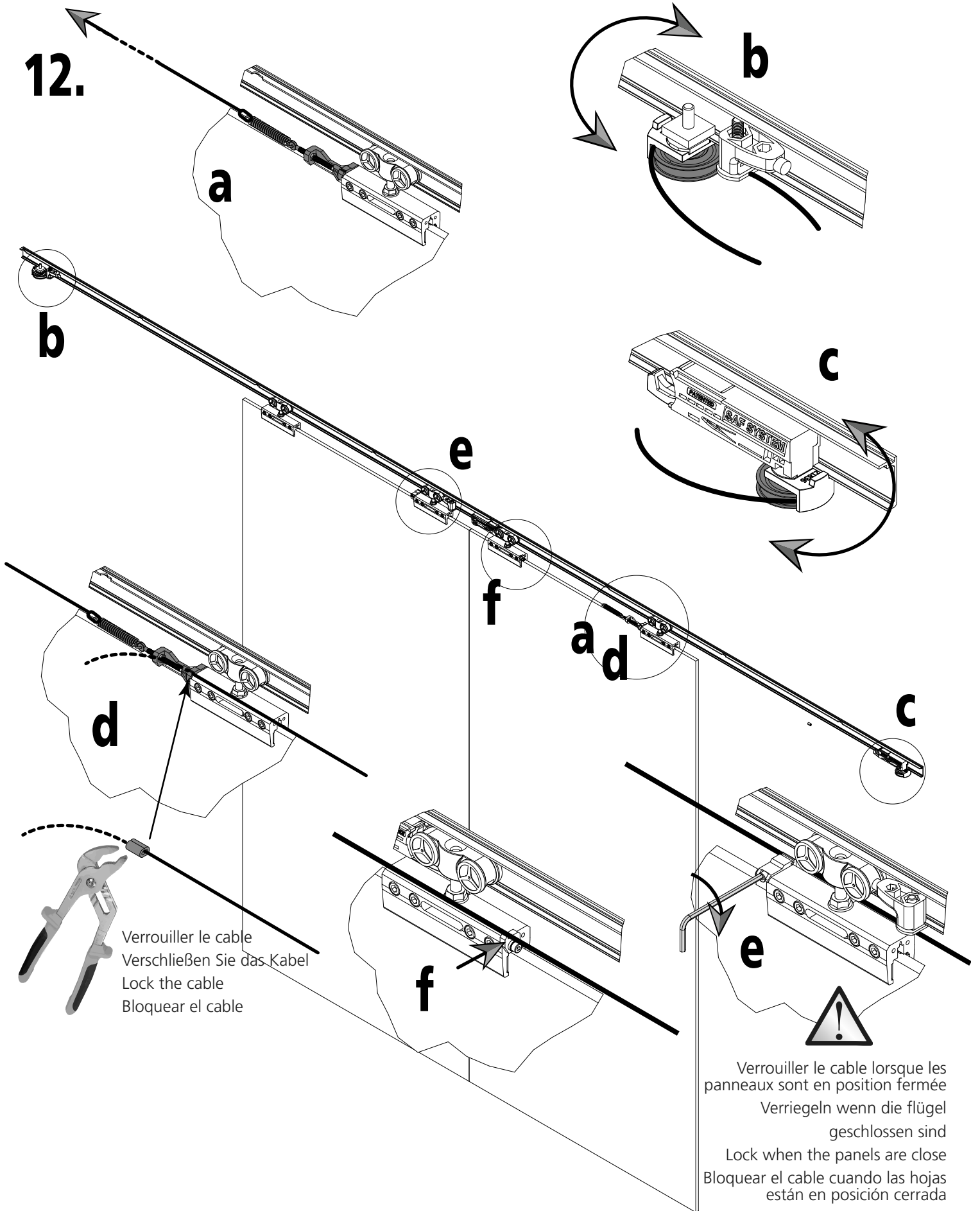
- |          |         |
|----------|---------|
| <b>a</b> | Serrage |
| <b>b</b> | Klemmen |
|          | Fitting |
| <b>c</b> | Apriete |

**c**



INSTALLATION / MONTAGE / ASSEMBLY / MONTAJE

12.



Verrouiller le cable  
 Verschließen Sie das Kabel  
 Lock the cable  
 Bloquear el cable

Verrouiller le cable lorsque les  
 panneaux sont en position fermée  
 Verriegeln wenn die flügel  
 geschlossen sind  
 Lock when the panels are close  
 Bloquear el cable cuando las hojas  
 están en posición cerrada