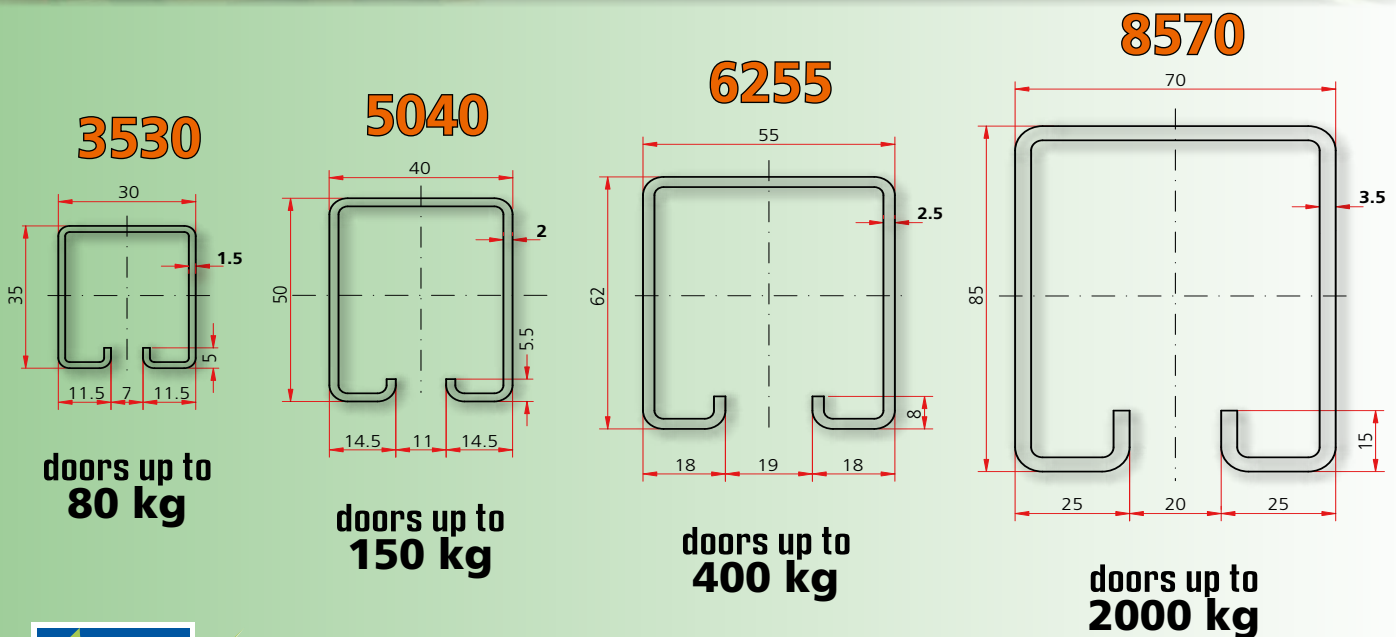
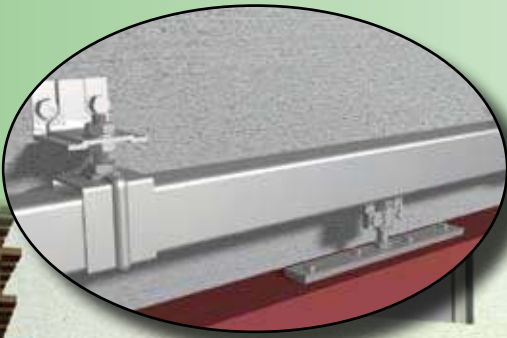


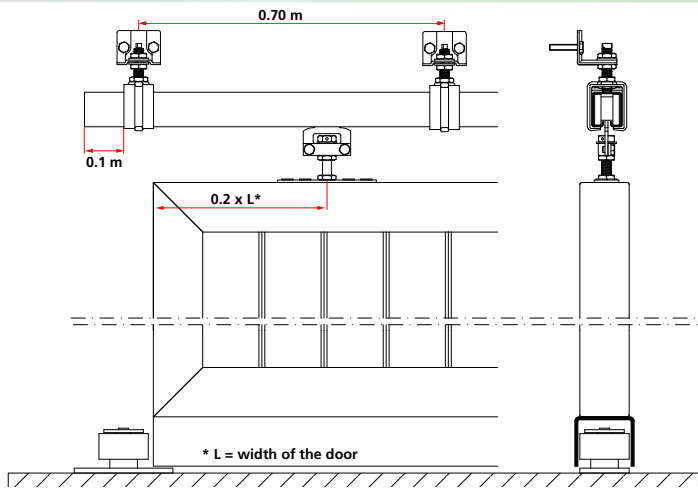
ITEMS for STRAIGHT SLIDING DOORS

High protection galvanised steel

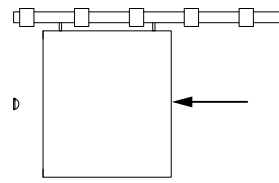
Meet the highest requirements of
the standard **EN 1527**

Track 8570 : steel with high limit of
elasticity (**HLE**).

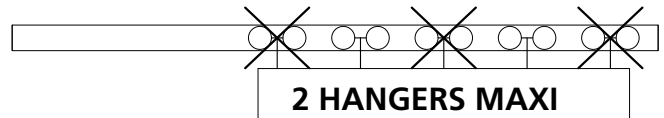
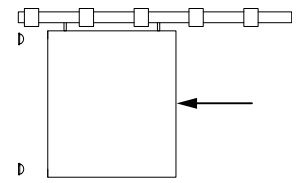




LIGHT DOOR

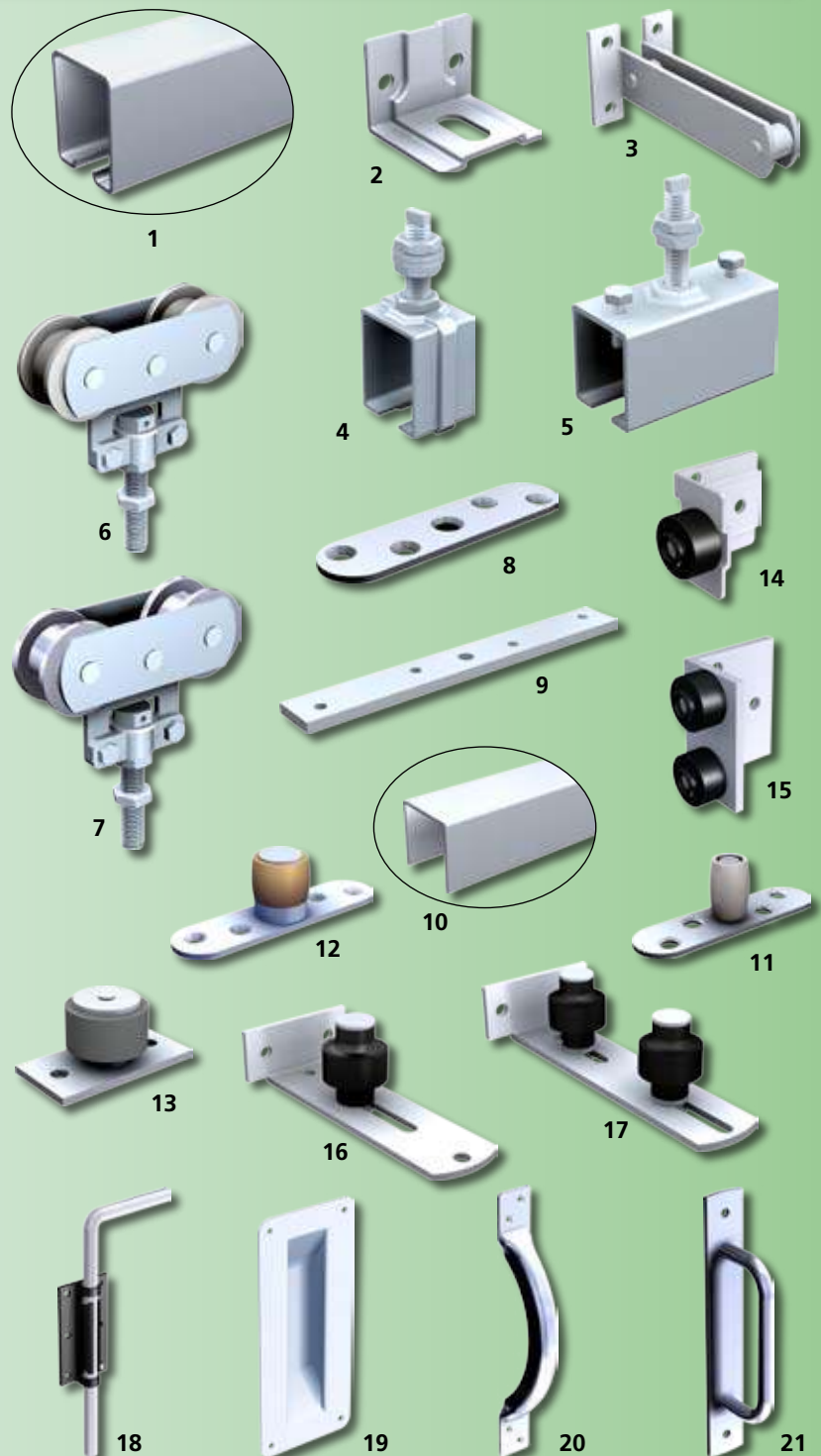


HEAVY DOOR



HANGERS AND ACCESSORIES FOR SPORTUB TRACKS

3530	5040	6255	8570	Fig.	Description
3530/400	5040/400	6255/400	8570/400	1	4 m track
3530/500	5040/500	6255/500	8570/500		5 m track
3530/600	5040/600	6255/600	8570/600		6 m track
3533	5043	6258	8573	2	Angle plate
3536	5046	6261	8576	3	Adjustment plate
3531	5041	6256	8571	4	Fixing bracket
3531 MC	5041 MC	6256 MC	8578 MC	5	Joining bracket
235 D 80 kg	255 D 150 kg	-	-	6	Hanger with Delrin wheels
235 A 80 kg	255 A 150 kg	265 300 kg	285 600 kg	7	Hanger with steel wheels
-	-	-	285 S 1200 kg	6	Hanger with steel wheels
36	56	66	86	8 9	Plate
1109/400	1110/400	1115/400	-	10	U-channel in 4 m.
1109/500	1110/500	1115/500	-		U-channel in 5 m.
1109/600	1110/600	1115/600	-		U-channel in 6 m.
1102 U 25x17	1099 U 30x30	1101 U 30x30	1059 U 50x40	11 12 13	Guide for U-channel
2091	-	2094	-	14 15	Stop
-	1091 V	-	-	16	Guide with 1 olive
-	1092 V	-	-	17	Guide with 2 olives
1314	-	1316	-	18	Reinforced cane bolt
-	1290	-	-	19	Handle
1298	-	1297	-	20 21	Handle



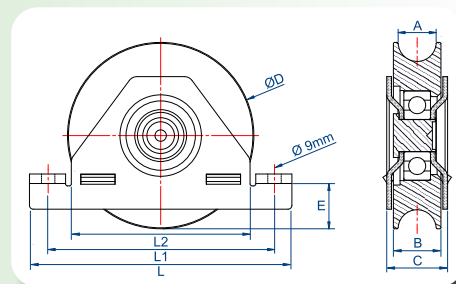
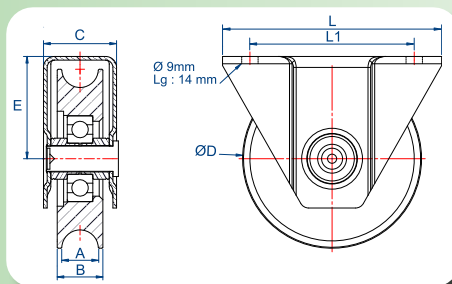
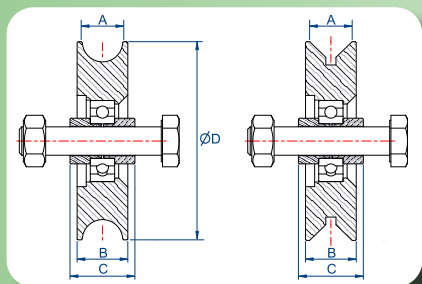
THE CAPACITIES ARE GIVEN NOT PER HANGER BUT PER DOOR .

FOR TRACKS IN SPECIAL LENGTHS OR FOR HANGERS OF BIGGER CAPACITY, PLEASE INQUIRE.

BOTTOM SLIDING GATES

NEW:

Reinforced bearings



STEEL WHEELS								
Round groove	Triangular groove	Wheel capacity*	Capacity of the bearing	Ø D	A	B	C	Screw dimensions
20100 R20	20100 V20	400	670	100	20	25	32	M 14x70
20120 R20	20120 V20	500	670	120	20	25	32	M 14x70
20140 R20	20140 V20	550	670	140	20	25	32	M 14x70
20160 R20	20160 V20	700	880	160	20	25	32	M 16x70
20200 R20	20200 V20	750	880	200	20	25	32	M 16x70
STAINLESS STEEL WHEELS								
20100 R20 X		400	670	100	20	25	32	M 14x70
20120 R20 X		500	670	120	20	25	32	M 14x70



WHEELS WITH EXTERNAL MOUNTING BRACKET AND STEEL WHEELS										
Round groove	Triangular groove	Wheel capacity*	Capacity of the bearing	Ø D	L	L1	A	B	C	E
21100 R20	21100 V20	400	670	100	120	90	20	25	40	56



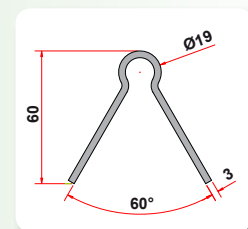
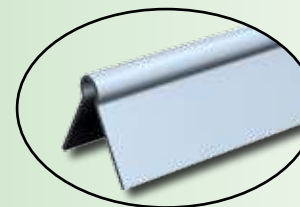
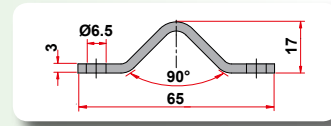
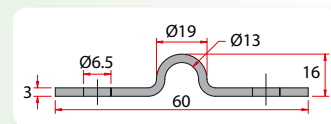
WHEELS WITH INTERNAL MOUNTING BRACKET											
Round groove	Triangular groove	Wheel capacity*	Capacity of the bearing	Ø D	L	L1	L2	A	B	C	E
22100 R20	22100 V20	400	670	100	138	119	98	20	25	32	35.5
22120 R20	22120 V20	500	670	120	186	162	138	20	25	32	38.5
22140 R20	22140 V20	550	670	140	186	162	138	20	25	32	48.5
STAINLESS STEEL WHEELS WITH INTERNAL MOUNTING BRACKET											
22100 R20 X		400	670	100	138	119	98	20	25	32	35.5
22120 R20 X		500	670	120	186	162	138	20	25	32	38.5



* The capacity per wheel (which is different from the capacity of the bearing) includes the force required for the displacement of the gate. This capacity will determine the choice of the wheel, according to the weight of the gate.
 Exemple : the type of wheel required for the equipment of a 800 kg gate is 20100R20.

TRACKS - SCREWING AND SEALING TYPE

TRACK SCREWING TYPE FOR ROUND GROOVE - LENGTH : 3 M	
20021 RV/3	In galvanized steel D = 19 ; d = 13 ; e = 3 ; H = 16 ; P = 6,5 ; L = 60
20021 RVX/3	Ditto in STAINLESS STEEL
TRACK SCREWING TYPE FOR TRIANGULAR GROOVE - LENGTH : 3 M	
20021 VV/3	In galvanized steel. H = 17 ; P = 6,5 ; L = 65 ; e = 3
TRACK SEALING TYPE FOR ROUND GROOVE - LENGTH : 3 M.	
20021 RS/3	In galvanized steel. D = 19 ; d = 13 ; e = 3 ; H = 60
20021 RSX/3	Ditto in STAINLESS STEEL



A complete documentation about our range of wheels will be sent upon request

CANTILEVER GATES

HIGH PERFORMANCE SINGLE HANGERS

9952 PAF	Hanger equipped with reinforced ball bearings. Up to 200 Kg capacity. For track : 9050
9962 PAF	Hanger equipped with reinforced ball bearings. Up to 400 Kg capacity. For track : 9060
9972 PAF	Hanger equipped with reinforced ball bearings. Up to 700 Kg capacity. For track : 9070

HIGH PERFORMANCE DOUBLE HANGERS

9958 PAF	Hanger equipped with reinforced ball bearings. Up to 300 Kg capacity. For track : 9050
9968 PAF	Hanger equipped with reinforced ball bearings. Up to 600 Kg capacity. For track : 9060
9978 PAF	Hanger equipped with reinforced ball bearings. Up to 1300 Kg capacity. For track : 9070

SINGLE HANGERS FOR ALUMINIUM TRACKS

9952 N	Hangers with polyamide wheels mounted on high precision ball bearings. For track : 10500 PAF Up to 80 Kg capacity and 4 m opening width.
9962 N	Hangers with polyamide wheels mounted on high precision ball bearings. For track : 10600 PAF Up to 130 Kg capacity and 5 m opening width.

DOUBLE HANGERS FOR ALUMINIUM TRACKS

9958 N	Hangers with polyamide wheels mounted on high precision ball bearings. For track : 10500 PAF Up to 160 Kg capacity and 4.50 m opening width.
9968 N	Hangers with polyamide wheels mounted on high precision ball bearings. For track : 10600 PAF Up to 250 Kg capacity and 6 m opening width.



9958 PAF / 9968 PAF
9978 PAF



9952 PAF / 9962 PAF
9972 PAF



9958 N/9968 N



9952 N/9962 N

TRACKS AND ACCESSORIES

Part Nr	Description
9050	Track in galvanized steel - Length : 6 meters. Available in plain version (N).
9060	Track in galvanized steel - Length : 6 and 9 meters. Available in plain version (N).
9070	Track in galvanized steel - Length : 6 and 9 meters. Available in plain version (N).
10500 PAF	Aluminium track - Length : 6 meters
10600 PAF	Aluminium track - Length : 6 and 9 meters
10510 PAF	Aluminium ornamental cap for 10500 PAF track. Screwing type.
10610 PAF	Aluminium ornamental cap for 10600 PAF track. Screwing type.
1050 GA	Supporting end wheel for track 10500 PAF comprising an axle, two spacers, two circlips and a wheel.
1060 GA	Supporting end wheel for track 10600 PAF comprising an axle, two spacers, two circlips and a wheel.
1050 E	End guide for track 9050.
1060 E	End guide for track 9060 and 10500 PAF.
1070 E	End guide for track 9070 and 10600 PAF.
1051 G	End wheel support for track 9050.
1061 G	End wheel support for track 9060.
1071 G	End wheel support for track 9070.
1052	Adjustable upper guide. Sealing type.
1053	Adjustable upper guide. Screwing type.
1062	Upper guide with two adjustable nylon olives, for 40 to 70 mm tube.
1064	Upper guide with four adjustable nylon olives, for 40 to 70 mm tube.

Steel track



Aluminium track



1050 GA
1060 GA

10510 PAF
10610 PAF



1051 G/1061 G/1071 G

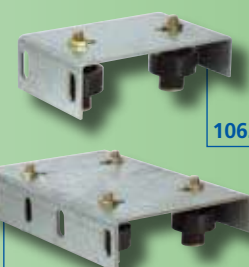


1050E/1060 E/1070 E



1053

1052



1062

1064