

SAF®-SLIM

MADE IN FRANCE



CYCLES
100 000

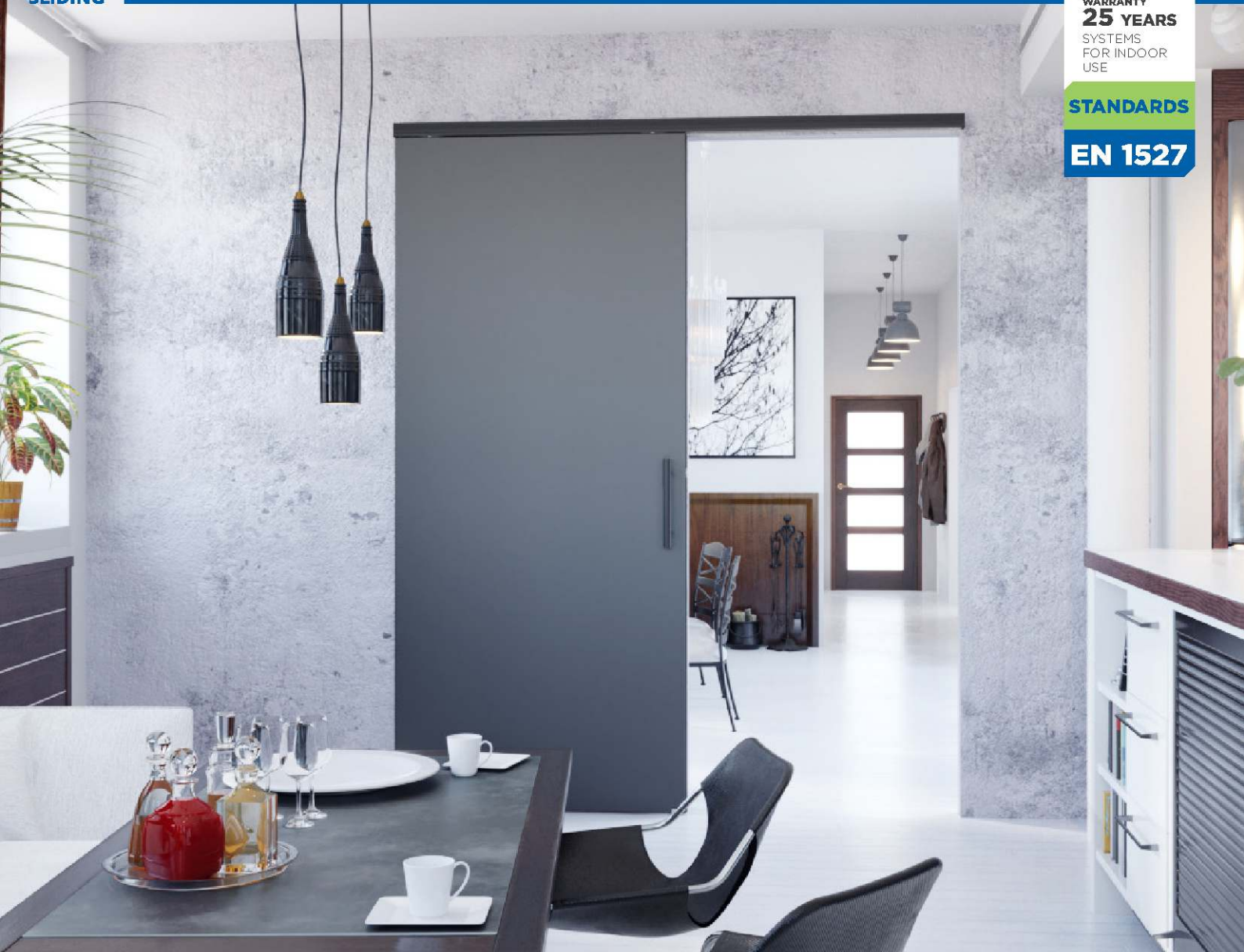
WARRANTY
25 YEARS
SYSTEMS
FOR INDOOR
USE

STANDARDS

EN 1527

SLIDING SYSTEM for doors up to 80 KG

SLIDING



SAF®-SLIM compact and streamlined!

Quickly and easily mounted to give your interiors a modern feel.

- No door machining required
- Adjustable vertical alignment of door
- A minimum number of components
- Compact, streamlined look
- No visible fastenings
- Smaller gap between track and door: 3 mm
- 2 finishes: brushed black or aluminium

Optimise your spaces and make life easier!



DESIGNER AND MANUFACTURER OF SLIDING SYSTEMS SINCE 1920

www.mansion.com

MANTION
SLIDING SYSTEMS

MANTION SAS - 7, rue Gay Lussac - 25000 BESANÇON - FRANCE / Tél. +33 (0) 3 81 50 56 77 / export@mansion.com



SAF-SLIM for doors up to 80 Kg

COMPLETE SETS - STANDARD DOOR 830 MM

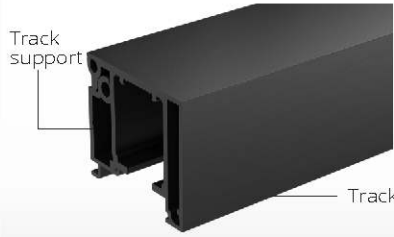
Item Nr.	Description	
SAF-S82D-160-1 SAF-S82C-160-1	Set for 1 door weighing 10-20 Kg and standard width 830 mm : - 1 fitting kit (track + support) of 1595 mm (40x45 mm) - 1 set of caps - 2 rollers SAF + 2 plates - 1 adjustable stop 11213 - 1 damper M65S - 1 floor guide 1103R - 2 hexagonal wrenches, screws, pins and assembly instructions	6
SAF-S82D-160-2 SAF-S82C-160-2	Ditto for 1 door weighing 21-60 Kg , and 1 damper M66S (instead of M65S)	6

COMPLETE SETS - DOOR UP TO 1030 MM

SAF-S82D-195-1 SAF-S82C-195-1	Set for 1 door weighing 10-20 Kg and width up to 1030 mm : - 1 fitting kit (track + support) of 1950 mm (40x45 mm) can be cut to size - 1 set of caps - 2 rollers SAF + 2 plates - 1 adjustable stop 11213 - 1 damper M65S - 1 floor guide 1103R - 2 hexagonal wrenches, screws, pins and assembly instructions	6
SAF-S82D-195-2 SAF-S82C-195-2	Ditto for 1 door weighing 21-60 Kg , and 1 damper M66S (instead of M65S)	6

- S82D: ALU-ANODIZED
- S82C: BLACK-ANODIZED

FITTING KIT BLACK-ANODIZED



CAPS SET BLACK-ANODIZED



FITTING KIT ALU-ANODIZED



CAPS SET ALU-ANODIZED



customised Essential elements required for your SAF-SLIM system: **1 gear + 1 fitting kit + 1 set of caps**

RETAIL COMPONENTS - TRACK CUTTING CUSTOMISED

SAF82A	Gears for doors up to 80 Kg : - 2 rollers SAF + 2 plates - 2 adjustable stops 11213 (damper closer in option) - 1 floor guide 1103R - 2 hexagonal wrenches, screws, pins and assembly instructions	6
11108SMD/SP1	Fitting kit <u>Alu-anodized</u> cut to length (made to measure). For opening > 960 mm and up to 1460 mm .	
11108SMC/SP1	Ditto in <u>Black-anodized</u>	
11108SMD/SP2	Fitting kit <u>Alu-anodized</u> cut to length (sur mesure). For opening > 1460 mm .	
11108SMC/SP2	Ditto in <u>Black-anodized</u>	
11052D	<u>Alu-anodized</u> set of caps for fitting kit 11108SMD	
11052C	<u>Black-anodized</u> set of caps for fitting kit 11108SMC	
M65S	Buffer damper system for softly opening and/or closing doors (over 100 mm). The damper automatically accompanies the door to its open and/or closed position. Suitable for doors weighing 10-20 kg . It is recommended that 2 dampers be used for doors with a width of 830 mm or more	8
M66S	Ditto for doors weighing 21-60 kg	8
M67S	Ditto for doors weighing 61-80 kg . It is recommended that 2 dampers be used for doors with a width of 870 mm or more	8

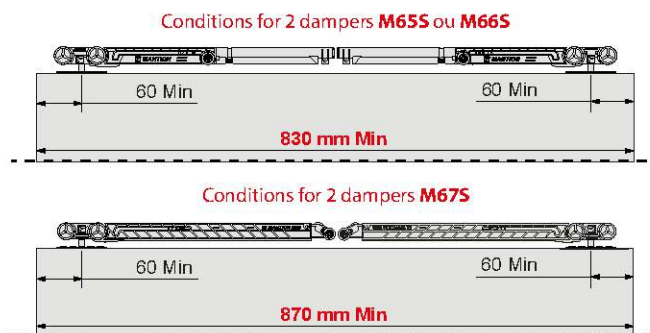
GEAR SAF82A



FOR THE BEST OPERATING RESULTS

INSTALL **2** DAMPERS

One for the closing... and one for the opening!



Mounting video



Mounting instructions