

SAF-INSIDE® FRAME FOR SLIDING POCKET DOORS

MANTION Innovation:
Reinforced Frame Box



SOLID:

Vertical opening reinforcements for higher inertia making the Manton frame box one of the most robust on the market

VERSATILE:

For single or double doors, made of wood or glass
Motorised system available on request

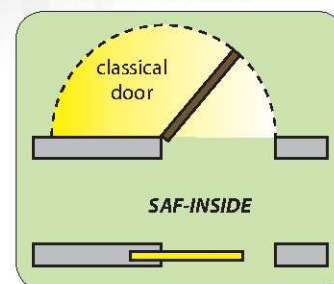
SILENT:

Resulting from many hours of design and testing, our new fittings provide unmatched effortless and silent movement (100,000 cycles guaranteed!)

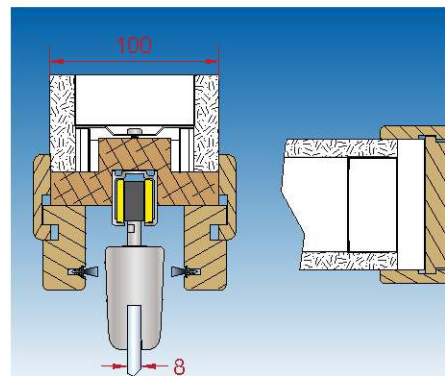
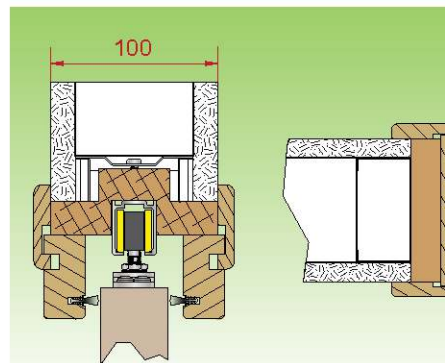
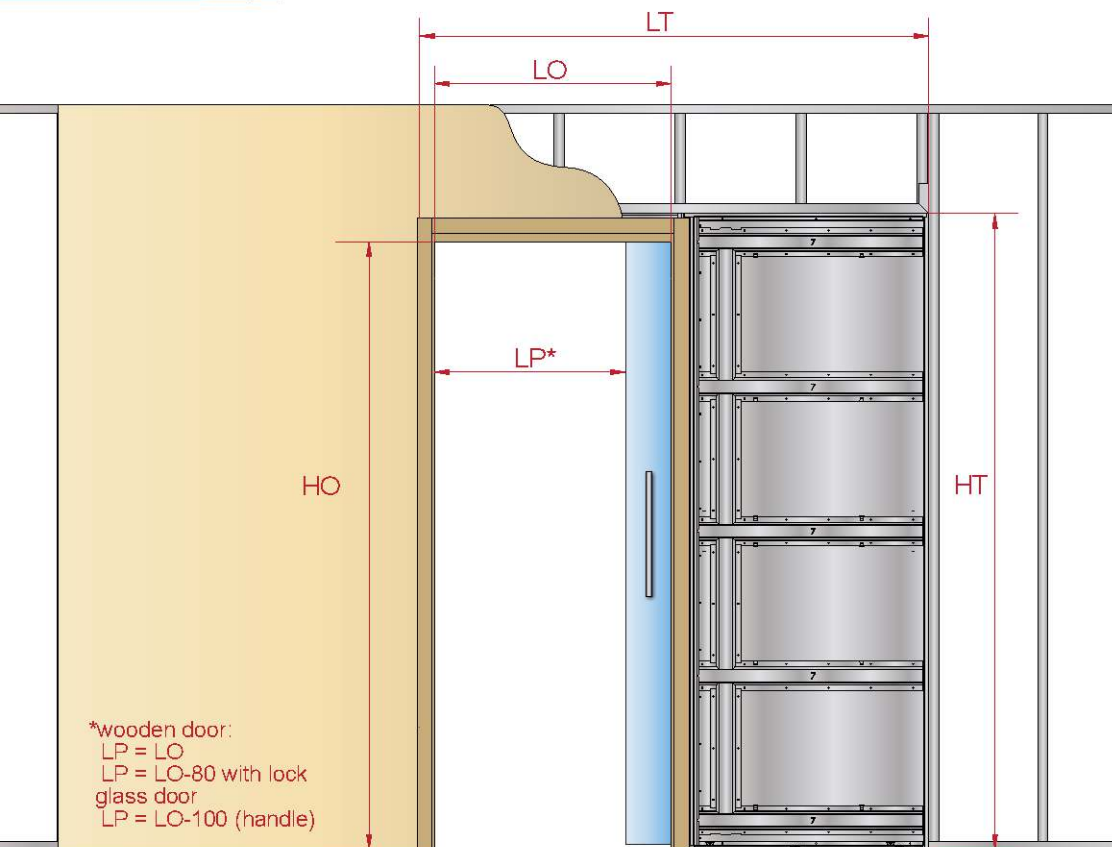
CONVENIENT:

Door stop (adjustable clamping force) allowing you to lock the door in open or closed position
Optional soft-close damper system

SAVE SPACE:



MANTION
HERCULE® - SPORTUB® - MMSPORT®



SET for single wood door (40 mm max.)

ITEM NO.	OPENING LO X HO	FREE PASSAGE LP without lock / with lock	SPACE REQUIRE- MENT LT X HT	FINISHED INTERNAL WALL	INTERNAL PASSAGE	DOOR* W X H
SAF-INSIDE70	695 x 2040	695 / 615	1510 x 2140	100	55	730 x 2040
SAF-INSIDE80	795 x 2040	795 / 715	1710 x 2140	100	55	830 x 2040
SAF-INSIDE789F	Cladding set for MDF door frame – suitable for both items above					*th. 40 mm max. 80 kg max.
SAF-INSIDE90	895 x 2040	895 / 815	1910 x 2140	100	55	930 x 2040
SAF-INSIDE100	995 x 2040	995 / 915	2110 x 2140	100	55	1030 x 2040
SAF-INSIDE9109F	Cladding set for MDF door frame – suitable for both items above					*th. 40 mm max. 80 kg max.

SET contents:

- 1 frame box and galvanised steel support structure – 1 reinforcement on casing side and 1 wood track support
- 1 assembled aluminium track – 2 mounting devices (with ball bearings) + plates
- 2 end stops (adjustable stop for closing)
- 1 polyamide guide – Screws and bolts, spanner and installation instructions
- Optional soft-close damper, see page 4

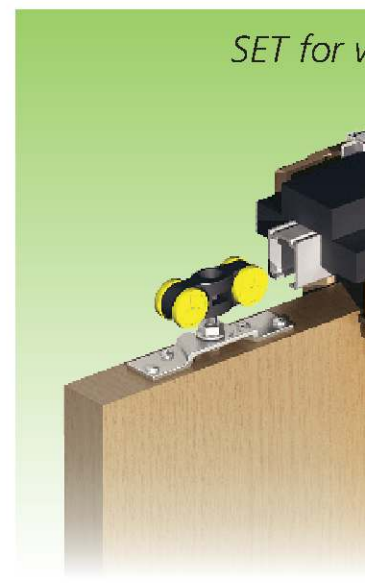
SET for single glass door (8 mm)

ITEM NO.	OPENING LO X HO	FREE PASSAGE LP	SPACE REQUIRE- MENT LT X HT	FINISHED INTERNAL WALL	INTERNAL PASSAGE	DOOR* W X H
SAF-INSIDECO70	695 x 2040	595	1510 x 2140	100	55	730 x 2015
SAF-INSIDECO80	795 x 2040	695	1710 x 2140	100	55	830 x 2015
SAF-INSIDECO789F	Cladding set for MDF door frame – suitable for both items above					*th. 8 mm 80 kg max.
SAF-INSIDECO90	895 x 2040	795	1910 x 2140	100	55	930 x 2015
SAF-INSIDECO100	995 x 2040	895	2110 x 2140	100	55	1030 x 2015
SAF-INSIDECO9109F	Cladding set for MDF door frame – suitable for both items above					*th. 8 mm 80 kg max.

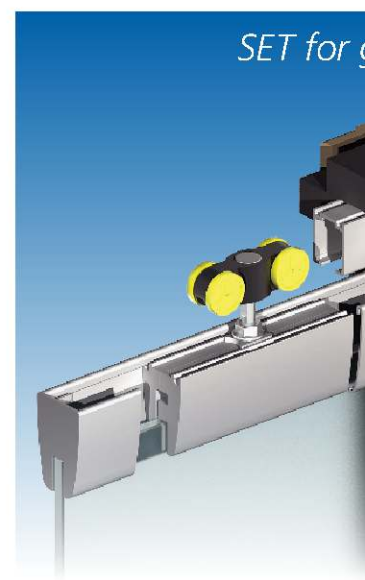
SET contents:

- 1 frame box and galvanised steel support structure – 1 reinforcement on casing side and 1 wood track support
- 1 assembled aluminium track – 2 mounting devices (with ball bearings) supplied with clamp – 2 pelmets
- 2 end stops (adjustable stop for closing)
- 1 polyamide guide
- Screws and bolts, spanner and installation instructions

SET for w



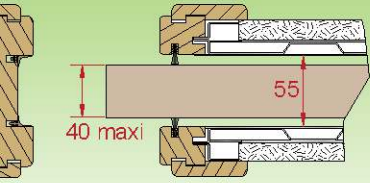
SET for g



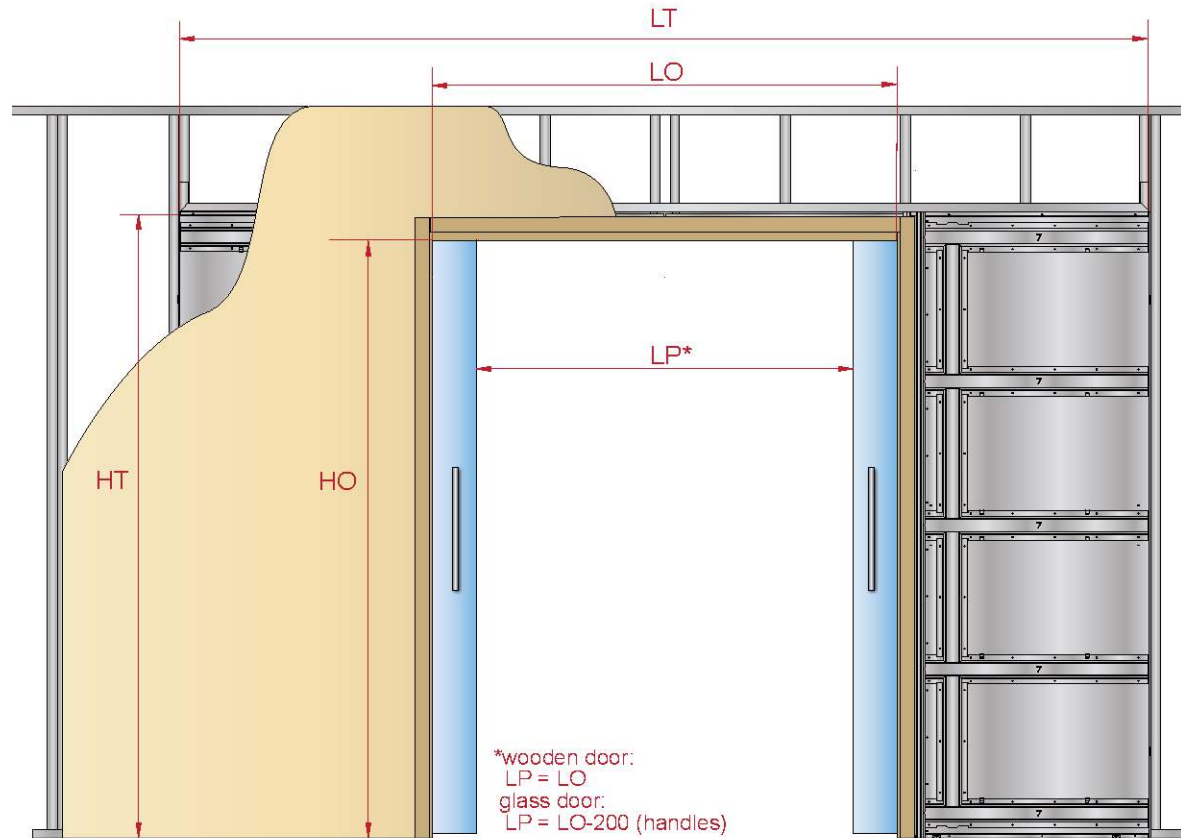
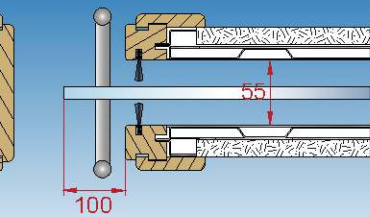
Frame set for **DOUBLE DOORS** made of wood or glass



Cross-section of frame for wood door



Cross-section of frame for glass door



wood door



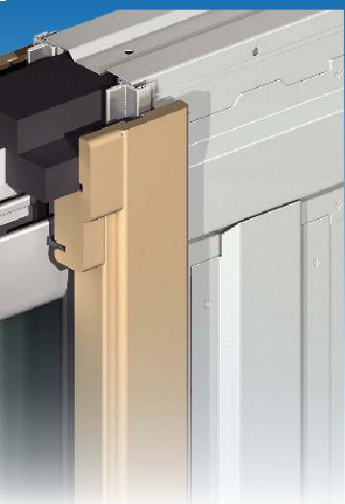
SET for double wood door (40 mm max.)

ITEM NO.	OPENING LO X HO	FREE PASSAGE LP	SPACE REQUIREMENT LT X HT	FINISHED INTERNAL WALL	PASSAGE	DOOR* W X H
SAF-INSIDE140	1385 x 2040	1385	2915 x 2140	100	55	730 x 2040
SAF-INSIDE160	1585 x 2040	1585	3315 x 2140	100	55	830 x 2040
SAF-INSIDE469F	Cladding set for MDF door frame – suitable for both items above					*th. 40 mm max. 80 kg max.
SAF-INSIDE180	1785 x 2040	1785	3715 x 2140	100	55	930 x 2040
SAF-INSIDE200	1985 x 2040	1985	4115 x 2140	100	55	1030 x 2040
SAF-INSIDE829F	Cladding set for MDF door frame – suitable for both items above					*th. 40 mm max. 80 kg max.

SET contents:

2 frame boxes with galvanised steel support structure – 2 wood track supports
2 assembled aluminium tracks with sleeve – 4 mounting devices (with ball bearings) + plates
4 end stops (adjustable stop for closing)
2 polyamide guides – Screws and bolts, spanner and installation instructions
Optional soft-close damper or synchronisation set, see page 4

glass door



SET for double glass door (8 mm)

ITEM NO.	OPENING LO X HO	FREE PASSAGE LP	SPACE REQUIREMENT LT X HT	FINISHED INTERNAL WALL	PASSAGE	DOOR* W X H
SAF-INSIDECO140	1385 x 2040	1185	2915 x 2140	100	55	730 x 2015
SAF-INSIDECO160	1585 x 2040	1385	3315 x 2140	100	55	830 x 2015
SAF-INSIDECO469F	Cladding set for MDF door frame – suitable for both items above					*th. 8 mm 80 kg max.
SAF-INSIDECO180	1785 x 2040	1585	3715 x 2140	100	55	930 x 2015
SAF-INSIDECO200	1985 x 2040	1785	4115 x 2140	100	55	1030 x 2015
SAF-INSIDECO829F	Cladding set for MDF door frame – suitable for both items above					*th. 8 mm 80 kg max.

SET contents:

2 frame boxes with galvanised steel support structure – 2 wood track supports
2 aluminium rails with sleeve – 4 mounting devices (with ball bearings) supplied with clamp - 4 pelmets
4 end stops (adjustable stop for closing)
2 polyamide guides
Screws and bolts, spanner and installation instructions – *optional synchronisation set, see page 4*



ACCESSORIES for wood doors

ITEM NO.	DESIGNATION
Soft-close damper	
66AFP11	Damper system allowing for soft closing of doors. Damper automatically follows door to its closed position. For doors up to 40 kg
66AFP12	Ditto for doors up to 80 kg
Lock	
942	Lock set with 2 round handles and keeper + finger pull Stainless steel
942 C	Ditto with cylinder and 2 keys
Handle Sets	
1280	Set of round stainless steel handles and finger pull
1280A	Set of 2 oval stainless steel handles
1281	Stainless steel finger pull (door edge)
Round ABS flush pull 50 mm Ø	
SU510	Black coating
SU511	White coating
SU512	Red coating
SU513	Brown coating
SU514	Beige coating
SU515	Silvery coating
SU516	Golden coating
Metal finger pull 35 mm Ø (ideal for door edge)	
SU517	Chromed metal
SU518	Golden metal
Rectangular metal flush pull 32 x 75 mm	
SU519	Chromed metal
SU520	Golden metal
Synchronisation set	
11050-2	Synchronisation set for 2 opposing 80-kg doors including: - 2 assembled pulleys - 1 driving bracket - 1 mounting bracket with spring - 1 cable, 2 mm in diameter and 10 m long



ACCESSORIES for glass doors

ITEM NO.	DESIGNATION
Set of metal handles	
NEPTUNE-300	Brushed stainless steel finish – Height 300 mm 20 mm Ø
VENUS-505	Brushed stainless steel finish – Height 505 mm 20 mm Ø
VENUS-657	Ditto Height 657 mm
VENUS-810	Ditto Height 810 mm
MARS-325	Brushed stainless steel finish – Height 325 mm 20 mm Ø
MARS-375	Ditto Height 375 mm
MERCURE-330	Brushed stainless steel and anodised aluminium finish for centre part – Height 330 mm 25 mm Ø
MERCURE-370	Ditto Height 370 mm
Set of polycarbonate handles	
102099	Polycarbonate flush pull 69.5 mm Ø
102099-2	Chromed metal flush pull 55 mm Ø
102101	Polycarbonate knob 37 mm Ø
102101-1	Chromed metal knob 30 mm Ø
102101-2	Chromed metal knob 50x60 mm
Seal	
66JN/250	Adhesive dual-material seal to be fitted on door edge to dampen closure
Synchronisation set	
On request, please contact us	

