

OPENTEC® FW75 folding system for wooden panels



OPENTEC® FW75:

- max. weight of panels: **75 Kg**
- max. opening dimensions: **12 x 4 m** (L x h)
- number of panels: **2 to 12** (6 + 6)
- panel width: **400 to 1000 mm**
- panel thickness: **30 to 50 mm**
- for use as interior partitions:
restaurants, hôtels, centres commerciaux, bars ...

+ Easy to use:
the partitions slide easily

+ Easy to install:
convenient access to adjustment modules

+ Robust materials:
anodised aluminium and stainless steel

+ Hangers equipped with nylon
rollers for silent operation

+ High quality concealed hinges
for a clean, sober look



MANTION
SLIDING SYSTEMS

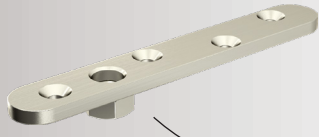
MANTION S.A.S
7, rue Gay Lussac - ZI de Trépillot
25000 Besançon - FRANCE

Tel. +33 3 81 50 56 77 - Fax. +33 3 81 53 29 76

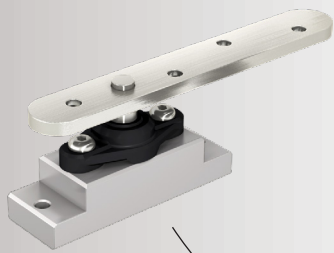
E-mail: mantion@mantion.com

Website: www.mantion.com

Stainless steel plate



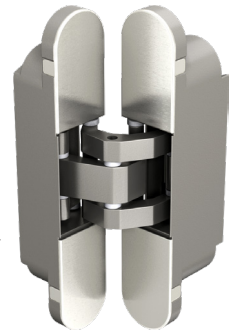
Upper pivot



Lower pivot



Stainless steel hangers with nylon rollers



Concealed hinges



SLIDSOFT : online configurator

Estimating the cost of your project is easy! Simply enter the dimensions of your opening and your options. You will also have access to the full details of the products and plans

www.mantion.com

