

1097

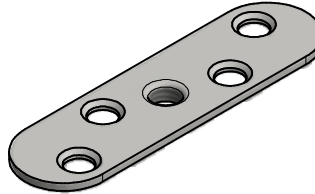
0222

Garniture pour 1 panneau 40Kg

Contenu:

- 2 montures 0222
- 2 platines 26
- 2 platines 21
- 2 butées 1097
- 1 guide 1103
- 1 clé plate
- Vis de pose
- +  
- 1 rail aluminium 2526F en longueur de 1.85m

0222



26

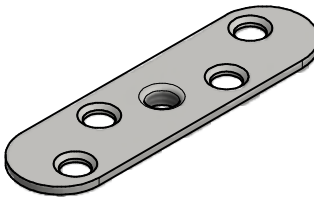
Gear set for 1 panel 40Kg

Content :

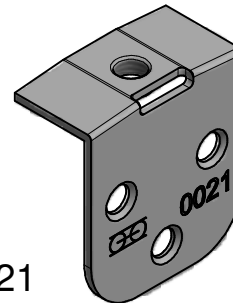
- 2 hangers 0222
- 2 plates 26
- 2 plates 21
- 2 stoppers 1097
- 1 guide 1103
- 1 spanner
- Screws
- +  
- 1 aluminium track 2526F, 1.85m long



1097



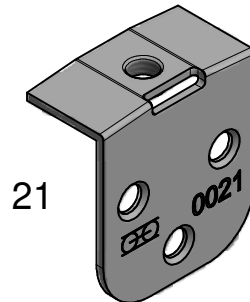
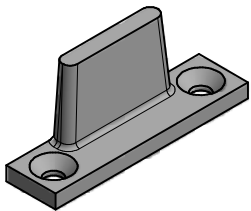
26



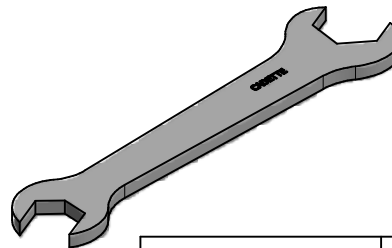
21

+

1103



21



Référence Item Nr: **CAD185A-1**

Rail associé Combined track: **2526F**

7,rue Gay Lussac  
25000 BESANCON