

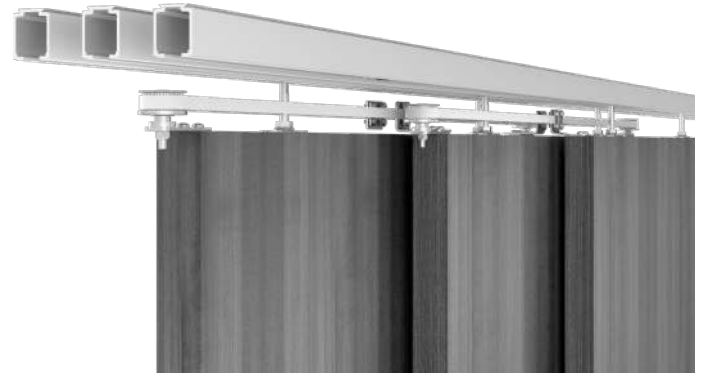


INSTRUCTION DE MONTAGE  
MONTAGEANLEITUNG  
INSTRUCTIONS FOR ASSEMBLY  
INSTRUCCIONES DE MONTAJE

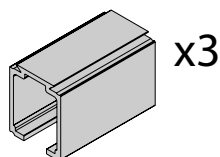
# SAF-TELESCOPIC

## NM\_SAFTL\_006

|  |  |
|--|--|
| Poids maximal des panneaux<br>Maximales Gewicht<br>Maximum weight<br>Peso máximo                       | 120 KG<br>265 lbs.                       |
| Epaisseur des panneaux<br>Ladendicke<br>Shutter thickness<br>Espesor de las contraventanas             | 45 mm<br>1 <sup>3</sup> / <sub>4</sub> " |
| Largeur maximale des panneaux<br>Maximale Flügelbreite<br>Maximum panel width<br>Ancho máximo de panel | 700 - 1500 mm<br>27" - 59"               |

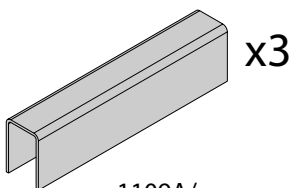


# COMPOSITION - ZUSAMMENSETZUNG - COMPOSICIÓN



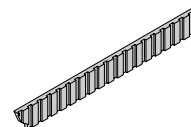
11312/...

x3



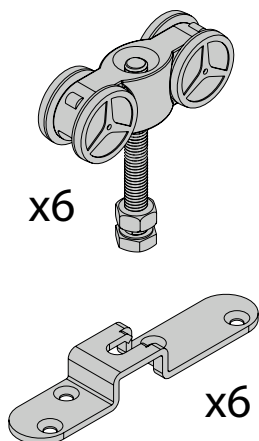
1109A/...

x3

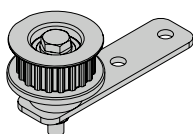


10172/...

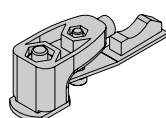
SAF121-TL3



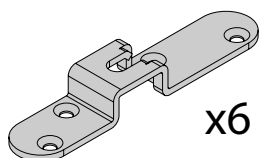
x6



x4

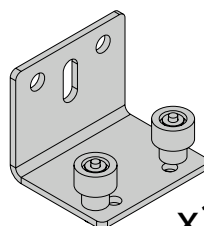


x2

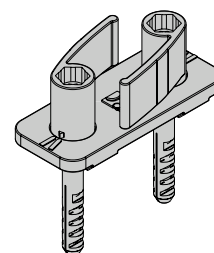


x6

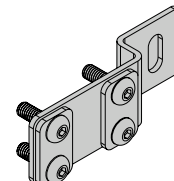
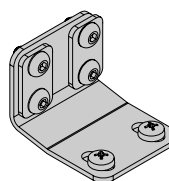
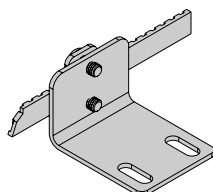
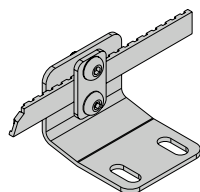
1102TL3



x2



10190S23



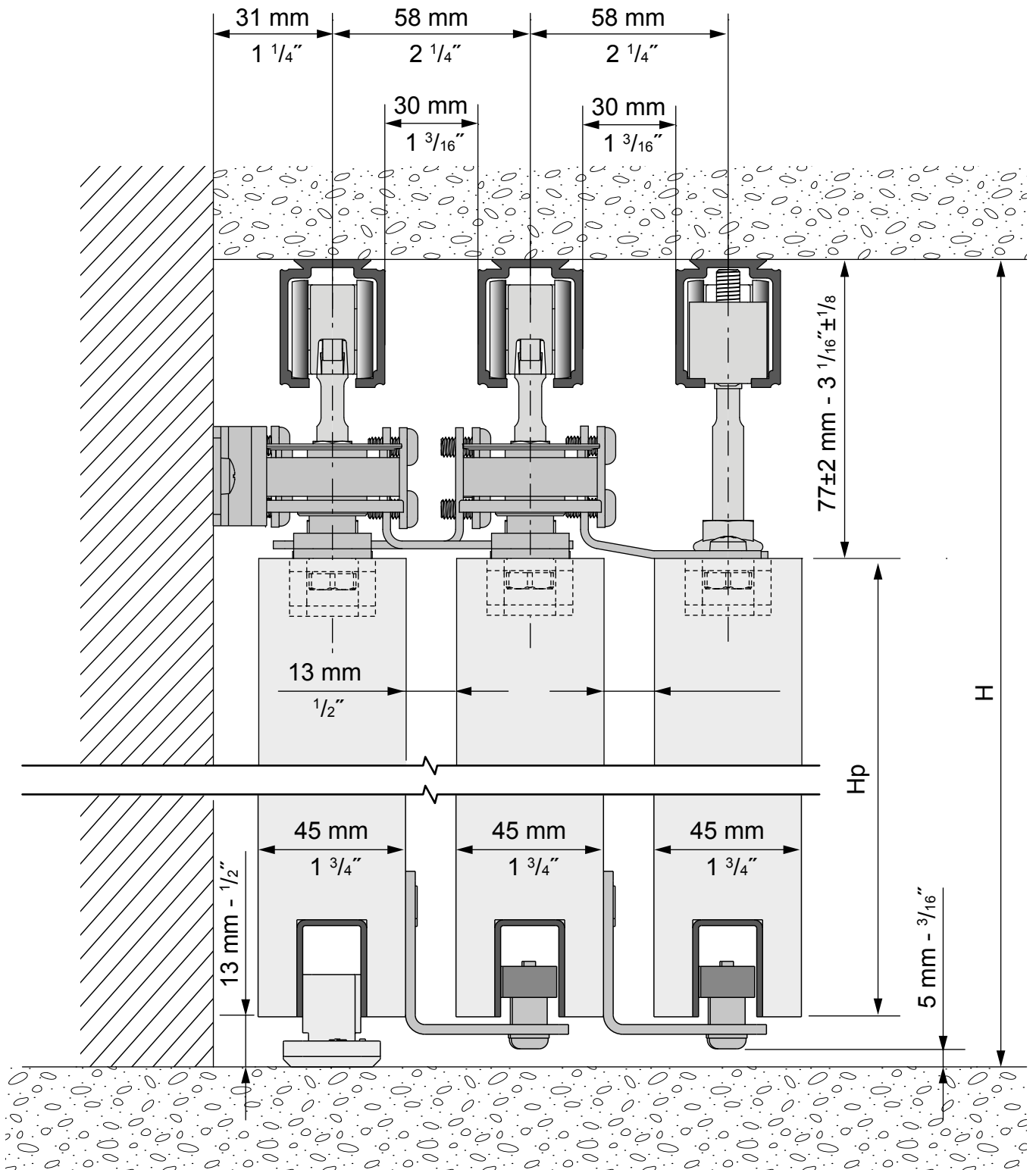
## CONDITIONS DE POSE / MONTAGEBEDINGUNGEN / INSTALLATION REQUIREMENTS / CONDICIONES DE COLOCACION:

- Produit destiné à une utilisation en intérieur / Dieses Produkt ist nur für Innenanwendung geeignet / For indoor use only / Producto para utilización en interior
- Ne pas installer dans des endroits humides / Nicht in feuchten Atmosphären verwenden / Do not install in humid places / No instalar en lugares húmedos
- Le montage doit être effectué par des monteurs qualifiés / Die Montage muss von qualifizierten Handwerkern geführt werden / Installation must be performed by skilled personnel / el montaje tiene que hacerse por instaladores cualificados

## DIMENSIONS / MASSE / SIZING / DIMENSIONES (mm):

- Epaisseur panneau / Paneelstärke / Panel thickness / Grueso del panel: **45 mm**
- Poids panneau / Paneelgewicht / Panel weight / Peso panel: **120 Kg MAX**

# 45 mm - 1 3/4"



H = Hauteur de baie  
Opening height  
Öffnungshöhe  
Altura de luz

Hp = Hauteur panneaux  
Door height  
Schiebetürhöhe  
Altura de panel

$$H_p = H - 90 \text{ mm} = \text{_____ mm}$$

$$H_p = H - 3 \frac{1}{2} \text{ " } = \text{_____ "}$$

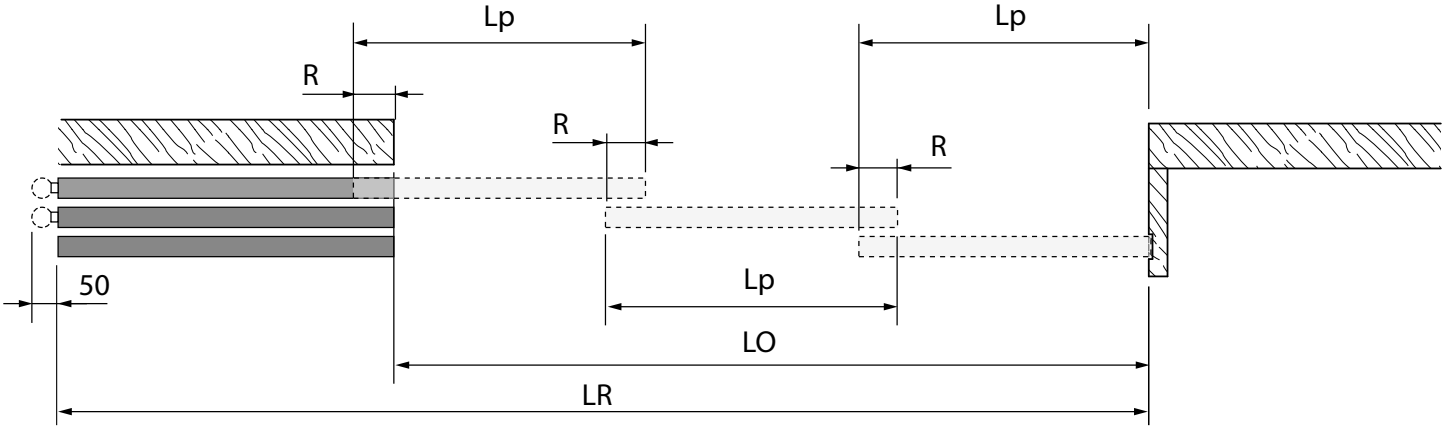
# PLANIFICATION - PLANUNG - PLANNING - PLANIFICACIÓN



$$R = 90 \text{ mm} \quad L_p = \frac{(3 \times R) + LO}{3} = \text{_____ mm}$$

$$3 \frac{1}{2}'' \quad LR = LO + L_p = \text{_____ mm}$$

$700 \leq L_p \leq 1500$   
 $27'' \leq L_p \leq 59''$   
 $LR \leq 6000$   
 $LR \leq 235''$



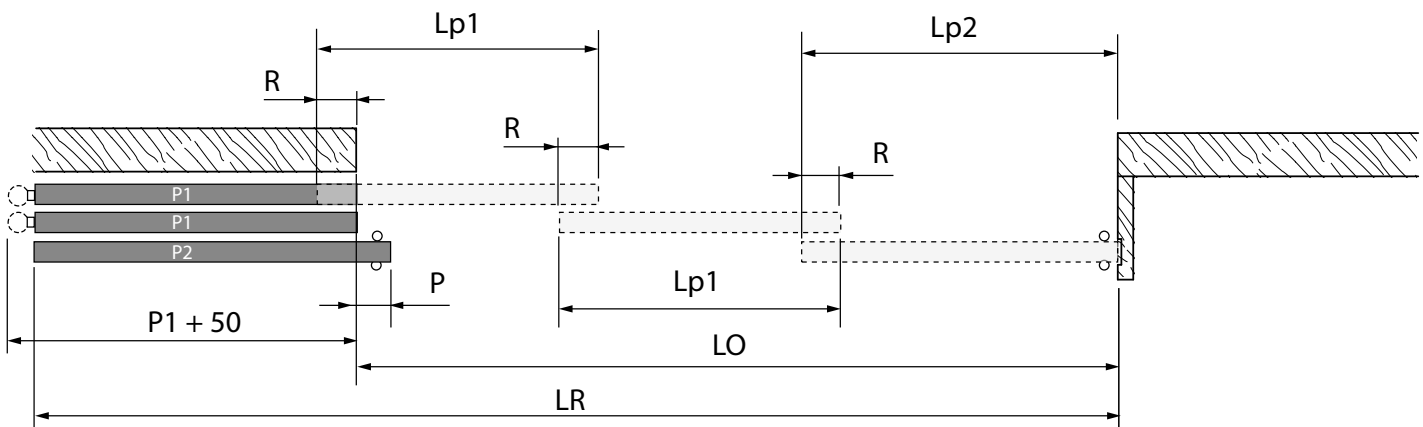
$$R = 90 \text{ mm} \quad L_{p1} = \frac{(3 \times R) + (LO - P)}{3} = \text{_____ mm}$$

$$3 \frac{1}{2}'' \quad L_{p2} = L_{p1} + P = \text{_____ mm}$$

$$P = 90 \text{ mm} \quad LR = LO + L_{p1} = \text{_____ mm}$$

$$3 \frac{1}{2}''$$

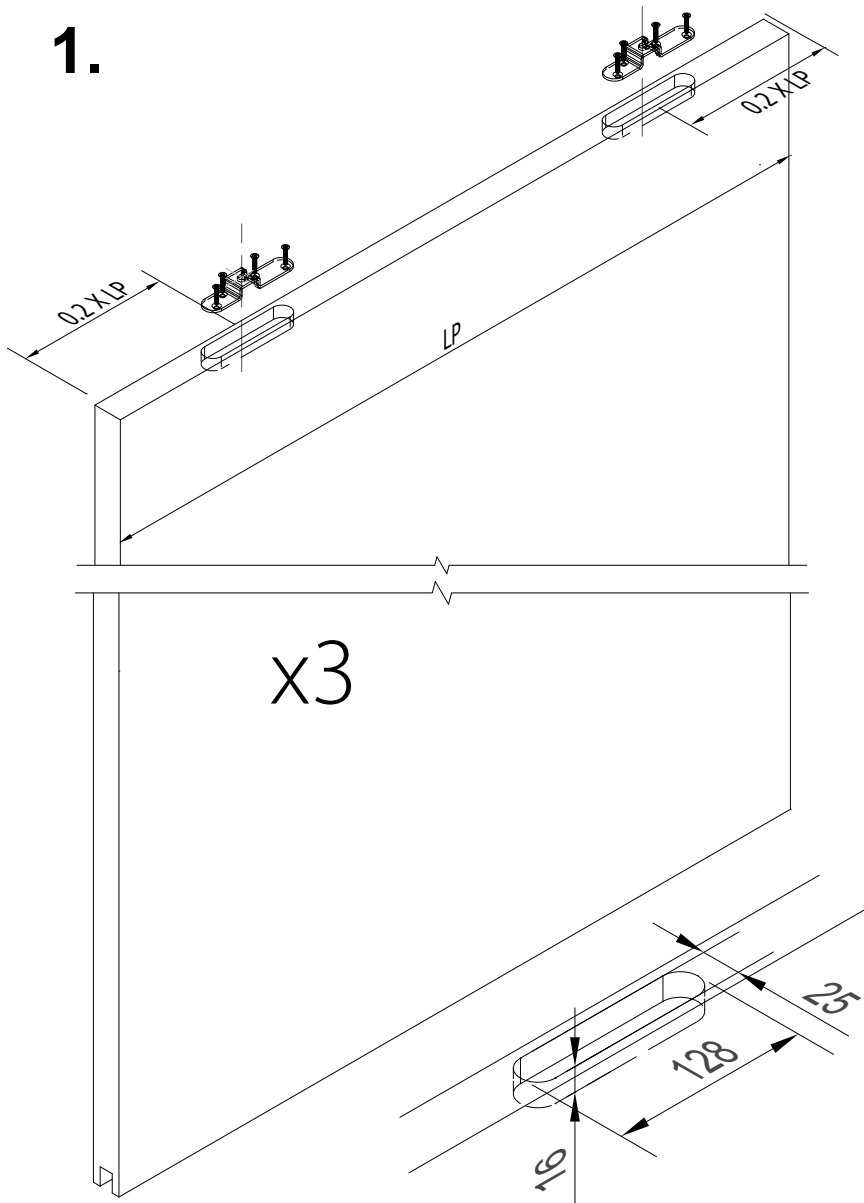
$700 \leq L_{p1} \leq 1500$   
 $27'' \leq L_{p1} \leq 59''$   
 $LR \leq 3000$   
 $LR \leq 235''$



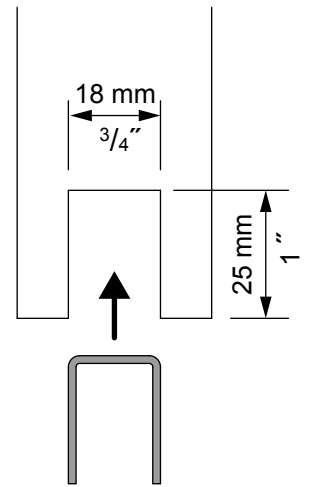
- LO** = Largeur de baie  
Opening width  
Öffnungsbreite  
Ancho de luz
- Lp** = Largeur panneaux  
Door width  
Schiebetürbreite  
Ancho de panel
- LR** = Longueur de rails  
Length of tracks  
Länge von Laufshienen  
Longitud de los perfiles
- R** = Recouvrement  
Door overlap  
Türübershneidung  
Recubrimiento
- P** = Poignée baton  
Sliding door handle  
Schiebetürgriffe  
Tirador

PRÉPARATION DES PANNEAUX - PANELS PREPARATION  
 VORBEREITUNG DER FLÜGEL - PREPARACIÓN DE LAS HOJAS

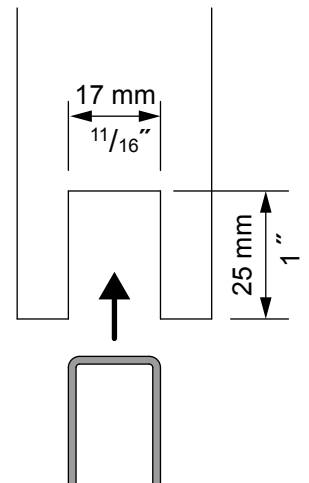
1.



1109 A

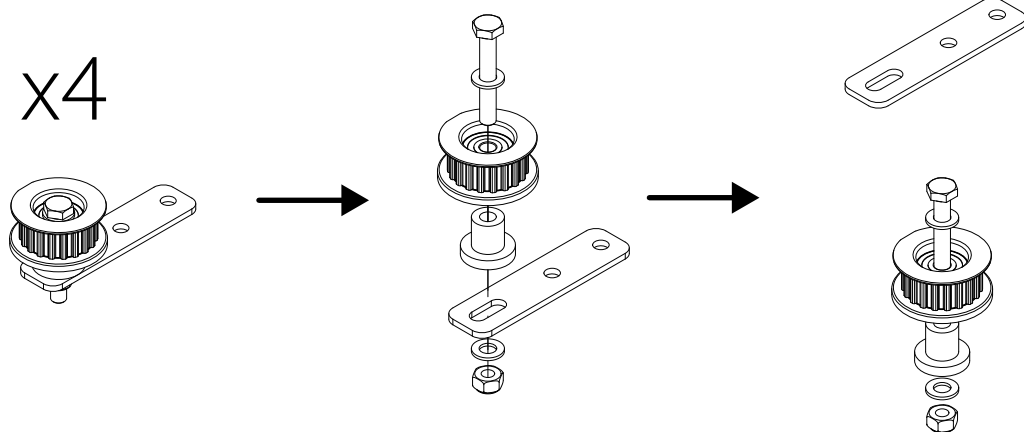


1109



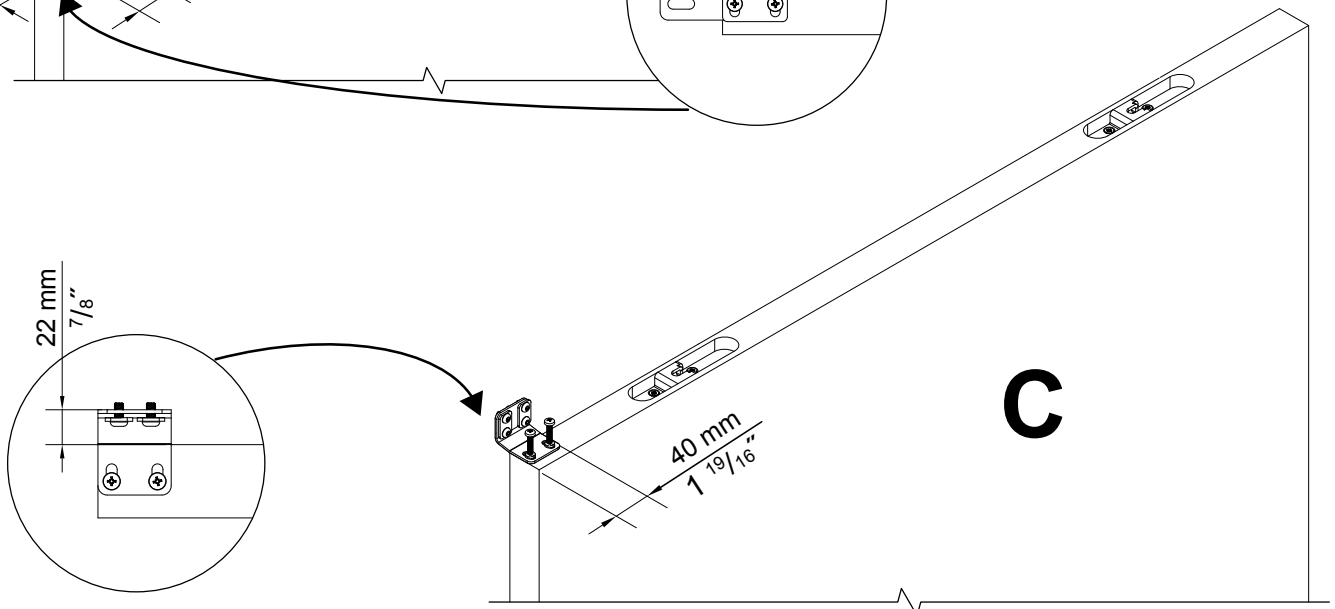
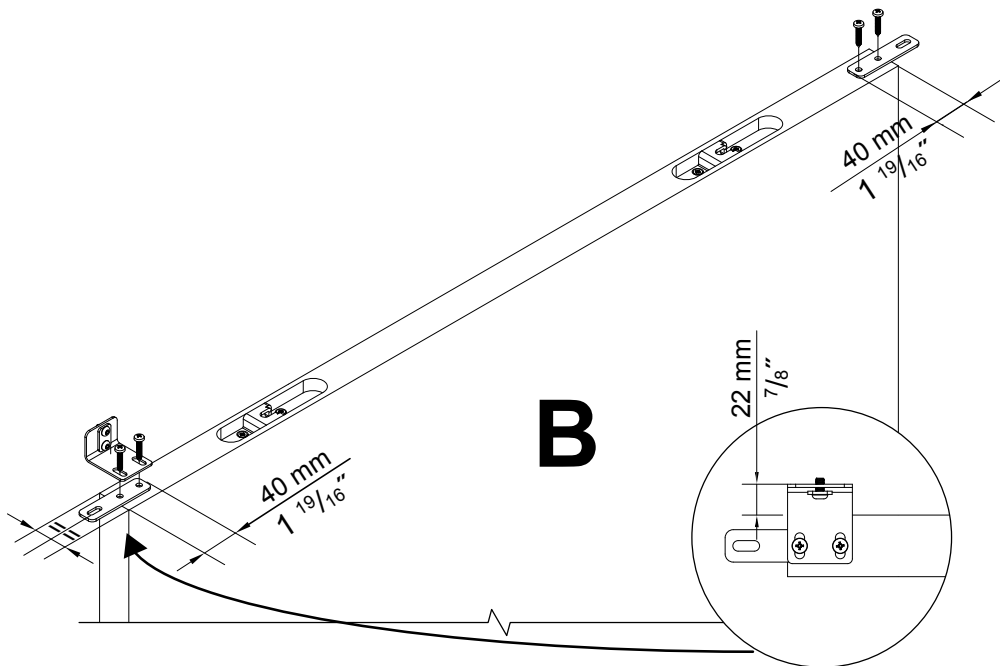
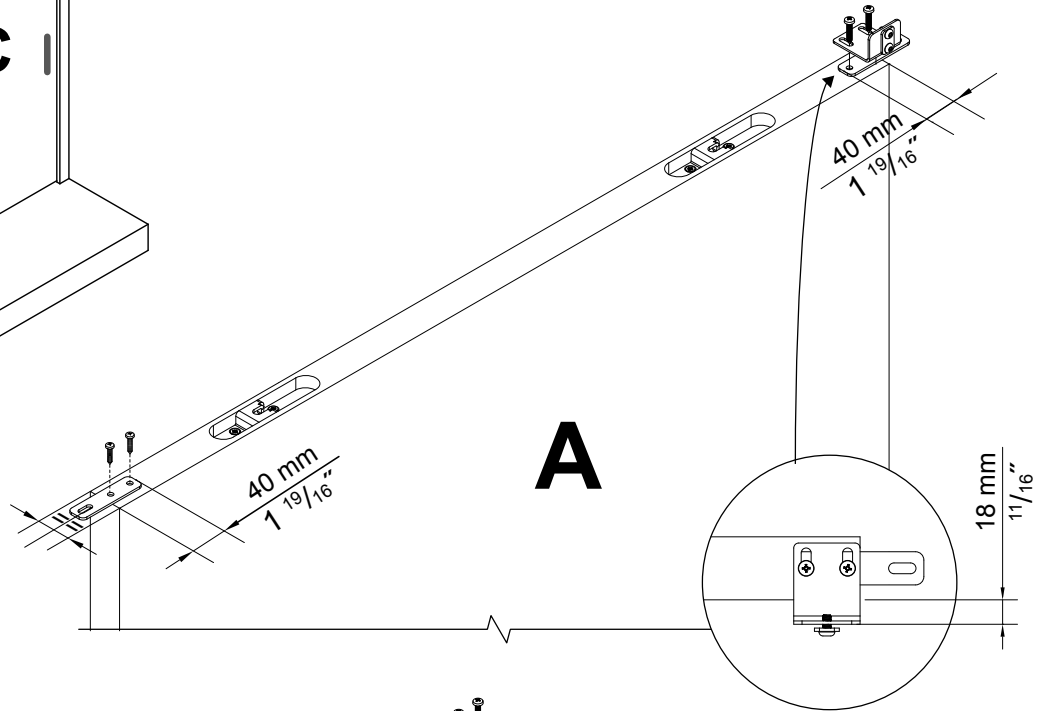
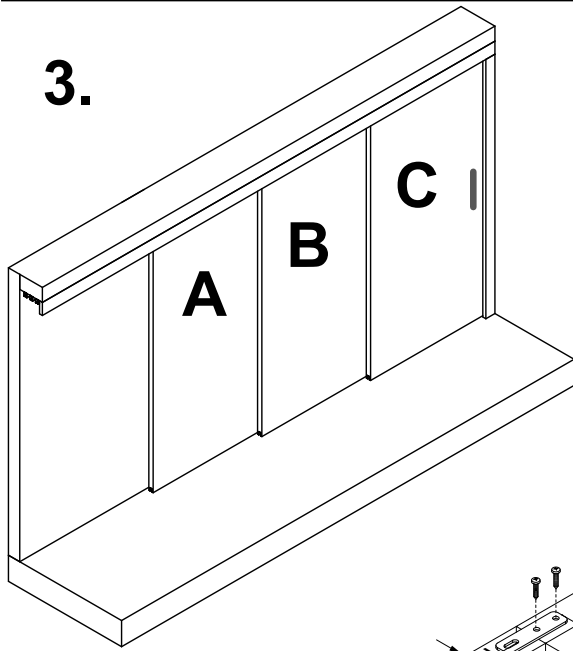
2.

x4

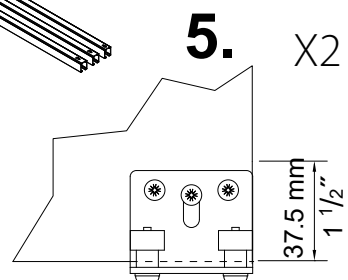
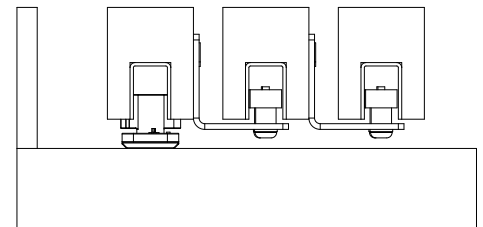
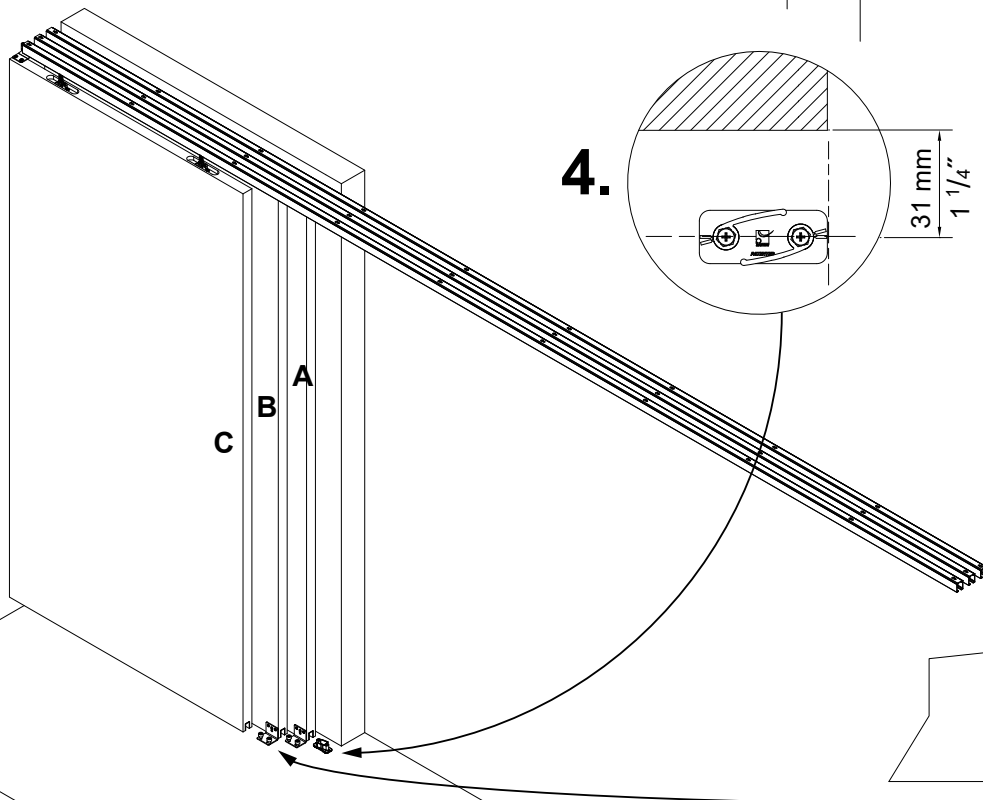
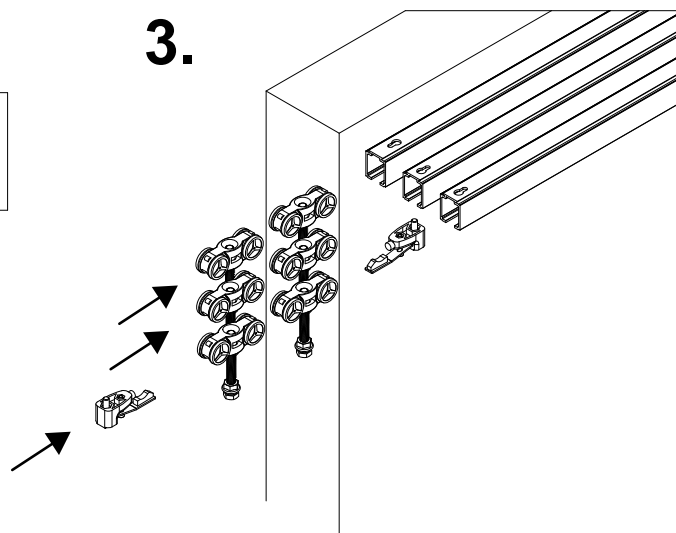
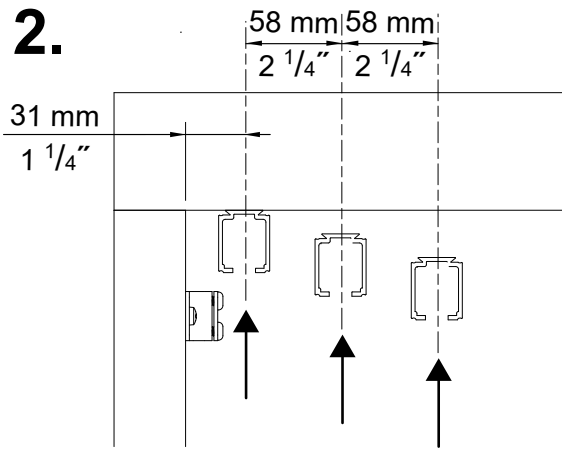
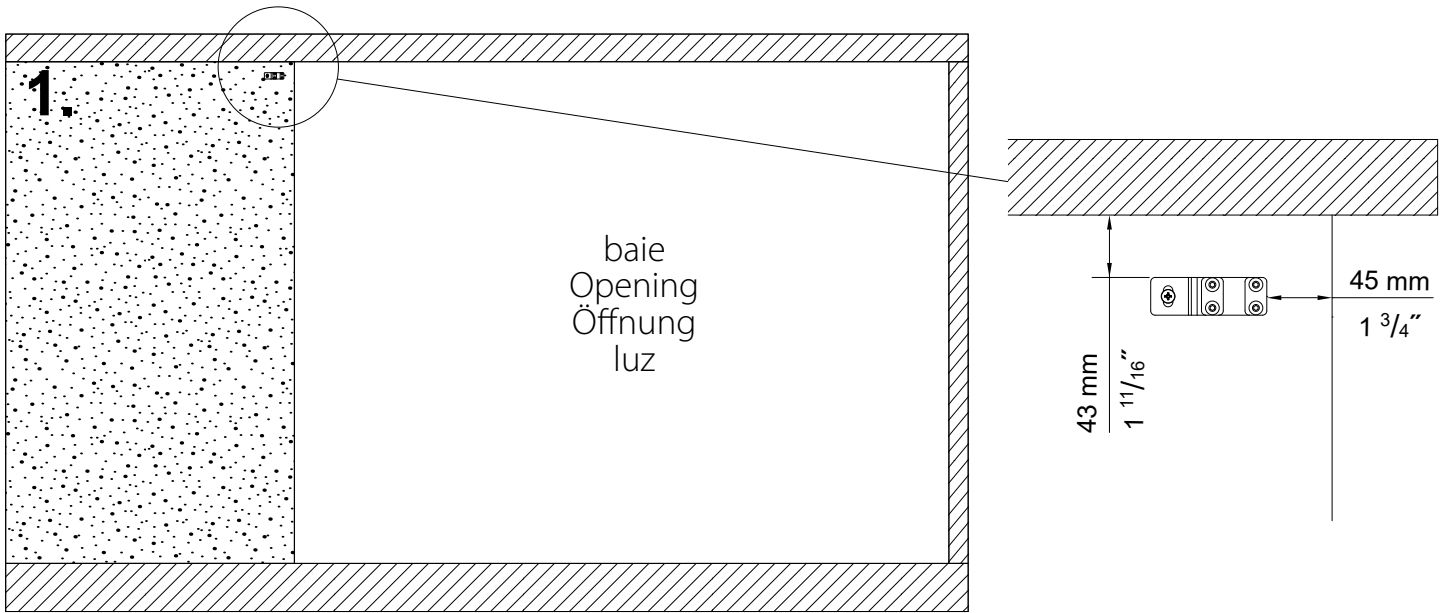


PRÉPARATION DES PANNEAUX - PANELS PREPARATION  
 VORBEREITUNG DER FLÜGEL - PREPARACIÓN DE LAS HOJAS

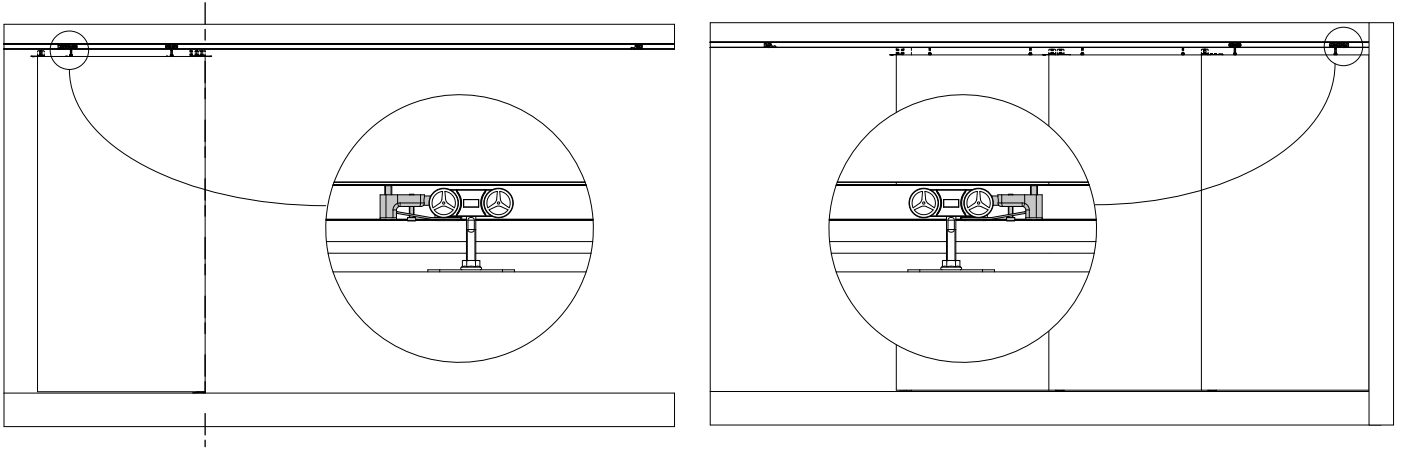
3.



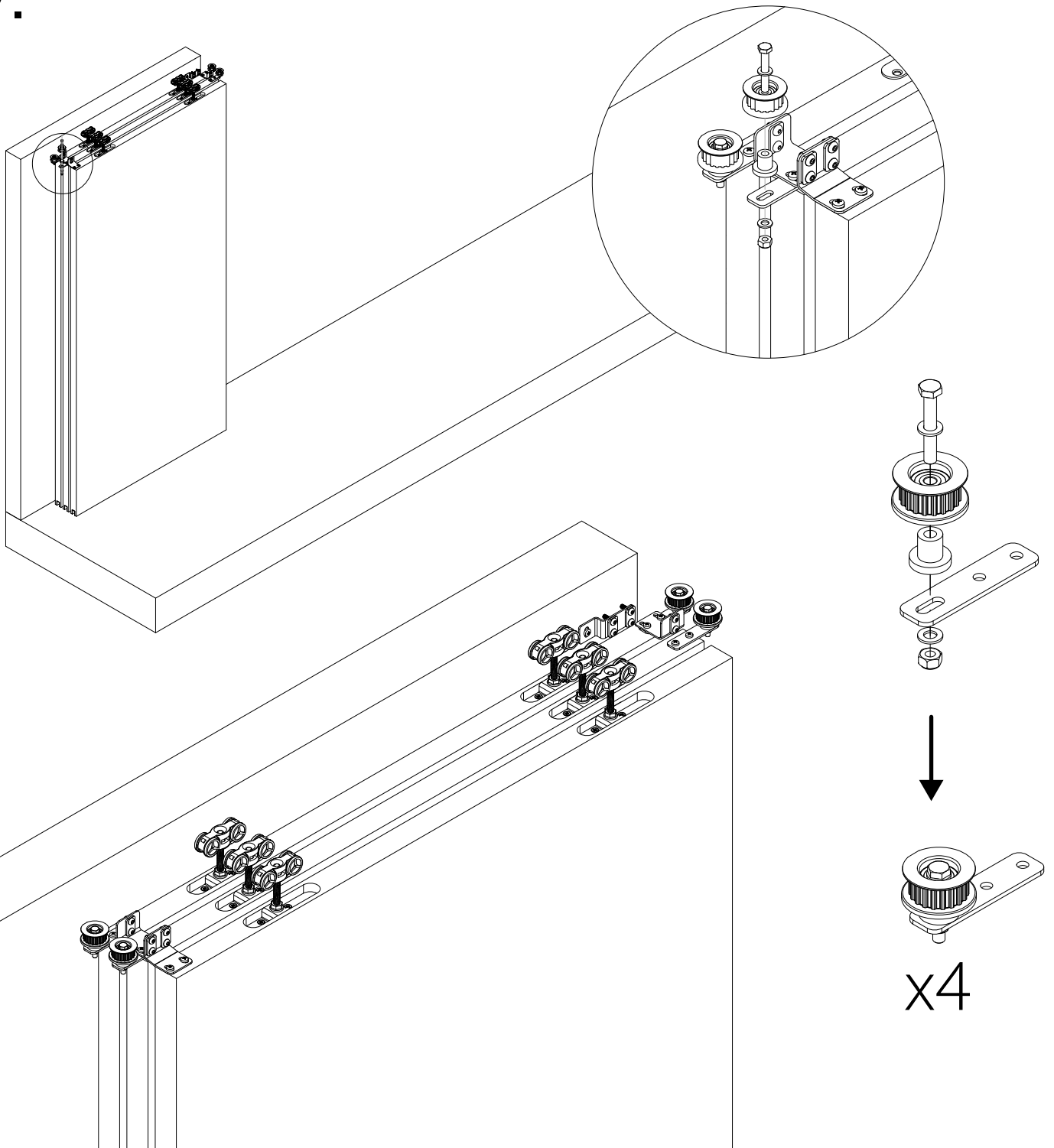
# MONTAGE - INSTALLATION - MONTAJE



6.



7.



8.

