



## DIMENSIONS DE PANNEAUX / PANELS DIMENSIONS / PANEELMASSEN

**H** = Hauteur de baie / Opening height / Öffnungshöhe

**L** = Largeur de baie / Opening width / Öffnungsbreite

**e** = Epaisseur des panneaux / Panel thickness / Flügelstärke

**e = 19 mm**

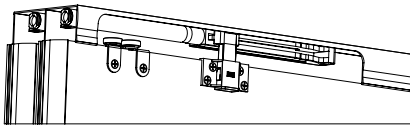
**Hp** = Hauteur des panneaux / Panel height / Flügelhöhe

**Hp = H - 35 ± 5 mm**



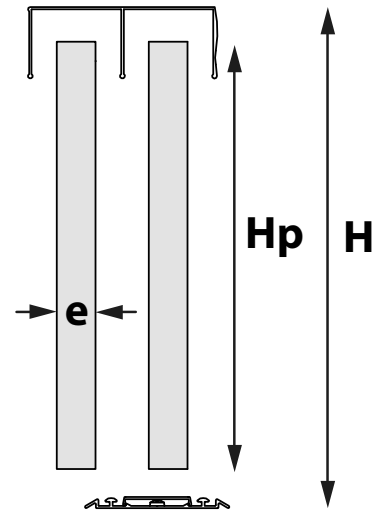
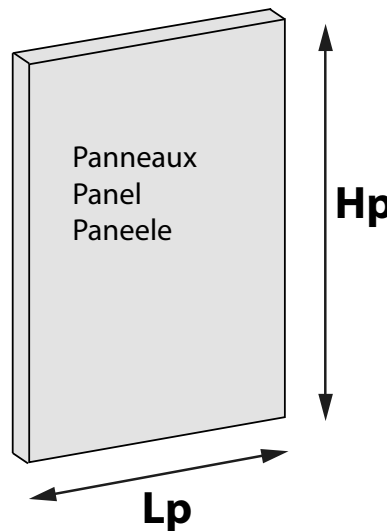
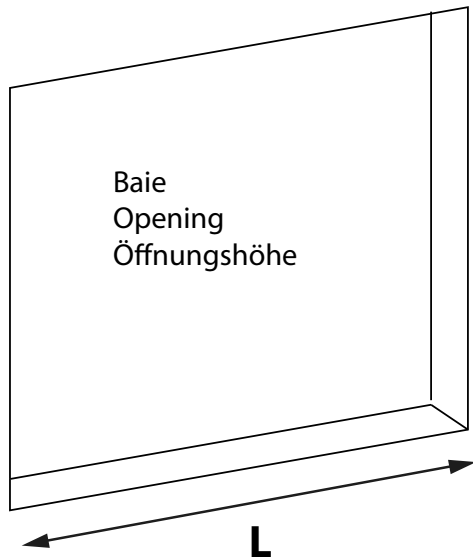
**OPTION**

Ref. 66AFP3

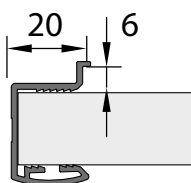


**Hp = H - 44 ± 1 mm**

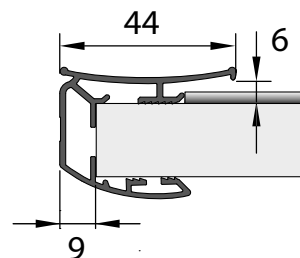
	2 panneaux 2 panels 2 paneele	3 panneaux 3 panels 3 paneele
	$Lp = \frac{L}{2} + 7$	$Lp = \frac{L}{3} + 10$
	$Lp = \frac{L}{2} + 4$	$Lp = \frac{L}{3} + 12$



Ref. 71E19/280



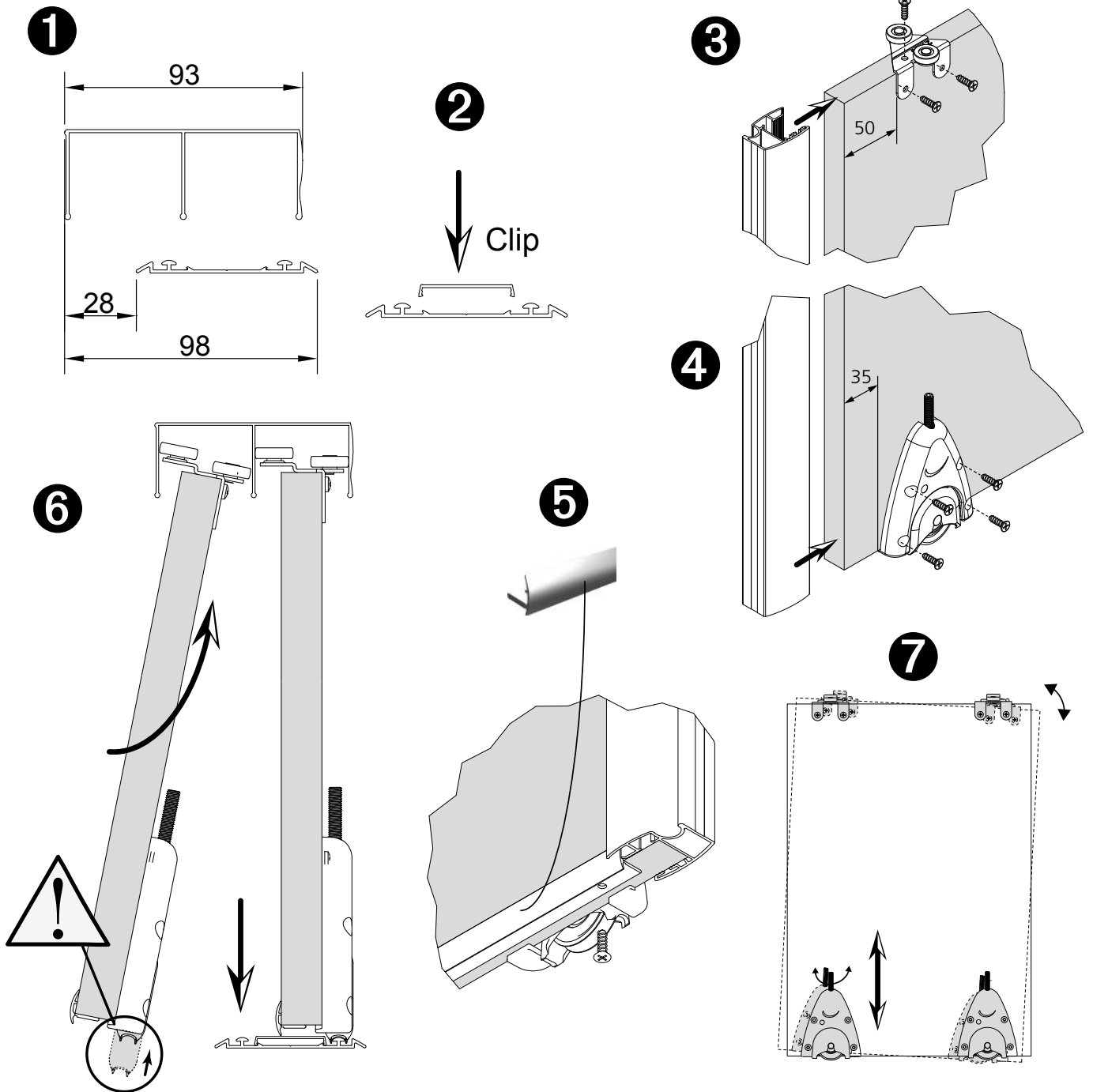
Ref. 71V19/280





NOTICE DE MONTAGE  
MONTAGEANLEITUNG  
INSTRUCTIONS FOR ASSEMBLY  
INSTRUCCIONES DE MONTAJE

# PICOSTAR 19



## OPTIONS

<p>Ref. <b>66 AFP3</b> Amortisseur ferme-porte Damper system Torschliesser - Dämper</p>	<p>Profil H pour séparation de panneaux</p>	<p>Brosse d'étanchéité Seal brushes Dichtungsbürsten</p>
	<p>Ref. <b>61H/180A</b> x1</p> <p>Ref. <b>61H/180AM</b> x1</p> <p>x16</p> <p>x12</p>	<p>Ref. <b>63A5</b> (5 mm) <b>63A15</b> (15 mm) <b>63A20</b> (20 mm) <b>63A25</b> (25 mm)</p>