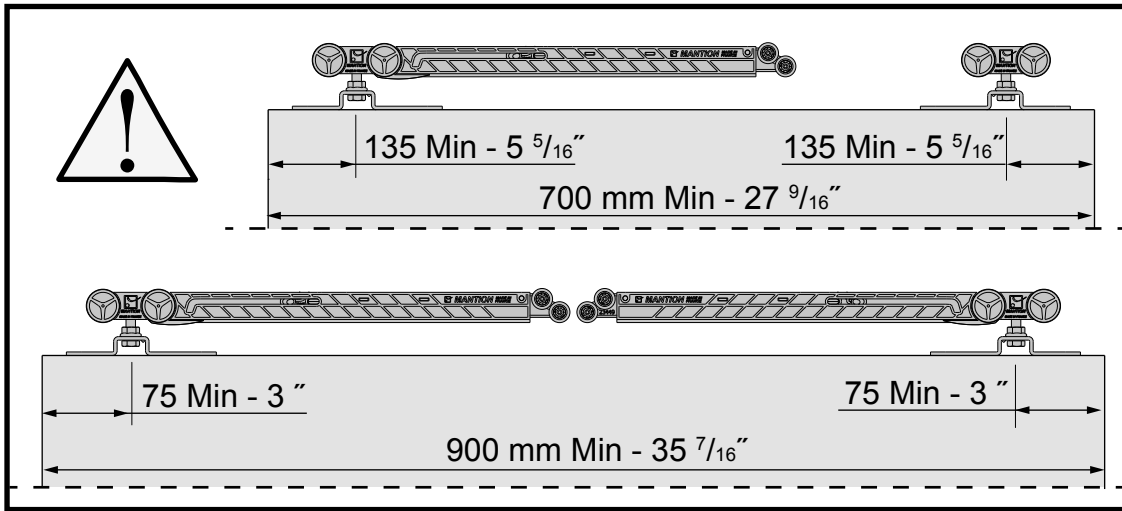




INSTRUCTIONS DE MONTAGE
 MONTAGEANLEITUNG
 INSTRUCTIONS FOR ASSEMBLY
 INSTRUCCIONES DE MONTAJE

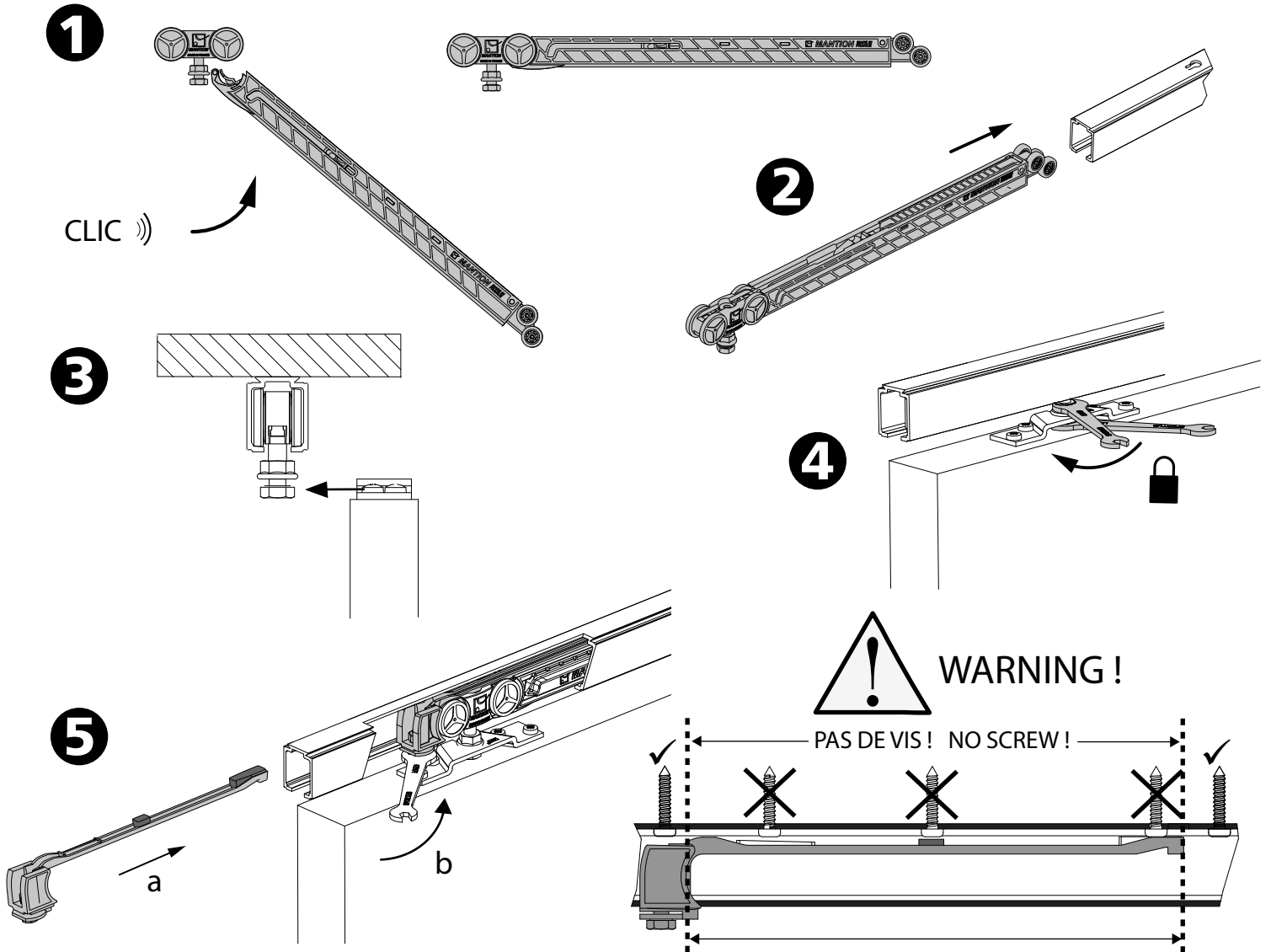


M67



Poids de la porte Gewicht der Tür Weight of the door
60-->80 KG 135 -->180 lbs.
Temperature d'utilisation Betriebstemperatur Operating temperature
10°C--> 50°C 50°F-->122°F
Temperature de stockage Lagertemperatur Storage temperature
-20°C--> 80°C -4°F-->176°F

Fixation au plafond - Top fixing - Deckenbefestigung

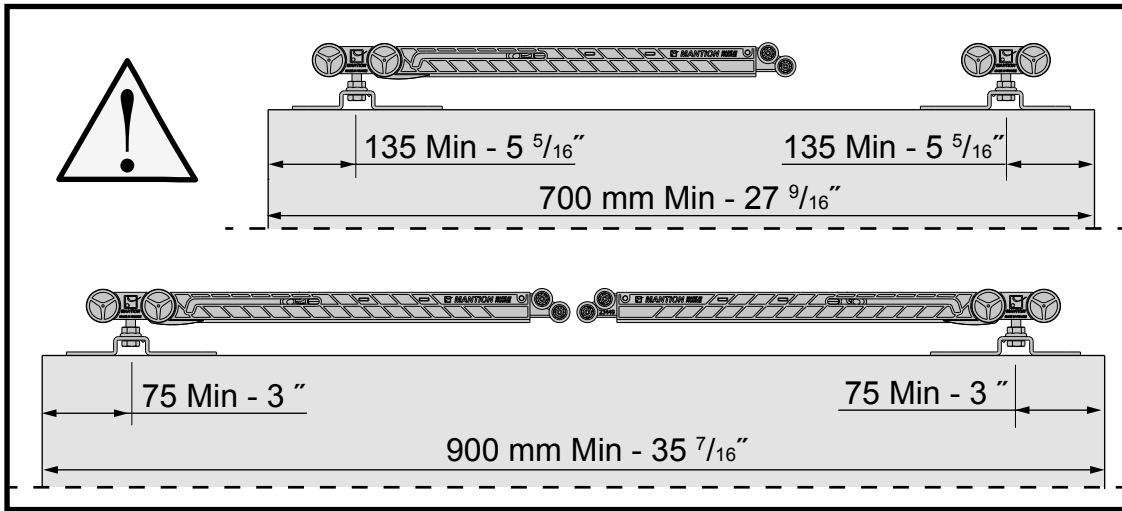




INSTRUCTIONS DE MONTAGE
 MONTAGEANLEITUNG
 INSTRUCTIONS FOR ASSEMBLY
 INSTRUCCIONES DE MONTAJE



M67



Poids de la porte Gewicht der Tür Weight of the door
60-->80 KG 135 -->180 lbs.
Temperature d'utilisation Betriebstemperatur Operating temperature
10°C--> 50°C 50°F-->122°F
Temperature de stockage Lagertemperatur Storage temperature
-20°C--> 80°C -4°F-->176°F

Fixation murale - Wall fixing - Wandbefestigung

