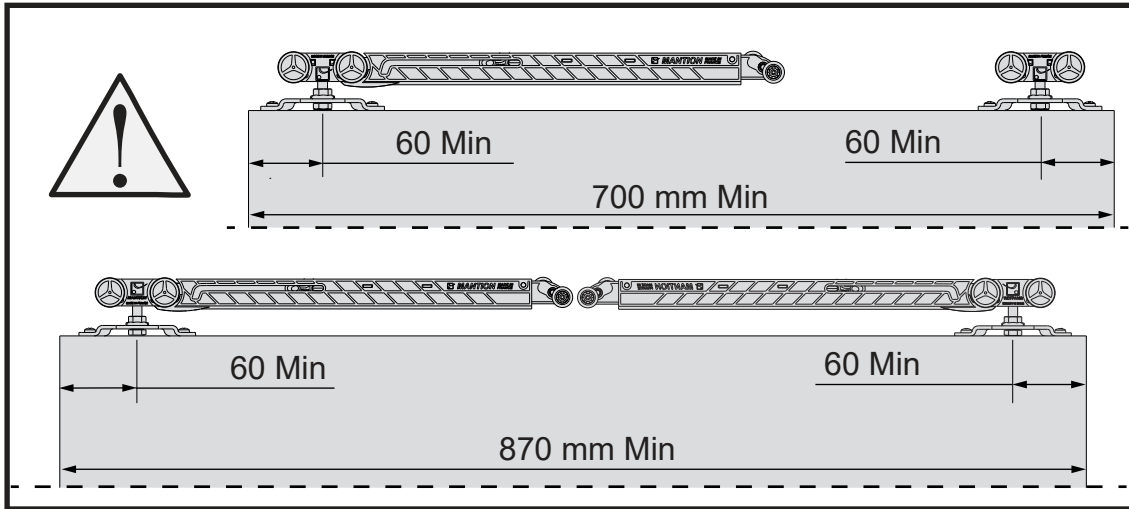




INSTRUCTIONS DE MONTAGE
MONTAGEANLEITUNG
INSTRUCTIONS FOR ASSEMBLY
INSTRUCCIONES DE MONTAJE



SAF®
M67S



Poids de la porte
Gewicht der Tür
Weight of the door

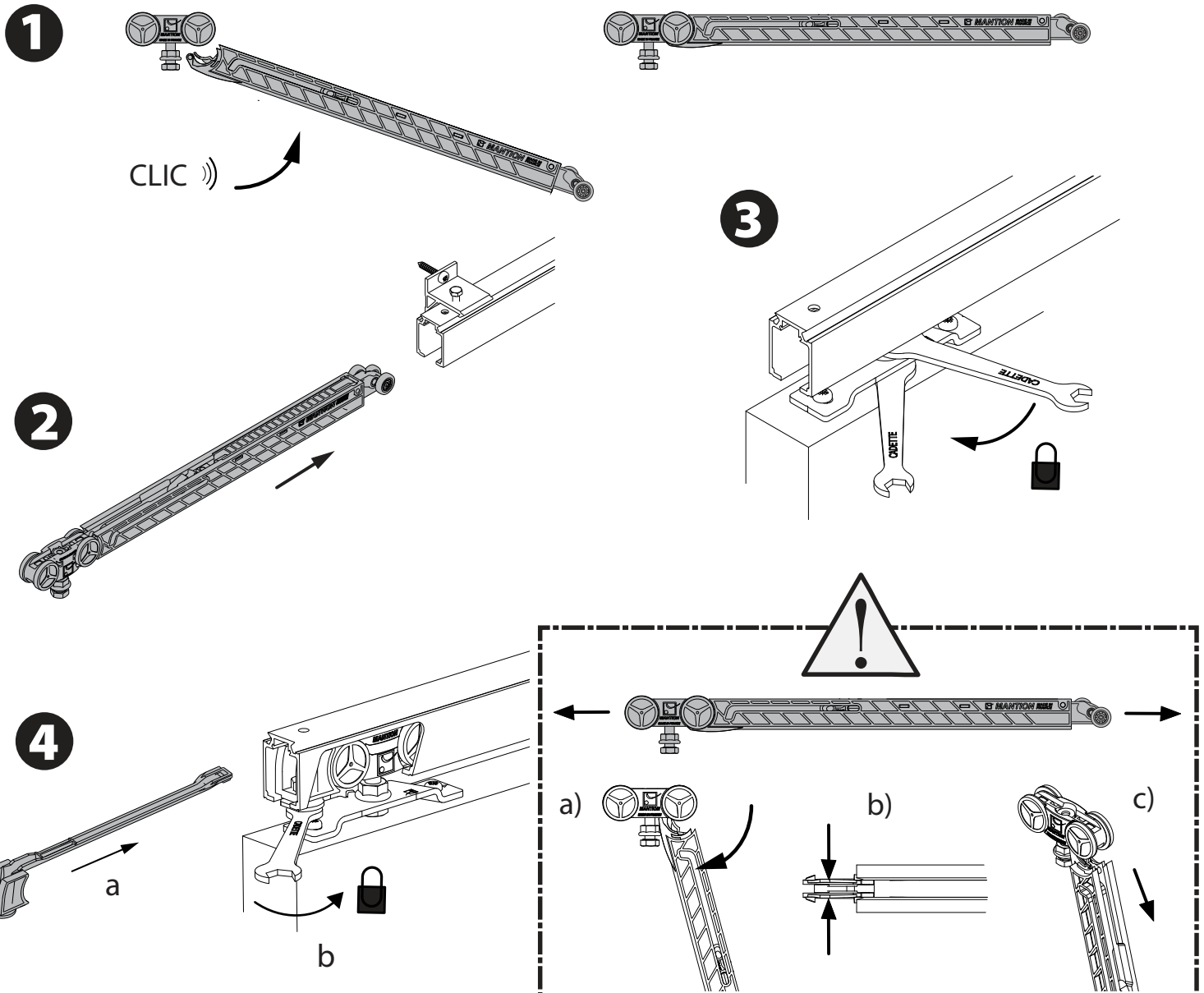
61-80 KG

Temperature d'utilisation
Betriebstemperatur
Operating temperature

10°C--> 50°C

Temperature de stockage
Lagertemperatur
Storage temperature

-20°C--> 80°C

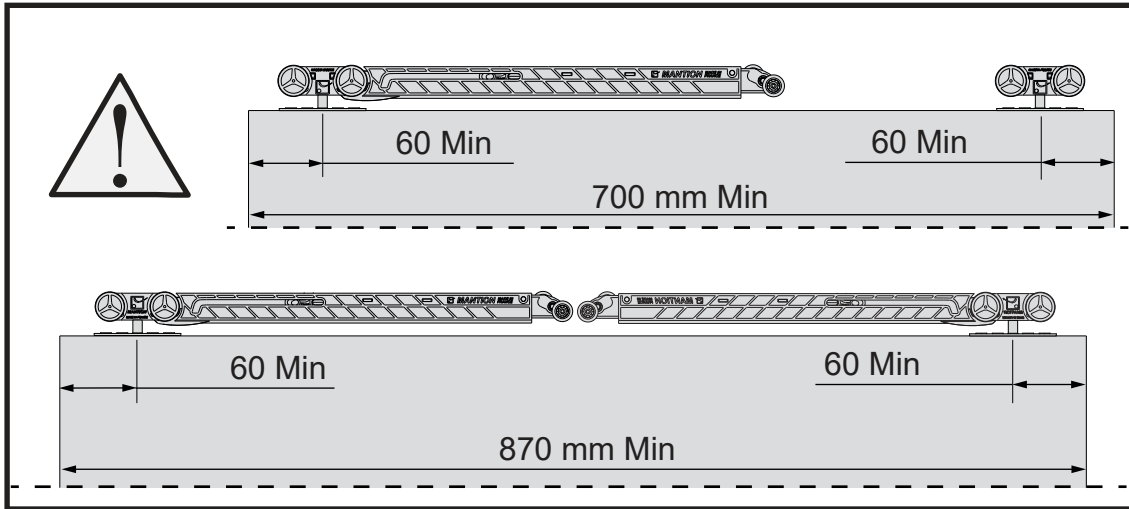




INSTRUCTIONS DE MONTAGE
MONTAGEANLEITUNG
INSTRUCTIONS FOR ASSEMBLY
INSTRUCCIONES DE MONTAJE



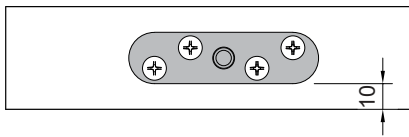
SAF®-SLIM
M67S



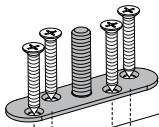
Poids de la porte Gewicht der Tür Weight of the door
61-80 KG
Temperature d'utilisation Betriebstemperatur Operating temperature
10°C--> 50°C
Temperature de stockage Lagertemperatur Storage temperature
-20°C--> 80°C

1

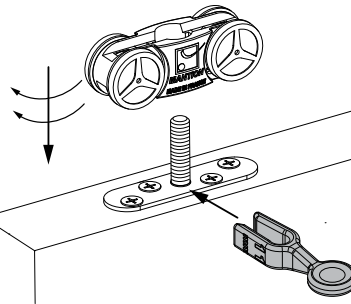
x2



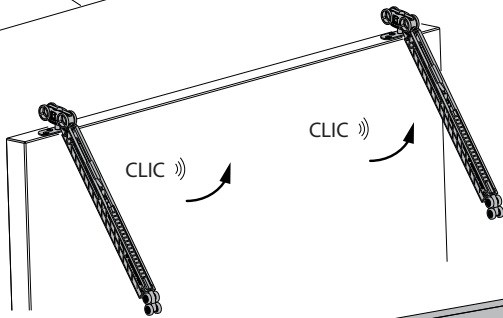
a)



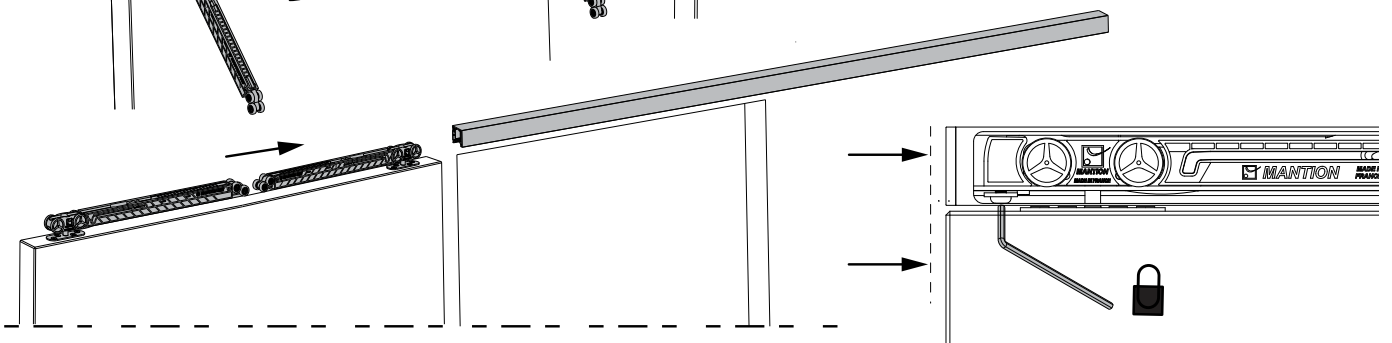
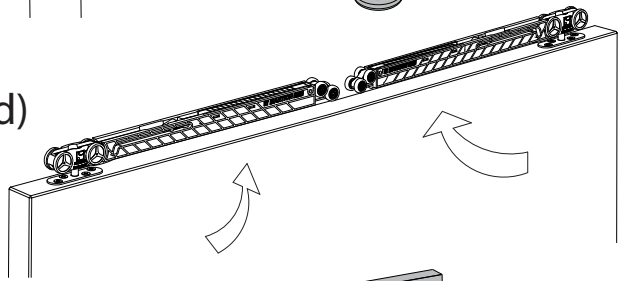
b)



c)



d)



2

x2

