



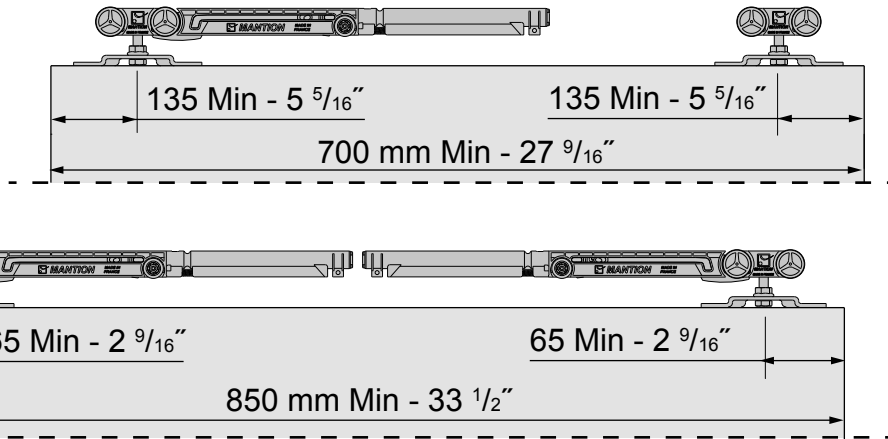
INSTRUCTIONS DE MONTAGE
MONTAGEANLEITUNG
INSTRUCTIONS FOR ASSEMBLY
INSTRUCCIONES DE MONTAJE



3 660720 111508



M66



Poids de la porte
Gewicht der Tür
Weight of the door

80 KG
180 lbs.

Temperature d'utilisation
Betriebstemperatur
Operating temperature

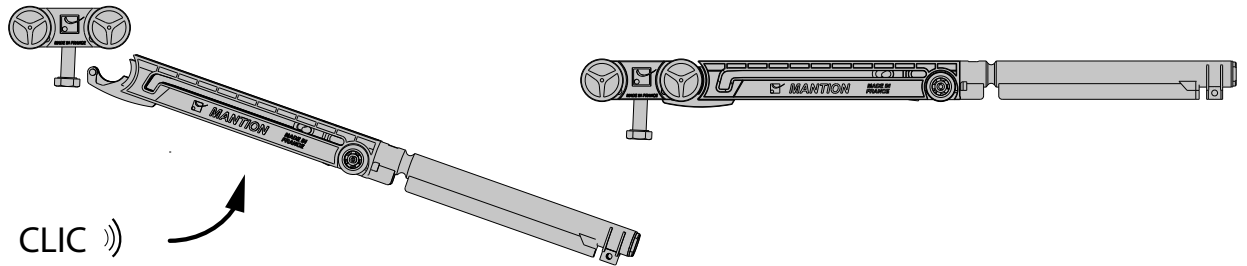
10°C--> 50°C
50°F-->122°F

Temperature de stockage
Lagertemperatur
Storage temperature

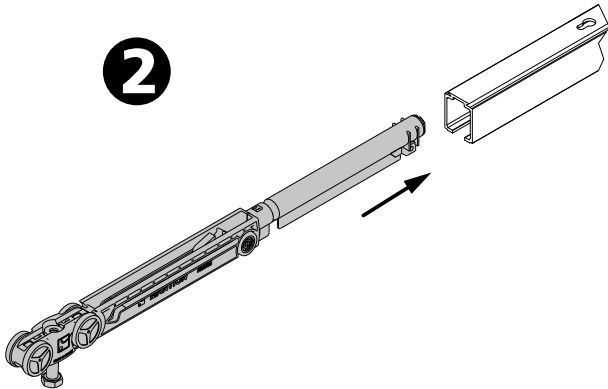
-20°C--> 80°C
-4°F-->176°F

Fixation au plafond - Top fixing - Deckenbefestigung

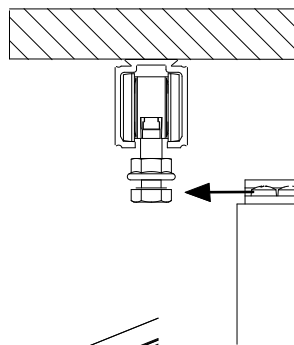
1



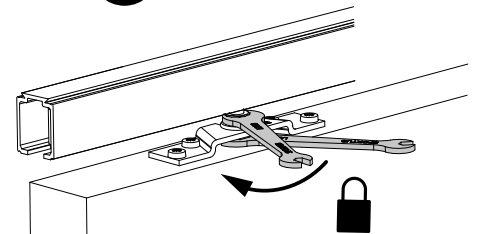
2



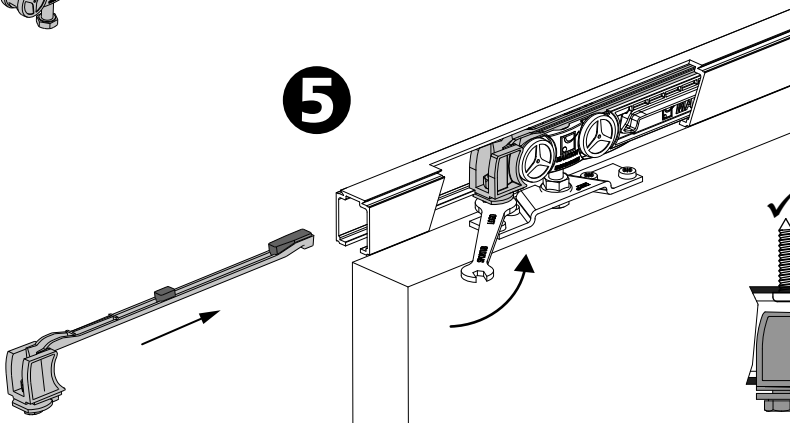
3



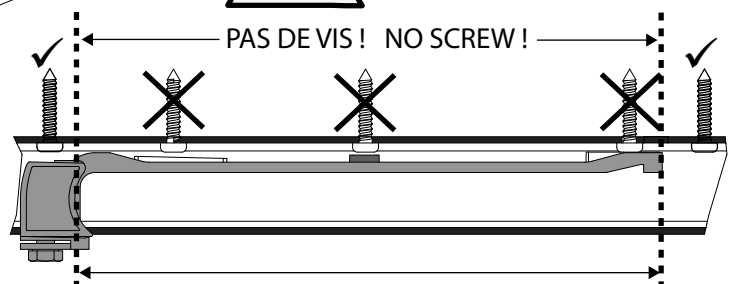
4



5



WARNING!



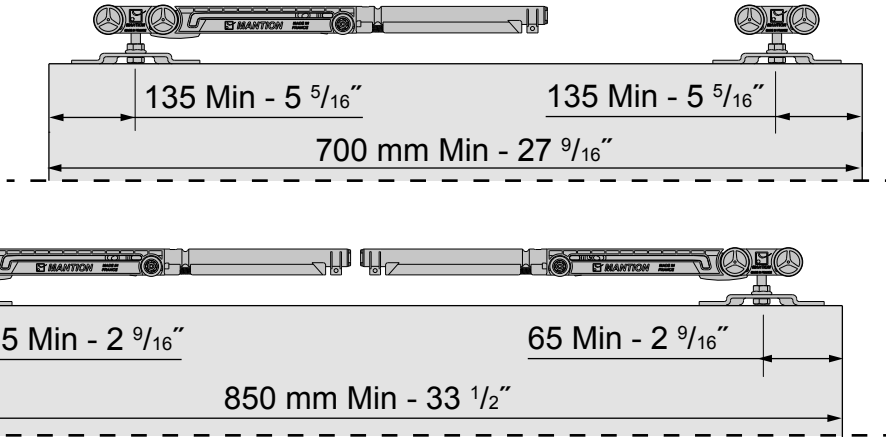
NE PAS METTRE DE VIS SUR TOUTE LA LONGUEUR DU DECLENCHEUR
SEULEMENT UNE AVANT ET APRES
DO NOT PUT ANY SCREW ON THE WHOLE LENGTH OF THE HOOK !!!
ONLY ONE BEFORE AND ONE AFTER



INSTRUCTIONS DE MONTAGE
 MONTAGEANLEITUNG
 INSTRUCTIONS FOR ASSEMBLY
 INSTRUCCIONES DE MONTAJE



M66



Poids de la porte
 Gewicht der Tür
 Weight of the door

80 KG
 180 lbs.

Temperature d'utilisation
 Betriebstemperatur
 Operating temperature

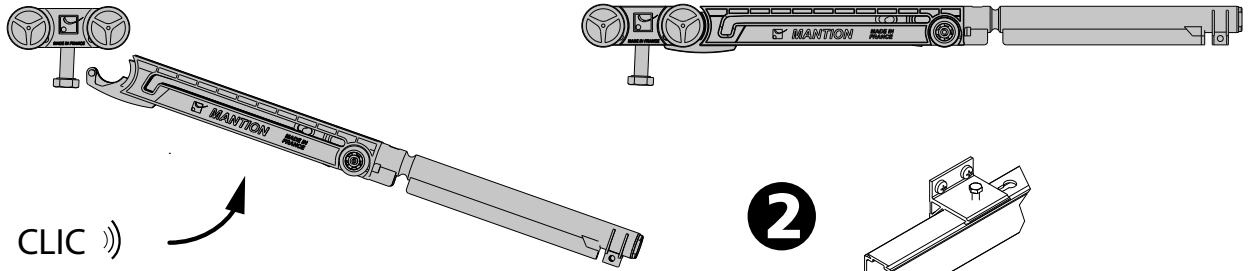
10°C--> 50°C
 50°F-->122°F

Temperature de stockage
 Lagertemperatur
 Storage temperature

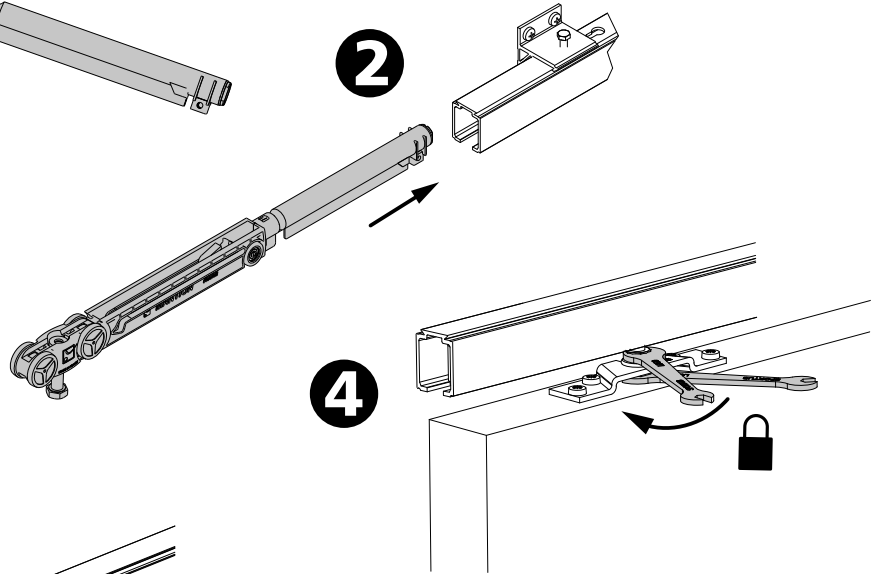
-20°C--> 80°C
 -4°F-->176°F

Fixation murale - Wall fixing - Wandbefestigung

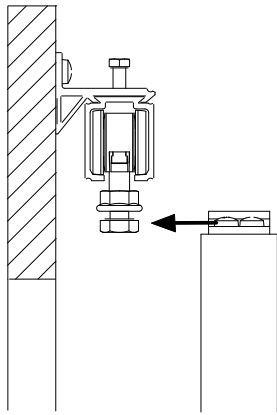
1



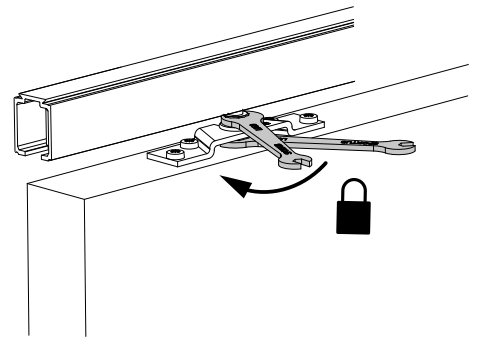
2



3



4



5

