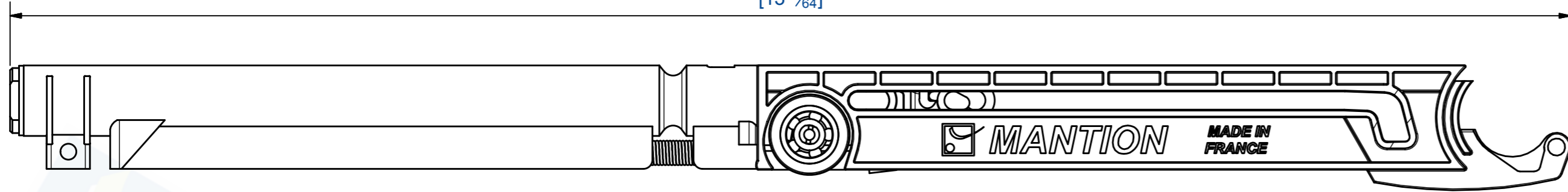
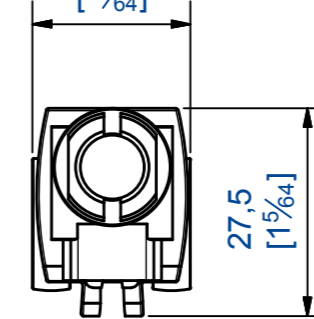


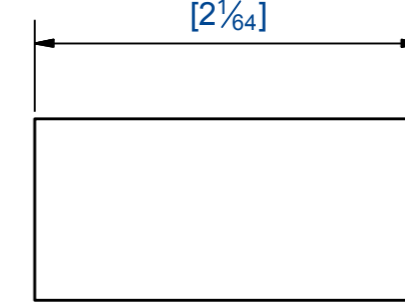
343
[13³¹/₆₄]



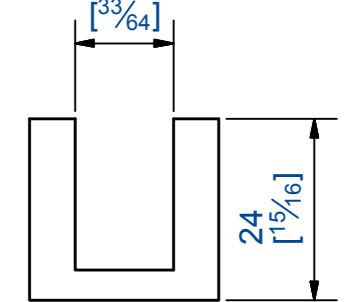
20,9
[5³/₆₄]



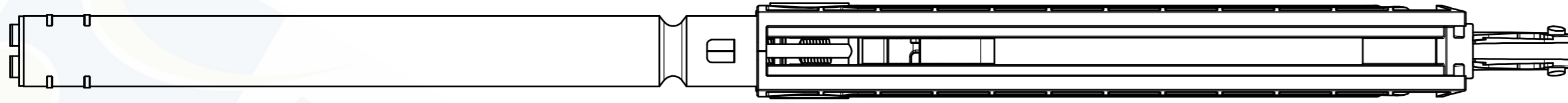
51
[2¹/₆₄]



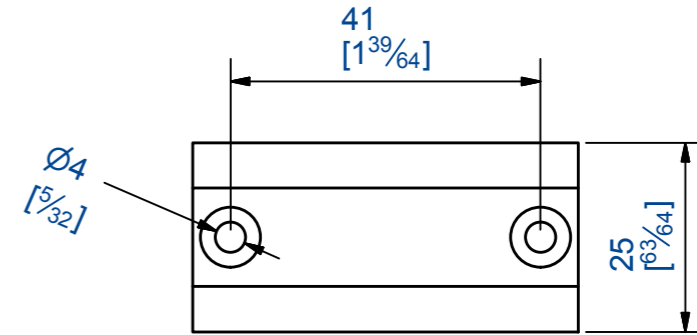
13
[3³/₆₄]



27,5
[1¹/₆₄]

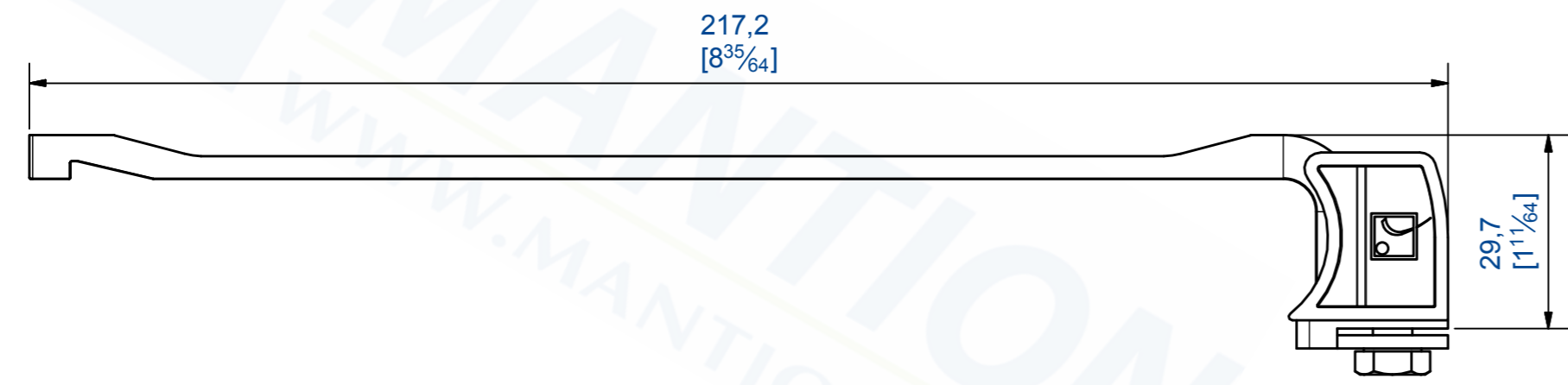


41
[1³⁹/₆₄]

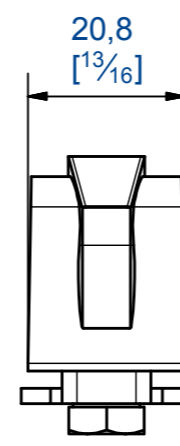


25
[6³/₆₄]

217,2
[8³⁵/₆₄]



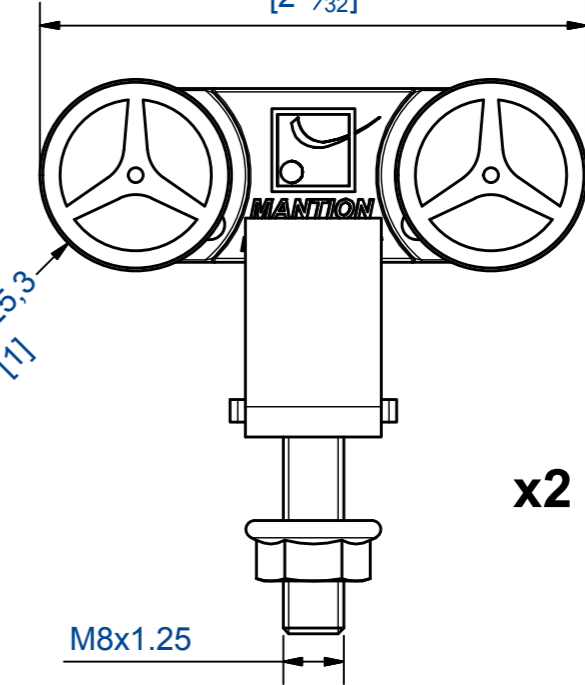
20,8
[1³/₁₆]



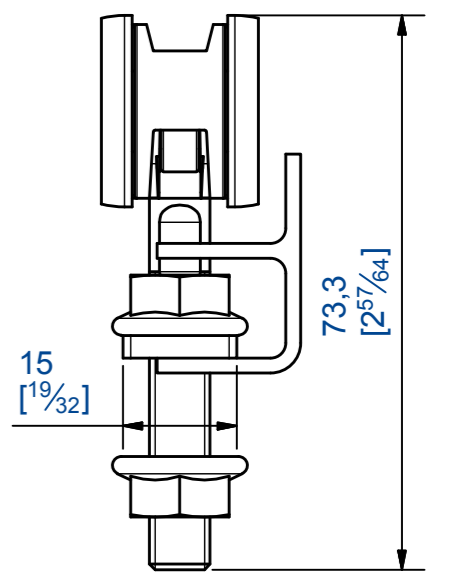
29,7
[1¹¹/₆₄]



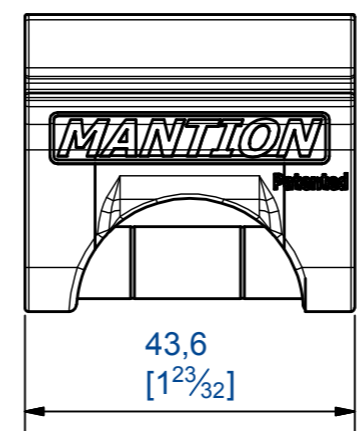
72,3
[2²⁷/₃₂]



15
[1⁹/₃₂]

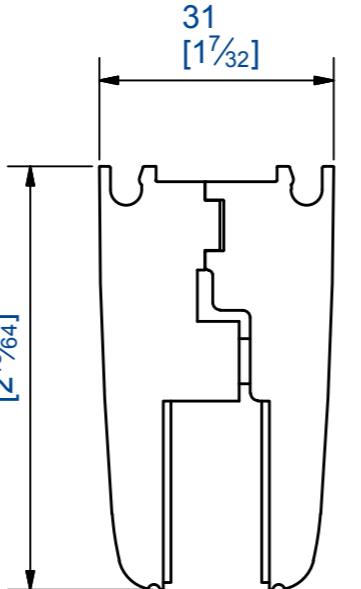


43,6
[1²³/₃₂]

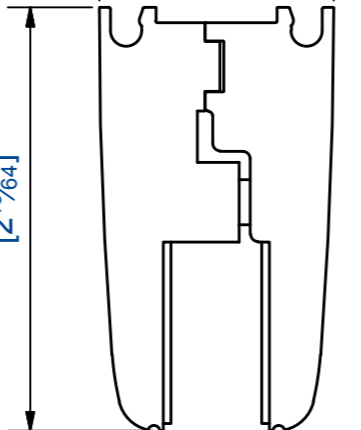


150
[5²⁹/₃₂]

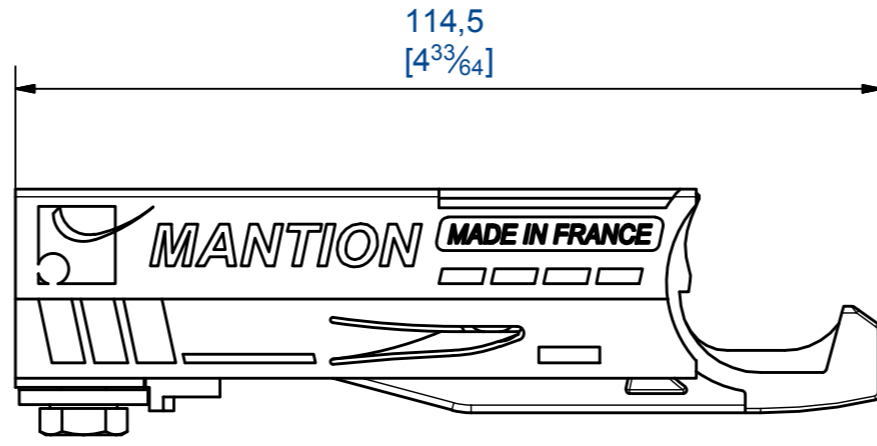
31
[1⁷/₃₂]



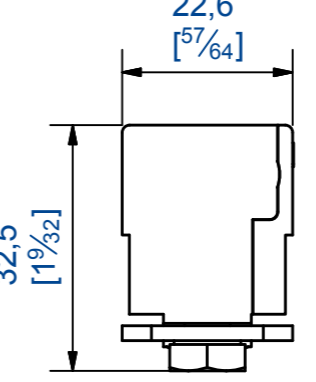
56
[2¹³/₆₄]



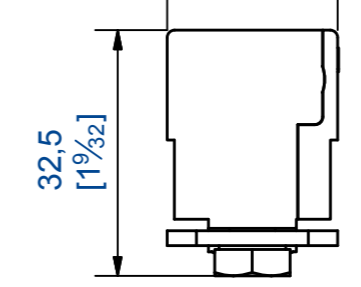
114,5
[4³³/₆₄]



22,6
[5⁷/₆₄]



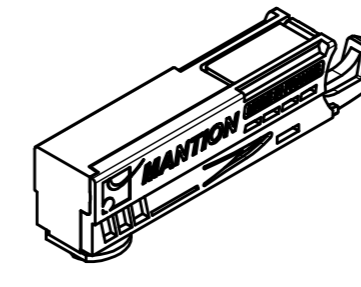
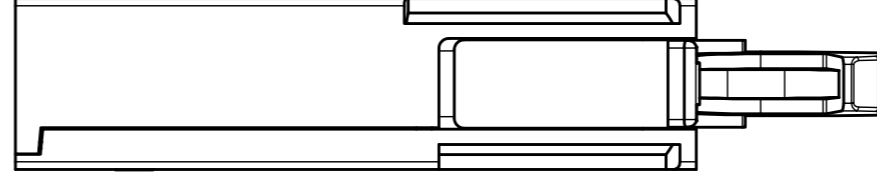
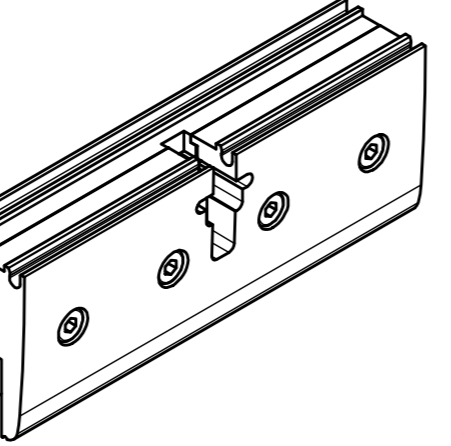
32,5
[1⁹/₃₂]



- Garniture pour une porte coulissante verre de 12 mm ; poids 80 Kg MAX
Contenu :
- 2 montures (mouvement sur roulements à billes)
 - 2 pinces pour verre épaisseur 12 mm
 - 1 butée réf. 11213S80
 - 1 ferme porte M66
 - 1 guide réf. 1112-4
 - 1 niveau à bulle "Buly®"

- Gear set for one only 12 mm thick glass sliding door; MAX load = 80 Kg
Content :
- 2 hangers (ball bearings movement)
 - 2 clamps for 12 mm thick glass
 - 1 stopper item n° 11213S80
 - 1 damper closer item M66
 - 1 guide item n° 1112-4
 - 1 water level "Buly®"

x2



Référence Item Nr: **GA4203**

Rail associé Combined track: **11108**