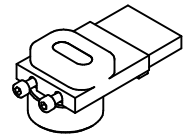




# PIVOT FERME PORTE INTEGRATED DOOR CLOSER 25312DT51 / 25312GT51



NOTICE DE MONTAGE : NM 25312-51

Dimensions possibles de la porte / possible door size :

Hauteur / height : 2000 mm MAX

Largeur / width : 1000 mm MAX

Cadre / frame : tube □ 40x40 mm MIN

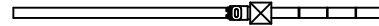
Poids de la porte / door weight : 80 Kg MAX

Force de fermeture / torque : 15,7 N.m

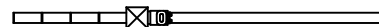
Angle d'ouverture / opening angle : 180° MAX

Sens d'ouverture / opening side :

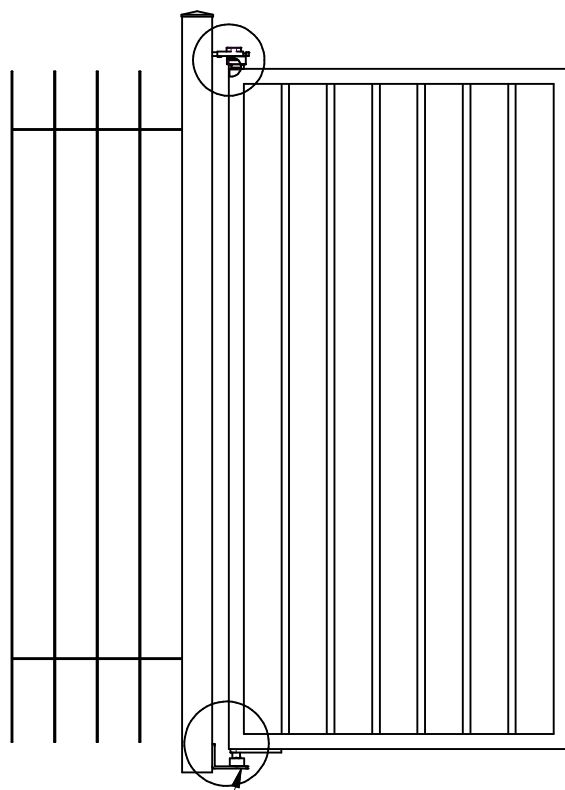
**DROITE / RIGHT**



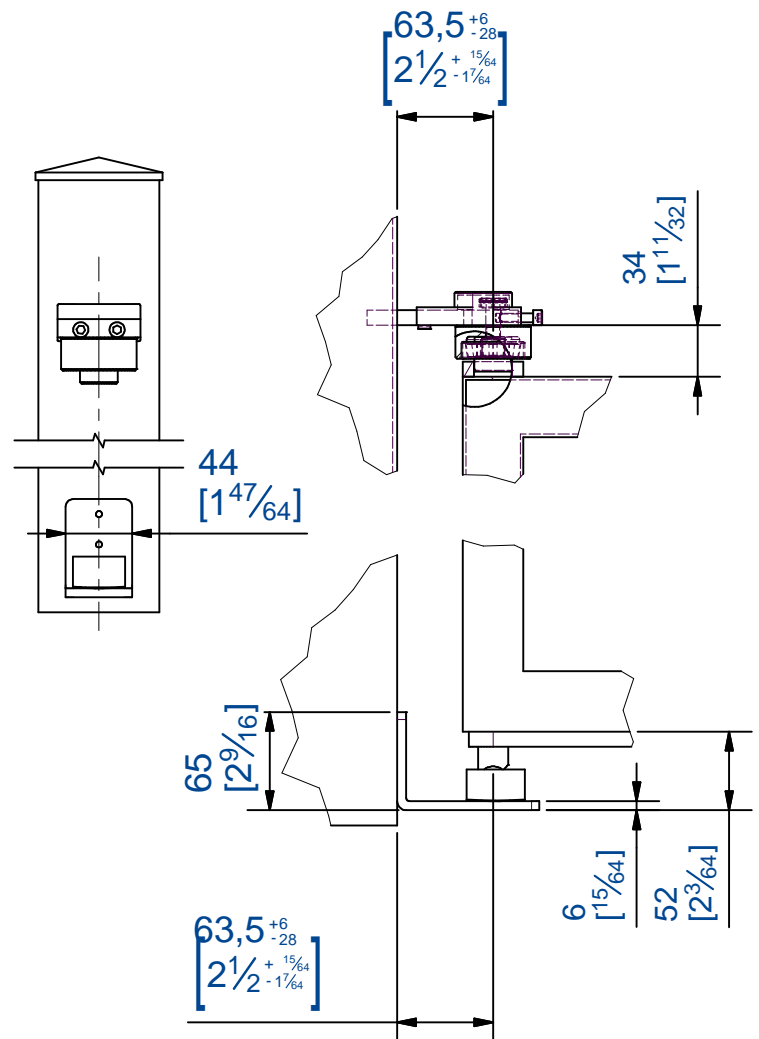
**GAUCHE / LEFT**



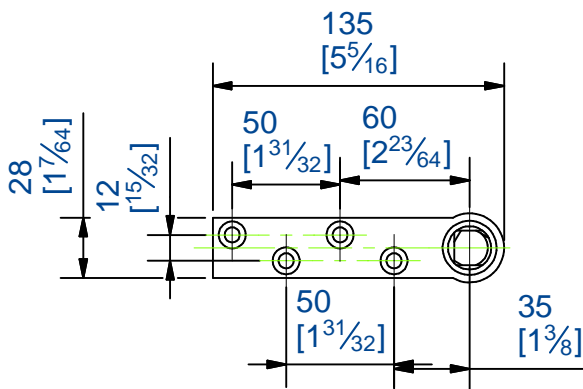
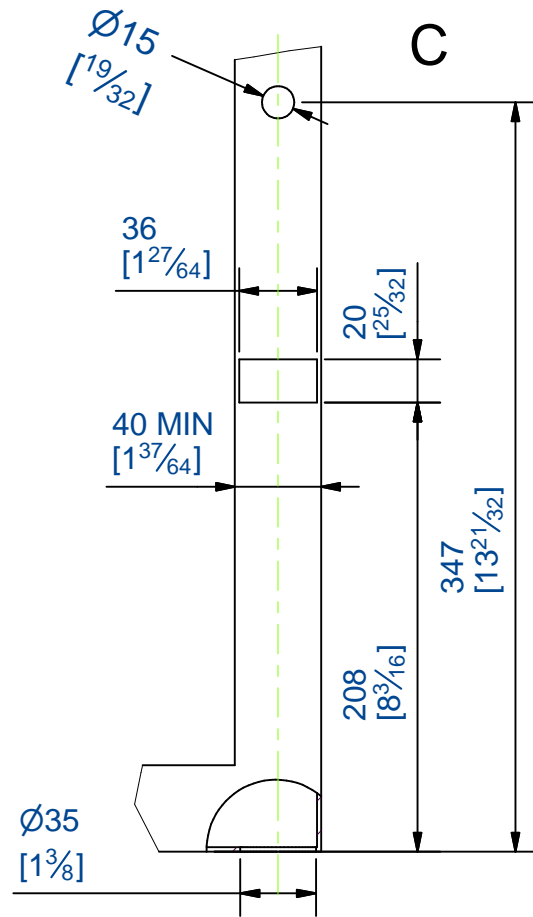
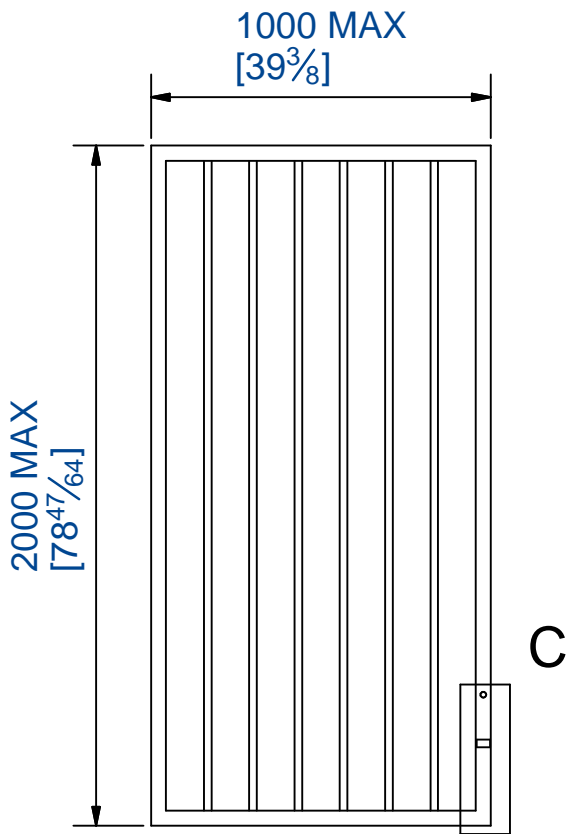
## Vue d'ensemble et cotes d'implantation / Overview and mounting dimensions



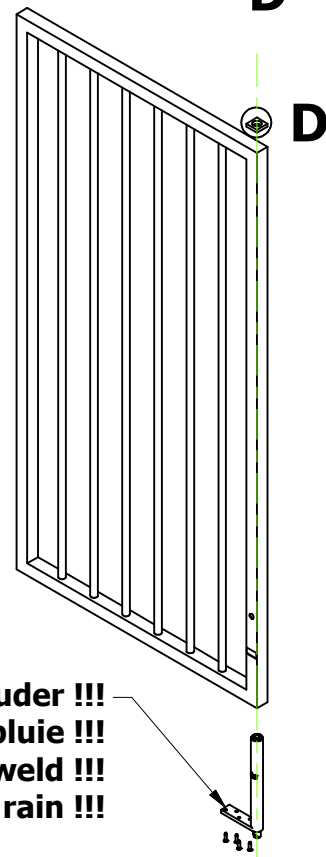
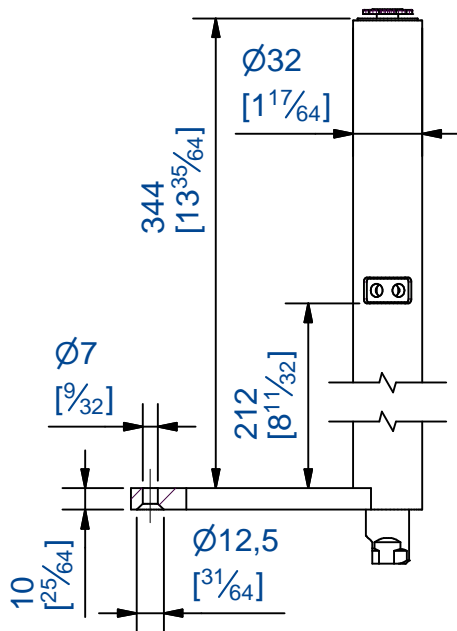
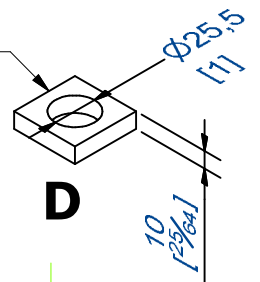
25312DT/GT



# Fabrication du panneau / construction of the door

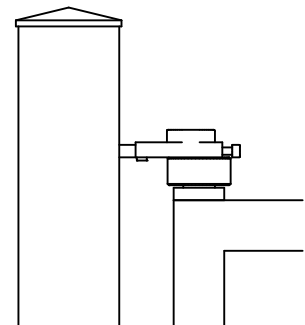
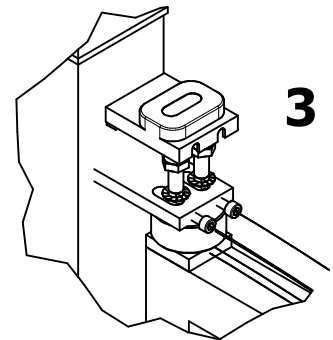
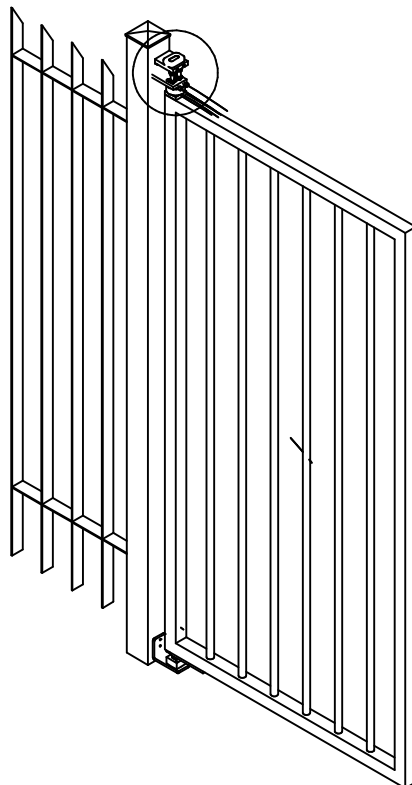
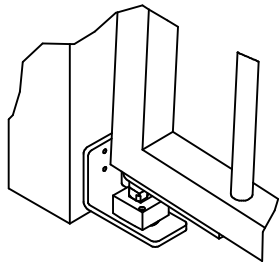
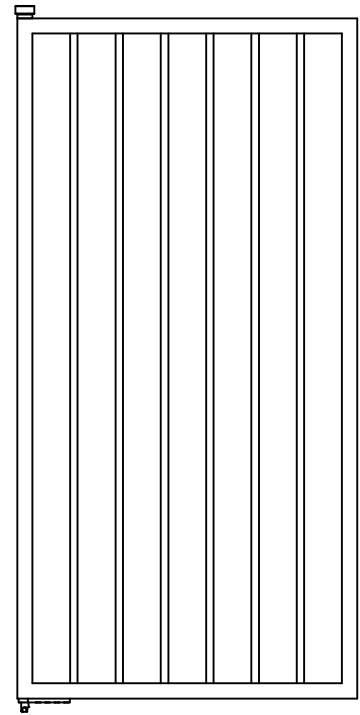
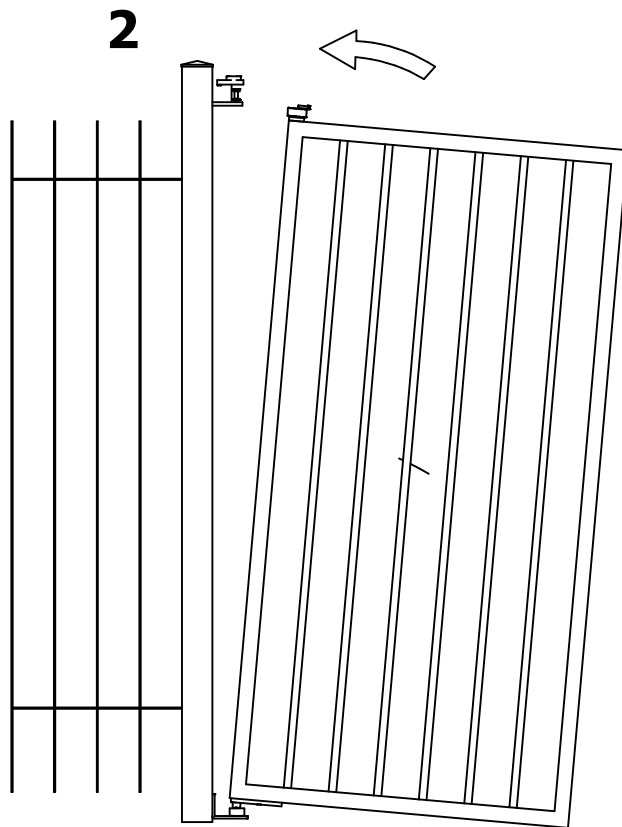


Non fourni  
Not supplied

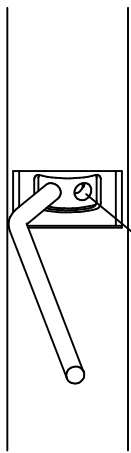
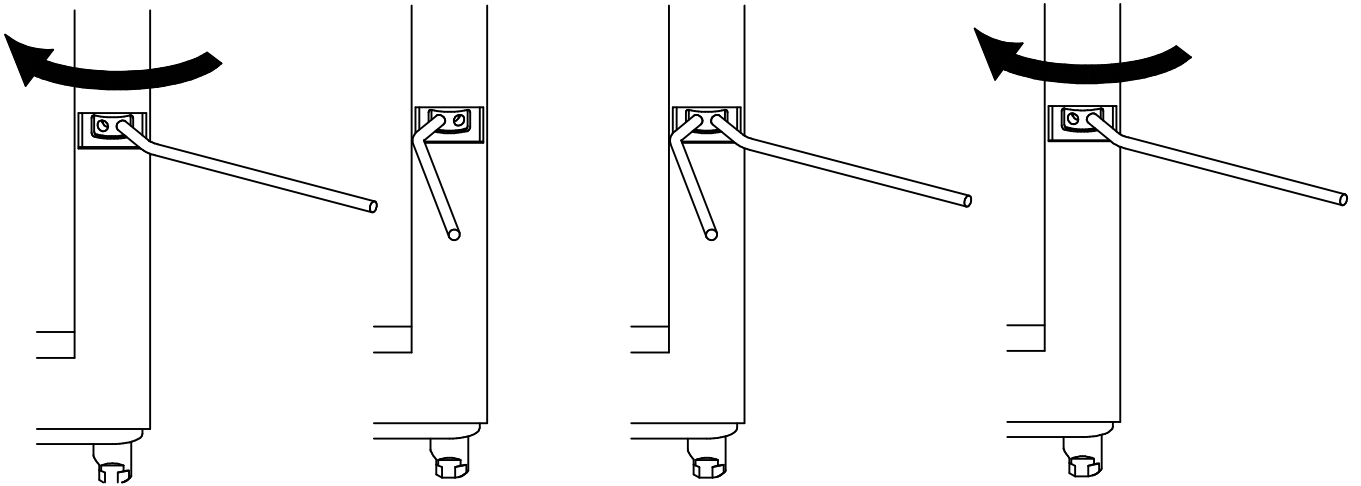


Ne pas souder !!!  
Ne pas exposer à la pluie !!!  
Do not weld !!!  
Do not expose to rain !!!

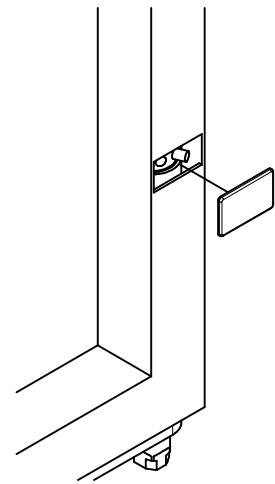
# Montage / assembly



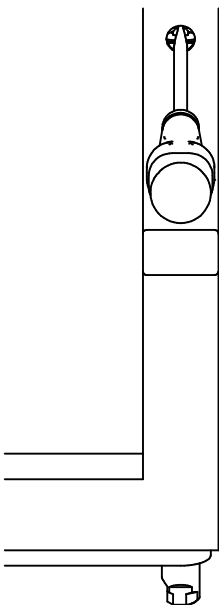
# Réglage du ressort / torsion spring adjustment



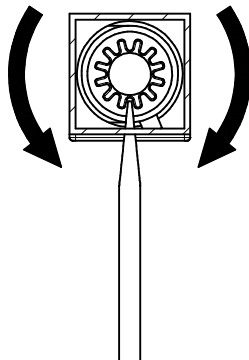
**Insérer la goupille dans le 9ème trou**  
**Insert the pin in the 9th hole**



# Réglage de la vitesse / speed gear adjustment



**Rapide**  
**Faster**



**Lent**  
**Slower**

