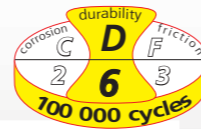


# System for wardrobe doors

## TUBEL®

**NEW**



See details of the standard EN 1527 p.4

CAPACITY/PANEL	30 KG (top mounting roller) 40 KG (side mounting roller)
TRACK	ALUMINIUM
MOVEMENT	STRAIGHT

Single or double pull-out system, particularly suitable for making wide cupboards.

- Smooth and silent movement thanks to ball bearing mounts
- The system can be cleverly adapted to panel thicknesses from 16 to 40 mm.
- Possibility of 3-panel mounting
- Optional door closer damper
- 2 types of rollers: top or side mounting of the panel

30 Kg (top mounting roller)  
40 KG (side mounting roller)



SETS		
Item Nr.	Description	
TUB40-194	Set including: - 1 double-track aluminium in length of 1.94 m - 1 gear TUB40-2 for 2 panels (side mounting) - screws and assembly instructions	5
TUB40-300	Ditto with double-track of 3.00 m length	5

ALUMINIUM SINGLE TRACKS		
30/194	Raw aluminium single track in length of 1.94 m pre-drilled for wall or ceiling mounting	8
30/300	Ditto in 3.00 m length	8

ALUMINIUM DOUBLE TRACKS		
40/194	Raw aluminium double track in length of 1.94 m préperçé pour fixation plafond	12
40/300	Ditto in 3.00 m length	12

GEARS		
TUB30-1	Gear for 1 panel - top mounting roller - including: - 2 top mounting rollers 0030 - 2 end stops with panel retention - 1 lower guide 1124 - screws and assembly instructions	10
TUB40-2	Gear for 2 panels - side mounting roller - including: - 2 side mounting rollers 0040-A - 2 side mounting rollers 0040-B - 4 end stops with panel retention - 1 lower guide 1124 - screws and assembly instructions	10
TUB40-3*	Gear for the 3rd panel - side mounting roller - including: - 2 side mounting rollers 0040-C - 1 positioner for the middle panel - 2 end stops with panel retention - 1 lower guide 1124 - screws and assembly instructions	10

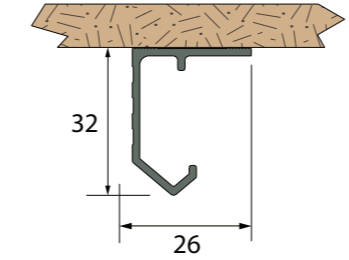
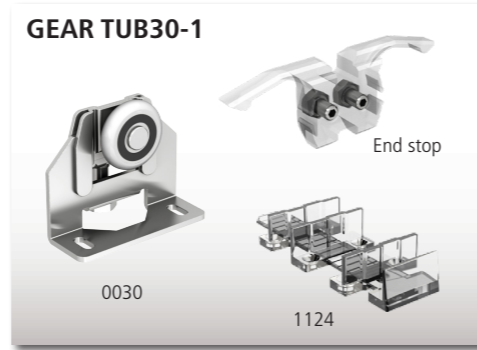
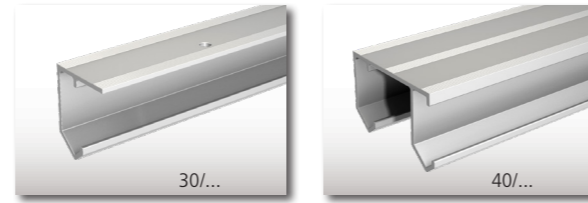
\*To be used in addition of the TUB40 sets for a 3<sup>rd</sup> panel.

ROLLERS		
0030	Top mounting roller for panels up to 30 Kg	10
0040-A	Side mounting roller for panels up to 40 Kg	10
0040-B	Side mounting roller for panels up to 40 Kg	10
0040-C*	Universal side mounting roller (A or B depending on the mounting) for panels up to 40 Kg	10

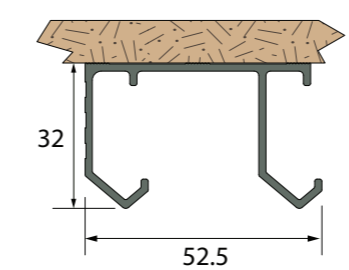
\*Roller not compatible with track 30 for wall mounting

ACCESSORIES		
1030	Set of 2 end stops with panel retainer, supplied with fixing key	
1124	Universal guide in transparent Polycarbonate (can be cut)	
66AFP20*	Damper closer system for gentle closing of doors	

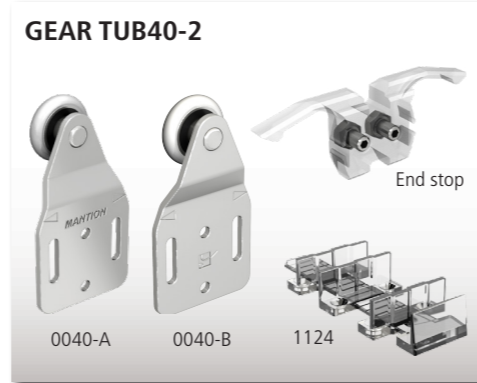
\*Damper closer not compatible with the roller 0030



Track 30 (1.94 - 3 m)



Track 40 (1.94 - 3 m)

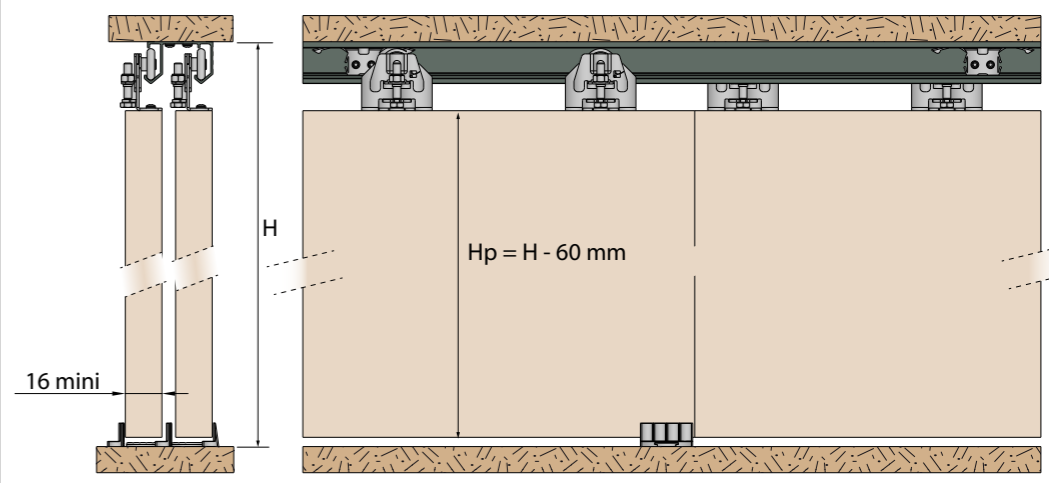


End stop with panel retainer (supplied with fixing key)



The damper automatically accompanies the panel to the closed position.

### TUB30 (top mounting roller)



### TUB40 (side mounting roller)

